



# 3 WAYS DIVERTER VALVES

## DF 3

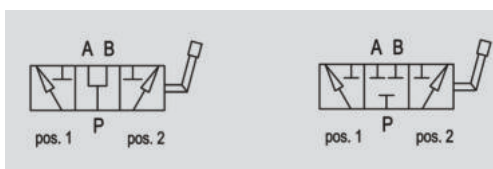
**Flow Upto 200 LPM**  
**Pressure 300 Bar**



### Description & Operation

3 ways diverter valves are used to divert the flow towards 2 different outlets.

Connect P to the pressure flow, A and B to the ports of the hydraulic circuit where flow has to be diverted. With lever in position 1 the flow is connected towards port A; with lever in position 2, the flow is connected towards port B. With lever in central position ports P, A and B are all connected (opened centre).



### Technical Data

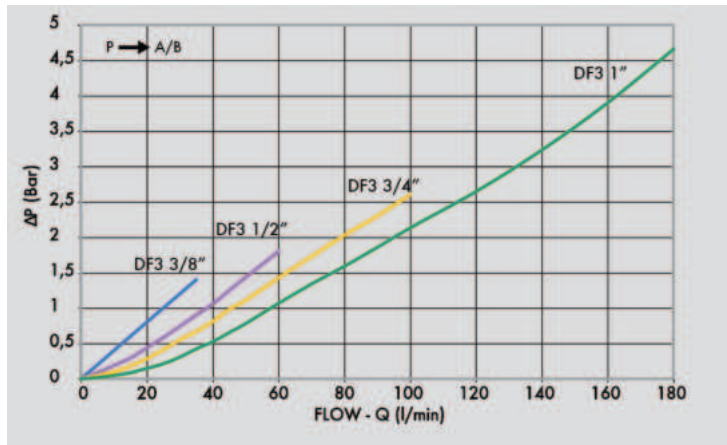
Maximum Flow	200 LPM
Maximum Operating Pressure	300 Bar
Body Material	Cast Iron
Internal parts	Hardened and Ground steel
External Component treatment	/
Oil Temperature	50 Deg. C
Fluids	Mineral based or synthetics with lubricating properties
Viscosity	30 cSt
Standard Sealing	NBR-Buna N
Filtration	20/18/15 ISO 4406 ( Max. Filtration admitted)
Orientation / Mounting	Inline
Weight	See Ordering details



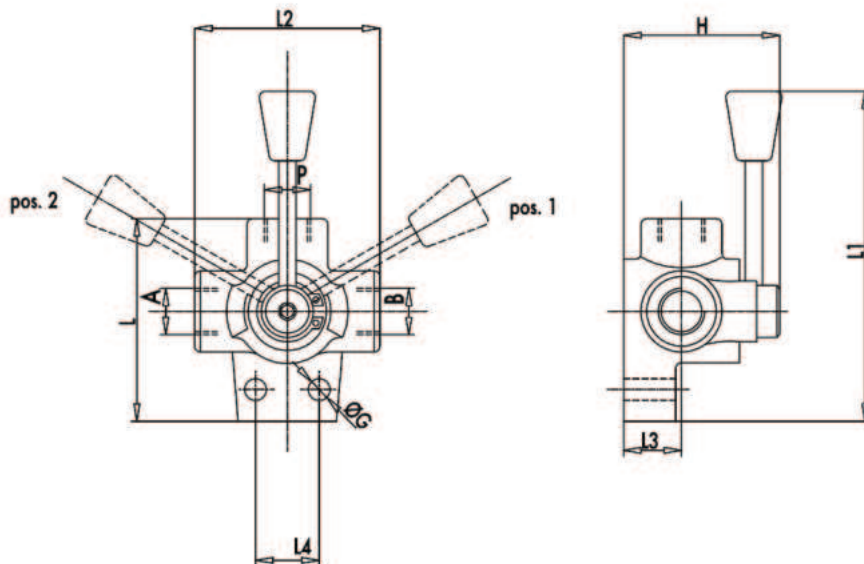
### Specifications

Type	Max.Flow	Max.Pressure
	LPM	Bar
DF 3 VIE 3/8"	60	300
DF 3 VIE 1/2"	90	250
DF 3 VIE 3/4"	120	220
DF 3 VIE 1"	200	220

 Performance Curve



 Dimensional Drawing



 Ordering Details

Code	Type	A-B	L	L1	L2	L3	L4	ØG	H	Weight
		P	mm	mm	mm	mm	mm	mm	mm	Kg
R-V0880	DF 3 VIE 3/8"	G 3/8"	77	169	73	13	24	8.5	62	0.890
R-V0890	DF 3 VIE 1/2"	G 1/2"	96	180	85	12	32	10.5	70	1.450
R-V0900	DF 3 VIE 3/4"	G 3/4"	100	180	90	14	32	10.5	80	1.820
R-V0910	DF 3 VIE 1"	G 1"	115	207	96	14	32	11	90	2.500

 On Request

- Closed center (CODE / CC)

DIVERTER VALVES