

CARTRIDGE RELIEF VALVE 20 LPM



VMPC

Flow Upto 20 LPM
Pressure 350 Bar

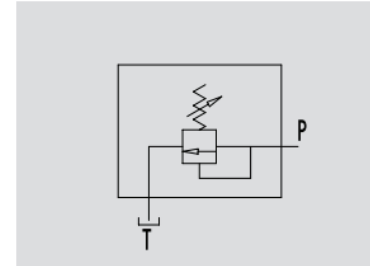


Description & Operation

The relief valve limits the maximum pressure in a circuit to the valve's setting.

When the circuit pressure reaches the setting, the valve opens and stops the circuit pressure going any higher.

Fit the valve in the appropriate cavity.



Hydraulic Symbol

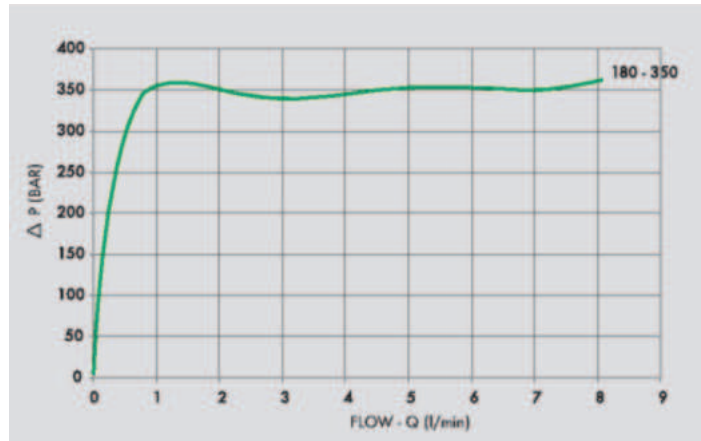
Technical Data

Maximum Flow	20 LPM
Maximum Pressure	350 Bar
Body Material	Steel
Internal parts	Hardened and Ground steel
External Component treatment	Zn/Fe - standard (96h) / Zn/Ni (720h)
Oil Temperature	50 Deg. C
Fluids	Mineral based or synthetics with lubricating properties
Viscosity	30 cSt
Standard Sealing	NBR-Buna N
Filtration	20/18/15 ISO 4406 (Max. Filtration admitted)
Orientation / Mounting	Inline
Weight	See Ordering details

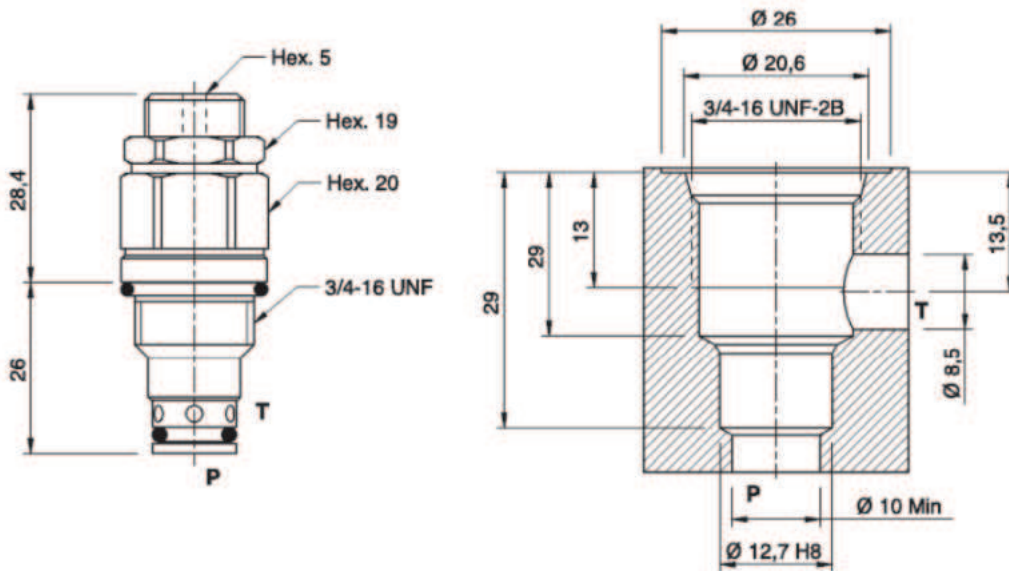
Specifications

Type	Max.Flow	Pressure Range
	LPM	Bar
VMP 1/4" L	20	10 - 180
VMP 3/8" L	20	180 - 350

 **Performance Curve**



 **Dimensional Drawing**



 **Ordering Details**

Code	Type	SAE	Weight
		UNF	Kg
R-VC0200/180	VMPC 20 10-180 BAR	3/4"-16	0.110
R-VC0200/350	VMPC 20 180-350 BAR	3/4"-16	0.110

 **Adjustment**

CODE/V	Handknob
CODE/PP	Arranged for sealing cap
CODE/P	Sealing cap

RELIEF VALVES