

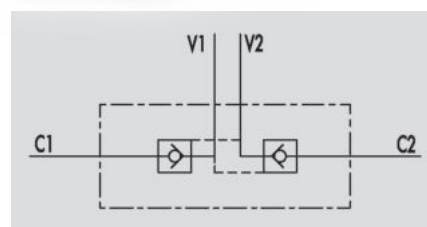
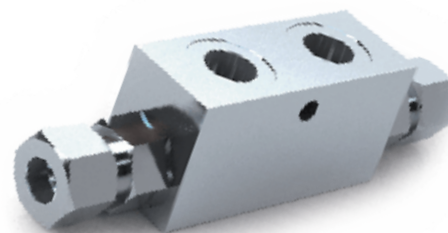


VBPDE 2 CC

Flow Upto 50 LPM
Pressure 350 Bar

Description & Operation

Pilot check valves are used to block the actuator in both directions. Flow is free in one direction and blocked in the reverse direction until pilot pressure is applied. They are easily assembled on a cylinder. We supply on request fittings kit for mounting on cylinders with a specific centre distance. Connect V1 and V2 to the pressure flow and C1 and C2 to the actuator with a banjo.



Hydraulic Symbol

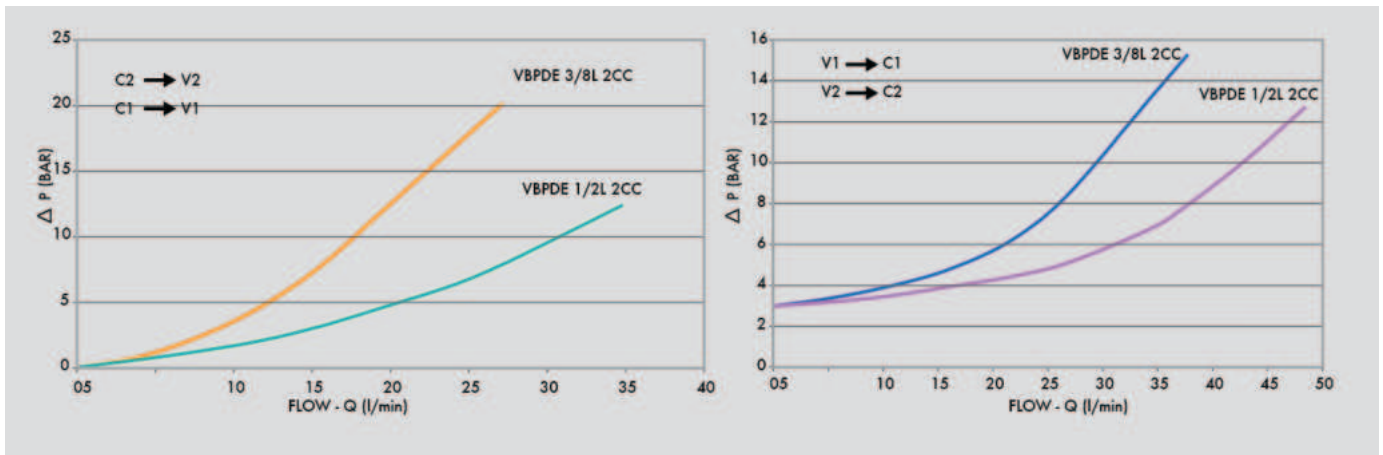
Technical Data

Maximum Flow	50 LPM
Maximum Pressure	350 Bar
Body Material	Steel
Internal parts	Hardened and Ground steel
External Component treatment	Zn/Fe - standard (96h) / Zn/Ni (720h)
Oil Temperature	50 Deg. C
Fluids	Mineral based or synthetics with lubricating properties
Viscosity	30 cSt
Standard Sealing	NBR-Buna N
Filtration	20/18/15 ISO 4406 (Max. Filtration admitted)
Orientation / Mounting	Inline
Weight	See Ordering details

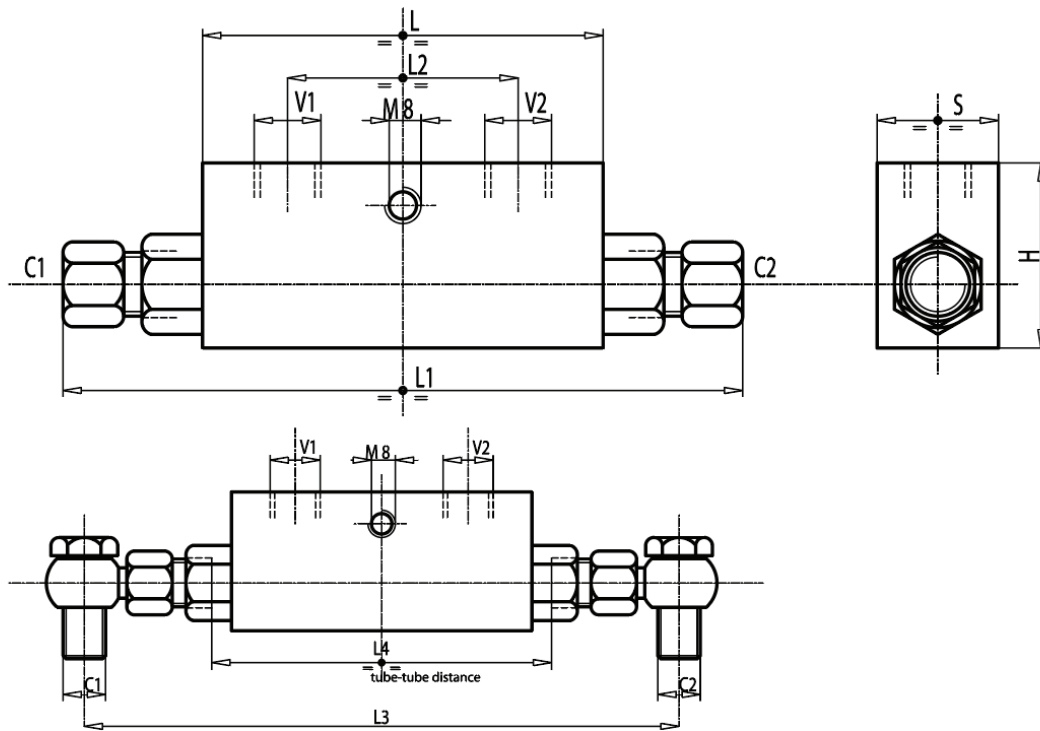
Specifications

Type	Pilot Ratio	Max.Flow	Max.Pressure	Cr.Pressure
		LPM	Bar	Bar
VBPDE 3/8" L 2 CC	1:5.5	35	350	3
VBPDE 1/2" L 2 CC	1:5	50	350	3

 Performance Curve



 Dimensional Drawing



 Ordering Details

Code	Type	V1-V2	C1-C2	L	L1	L2	L3	L4	H	S	Weight
		GAS	mm	mm	mm	mm	mm	mm	mm	mm	Kg
R-V0130	VBPDE 3/8" L 2 CC	G 3/8"	12L	80	150	38	180	96	40	30	0.776
R-V0135	VBPDE 1/2" L 2 CC	G 1/2"	15L	90	164	45	196	106	45	35	1.098

 On Request

- Without seal on pilot piston
- Without nut and olive
- 1 Bar spring
- 8 Bar spring