

DOUBLE PILOT OPERATED CHECK VALVES



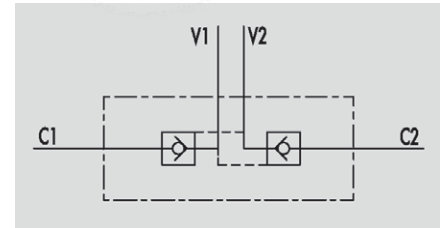
VBPDE

Flow Upto 100 LPM
Pressure 350 Bar



Description & Operation

Pilot check valves are used to block the cylinder in both directions. Flow is free in one direction and blocked in the reverse direction until pilot pressure is applied. Connect V1 and V2 to the pressure flow and C1 and C2 to the actuator.



Hydraulic Symbol

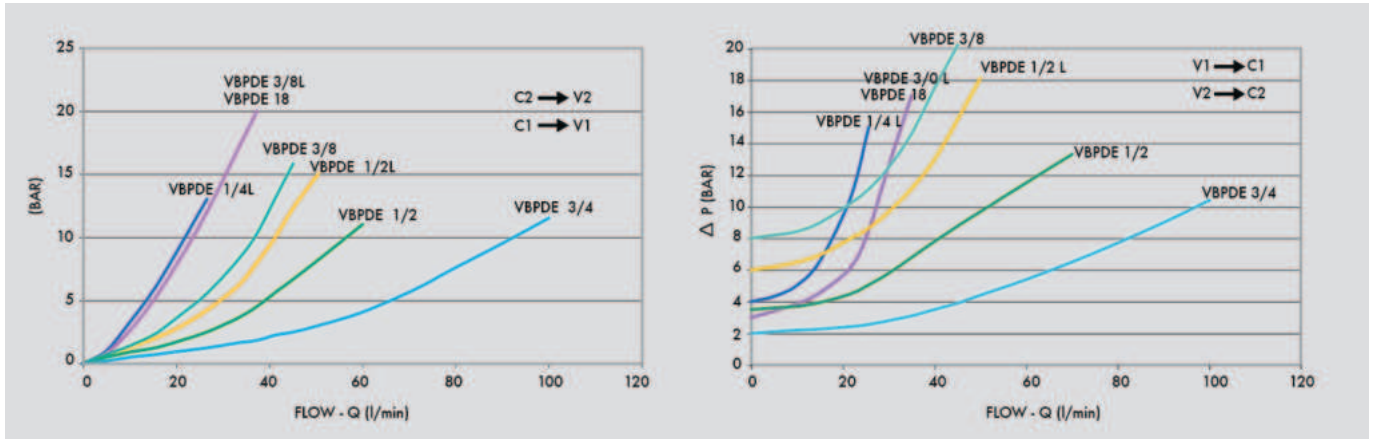
Technical Data

Maximum Flow	100 LPM
Maximum Pressure	350 Bar
Body Material	Steel
Internal parts	Hardened and Ground steel
External Component treatment	Zn/Fe - standard (96h) / Zn/Ni (720h)
Oil Temperature	50 Deg. C
Fluids	Mineral based or synthetics with lubricating properties
Viscosity	30 cSt
Standard Sealing	NBR-Buna N
Filtration	20/18/15 ISO 4406 (Max. Filtration admitted)
Orientation / Mounting	Inline
Weight	See Ordering details

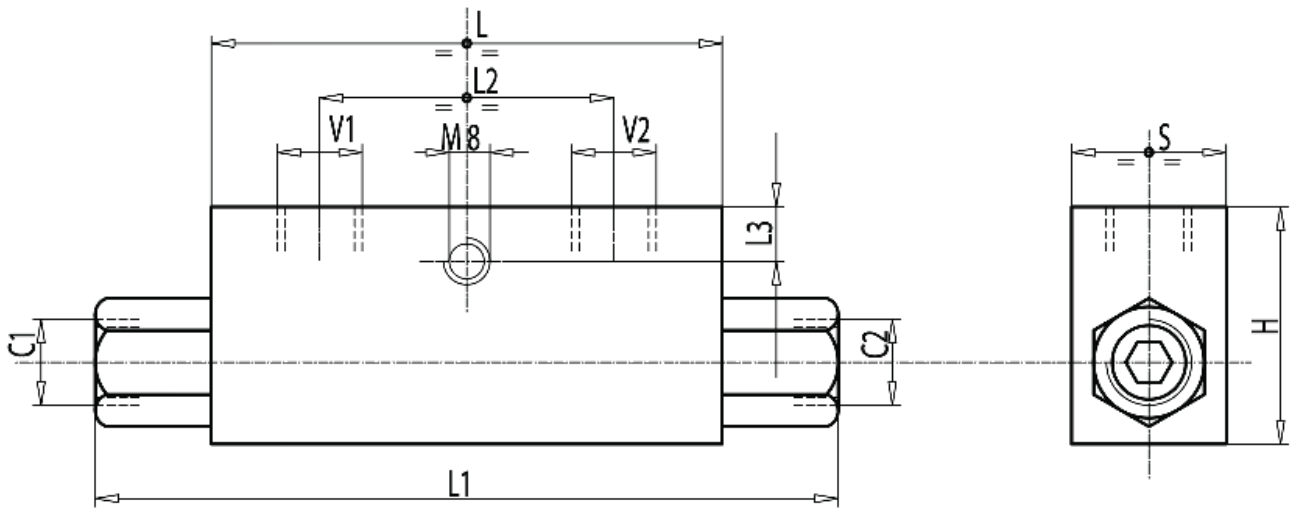
Specifications

Type	Pilot Ratio	Max.Flow	Max.Pressure	Cr.Pressure
		LPM	Bar	Bar
VBPDE 1/4" L	1:5.5	20	350	4
VBPDE 3/8" L	1:5.5	35	350	3
VBPDE 1/2" L	1:5	50	350	6
VBPDE 3/8" L	1:5	45	350	8
VBPDE 18 L	1:5.5	35	350	4
VBPDE 1/2" L	1:4	70	350	3.5
VBPDE 3/4" L	1:4	100	300	2

 Performance Curve



 Dimensional Drawing



 Ordering Details

Code	Type	V1-V2 C1-C2	L	L1	L2	L3	H	S	Weight
		GAS - MET	mm	mm	mm	mm	mm	mm	kg
R-V0010	VBPDE 1/4" L	G 1/4"	64	113	36	8	40	30	0.636
R-V0020	VBPDE 3/8" L	G 3/8"	80	128	38	8	40	30	0.736
R-V0030	VBPDE 1/2" L	G 1/2"	90	142	45	12.5	45	35	1.042
R-V0050	VBPDE 3/8" L	G 3/8"	90	156	45	12.5	45	35	1.174
R-V0061	VBPDE 18 L	M18 1.5	68	118	38	8	40	30	0.630
R-V0070	VBPDE 1/2" L	G 1/2"	80	144	40	18	60	35	1.284
R-V0040	VBPDE 3/4" L	G 3/4"	100	192	46	12	60	40	1.916

 On Request

- Without seal on pilot piston
- 1 Bar spring
- 8 Bar spring