



# Shuttle Valves

## SH.V0.G18 Valve Series

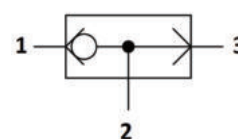
**GAS Cartridge - 350 Bar**

**Direct acting - Ball Type**



### Description & Operation

Shut-off valves for hydraulics systems, with two inlets and one outlet. Ball seat construction, automatic switching. The inlet with the higher pressure (port 1 or 3) is directly connected to tank (port 2), while the second inlet (port 3 or 1) is shut off.



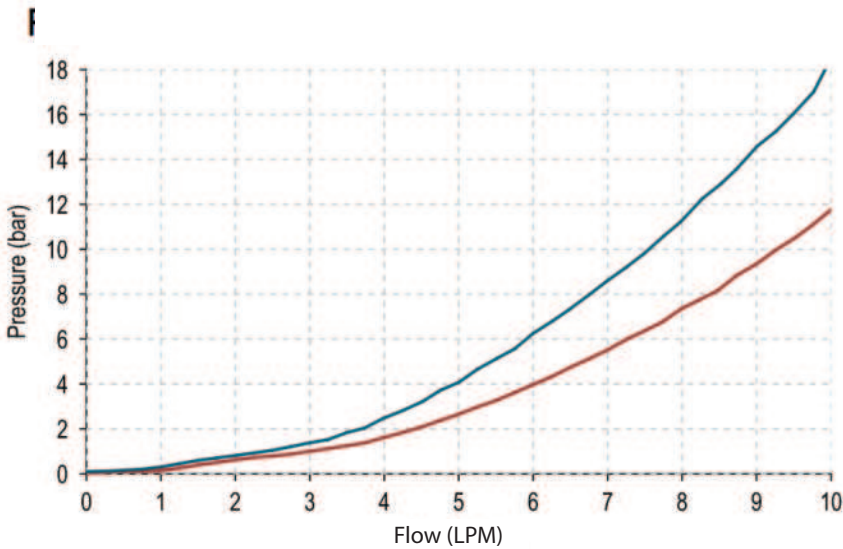
Hydraulic Symbol



### Technical Data

Maximum operating pressure	350 Bar
Maximum flow	10 LPM
Maximum internal leakage	0.25 cm <sup>3</sup> / min @ 350 Bar
External component treatment	Zn/Fe - standard (96h) Zn/Ni (720h)
O-ring Temperature Range	-30° C to 110° C (standard sealing NBR - BUNA-N)
Oil Temperature Range	-30° C to 110° C
Fluids	Mineral - based or synthetics with lubricating properties
Viscosities	7.4 to 420 cSt
Filtration	20/18/15 ISO 4406 (maximum filtration admitted)
Orientation	No restrictions
Installation torque	7-9 Nm (Hex. 4)
Oil testing condition	ISO VG 46 cSt
Seal kit code	SLKT.023
Weight	0.006 kg

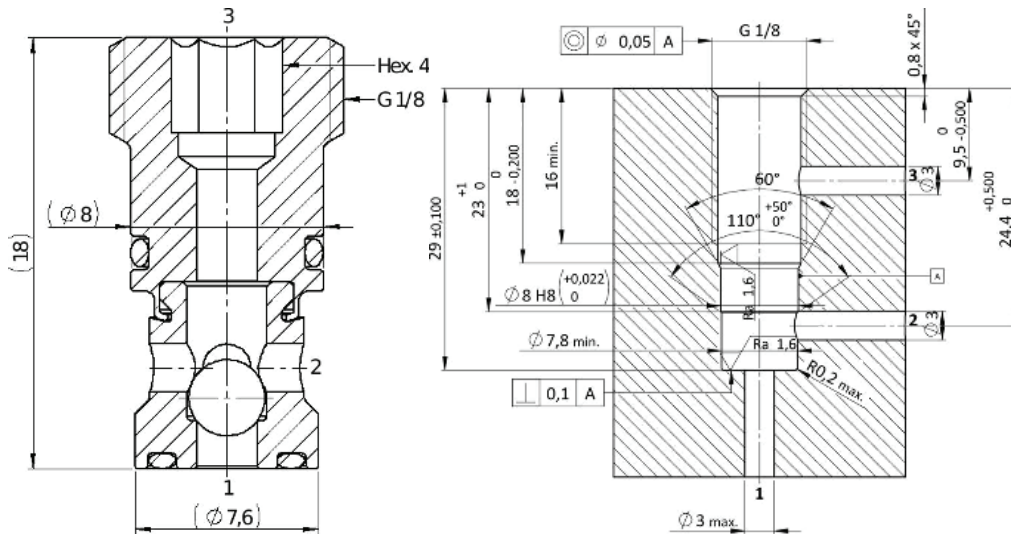
**Performance Curve**



NOTE:  
The performance chart illustrates flow handling capacity in max flow condition. p/Q curves are recorded at TOil = 40°C and 46 cSt.

**Dimensional Drawing**

**Cross Section and Cavity Details**



**Ordering Code**

