



## WE.E0.S08 Valve Series

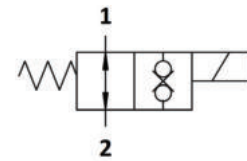
**SAE Cartridge – 250 Bar**

**NO Double Lock Direct Acting – Poppet Type**



### Description & Operation

Solenoid operated, 2-way 2-positions normally open, direct acting poppet type, bi-directional blocking, screw-in cartridge valve. Special design for low leakage in load holding applications. When the coil is de-energized, the WEE0.S08 allows flow in both directions. Once the coil is energized, the valve closes blocking flow from 1 to 2 and from 2 to 1. The rigid design using a 1-piece body contributes to minimize the effect of eccentricities in cavity and provides great reliability. Low pressure drop thanks to optimized flow path



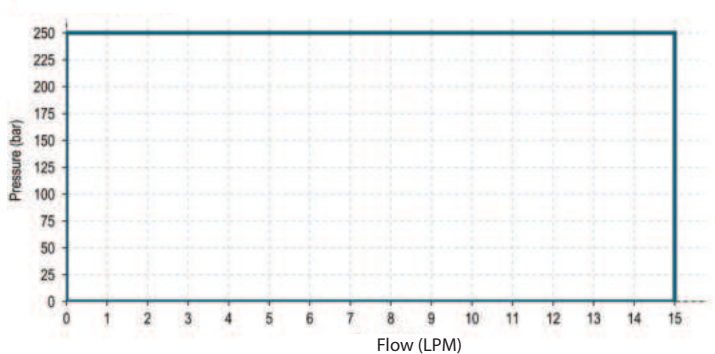
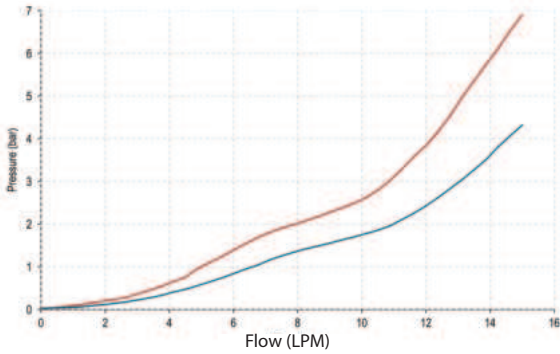
Hydraulic Symbol



### Technical Data

Maximum operating pressure	250 Bar
Maximum flow	15 LPM
Maximum internal leakage	0.25 cm <sup>3</sup> / min @ 250 Bar
External component treatment	Zn/Fe - standard (96h) Zn/Ni (720h)
Switch ON Time	35 ms
Switch OFF Time	80 ms
O-ring Temperature Range	-30° C to 110° C (standard sealing NBR - BUNA-N)
Oil Temperature Range	-30 C to 110 C
Fluids	Mineral - based or synthetics with lubricating properties
Viscosities	7.4 to 420 cSt
Minimum pull-in voltage	85% of nominal
Filtration	20/18/15 ISO 4406 (maximum filtration admitted)
Orientation	No restrictions
Installation torque	40 - 45 Nm (Hex. 24)
Oil testing condition	ISO VG 46 cSt
Seal kit code	SLKT.003 & SLKT.027 (coil)
Coil	22W
Weight	0.125 kg

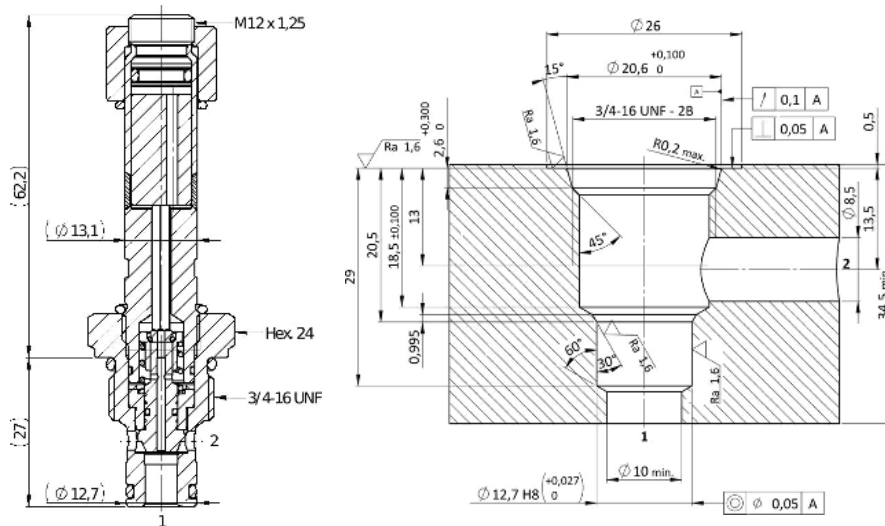
**Performance Curve**



**Note:** The performance chart illustrates flow handling capacity in both directions (1 to 2 and 2 to 1). p/Q curves are recorded at TOil = 40°C and 46 cSt

**Dimensional Drawing**

**Cross Section and Cavity Details**



**Ordering Code**

W E • E O • S O 8 • 0 \* • \* 0 0

valve basic code

**Cavity**  
**S08** = 3/4- 16 UNF with  $\varnothing 12.7$  nose size  
 Other available optoins:  
**S09** = 3/4- 16 UNF with  $\varnothing 15.87$  nose sizes

**Marking**  
**0** = standard factory marking. customized marking can be done upon request

**Spring range**

model Code	Type of Override
0	No Override
2	Push & Twist
3	Push pin
4	Push Knob
8	Screw

**Filtration**

model Code	Type of Filter
N	No Filter
F	Standard filter (Mesh size 280 $\mu$ m)

**Note**=Customized filters can be done upon request

**NOTE:** All Solenoid cartridge valves listed in the present catalogue are designed to work with D.C. power supply. To work with A.C. power supply, a RAC coil and connector with rectifier must be used. For any additional information, please contact your Sales contact representative.

SOLENOID VALVES