



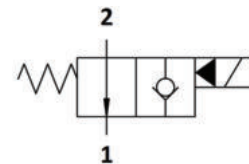
WE.20.S10 Valve Series

SAE Cartridge – 350 Bar

NO Single Lock Pilot Operated – Poppet Type

Description & Operation

Solenoid operated, 2-way 2-positions, normally open, piloted poppet type, screw-in cartridge valve. Typically used as a blocking or load holding device for high pressure circuits. When the coil is de-energized, the WE.J0. S08 allows flow from 2 to 1, while flow from 1 to 2 is severely restricted. When the coil is energized the valve closes, blocking flow from 2 to 1. In this mode, flow from 1 to 2 is allowed once the pressure overcomes the force of the solenoid. The rigid design using a 1-piece body contributes to minimize the effect of eccentricities in cavity and provides great reliability. Low pressure drop thanks to optimized flow path.



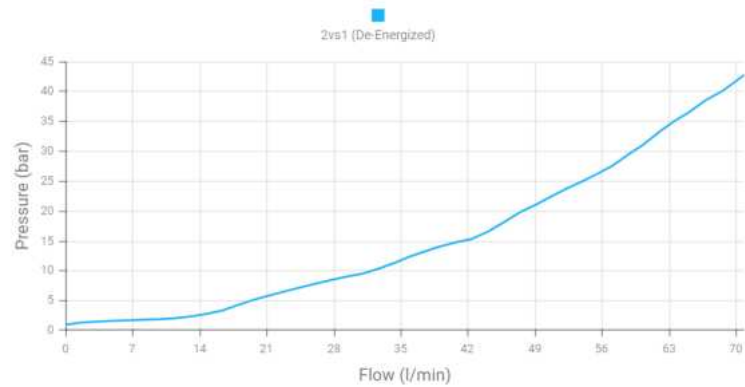
Hydraulic Symbol

Technical Data

Maximum operating pressure	350 Bar
Maximum flow	40 LPM
Maximum internal leakage	0.25 cm ³ / min @ 350 bar
External component treatment	Zn/Fe - standard (96h) Zn/Ni (720h)
Switch ON Time	100 ms
Switch OFF Time	50 ms
O-ring Temperature Range	-30° C to 110° C (standard sealing NBR - BUNA-N)
Oil Temperature Range	-30 C to 110 C
Fluids	Mineral - based or synthetics with lubricating properties
Viscosities	7.4 to 420 cSt
Minimum pull-in voltage	85% of nominal
Filtration	20/18/15 ISO 4406 (maximum filtration admitted)
Orientation	No restrictions
Installation torque	40 - 45 Nm (Hex. 24)
Oil testing condition	ISO VG 46 cSt
Seal kit code	SLKT.030 & SLKT.027 (coil)
Coil	18 W
Weight	0.124 kg

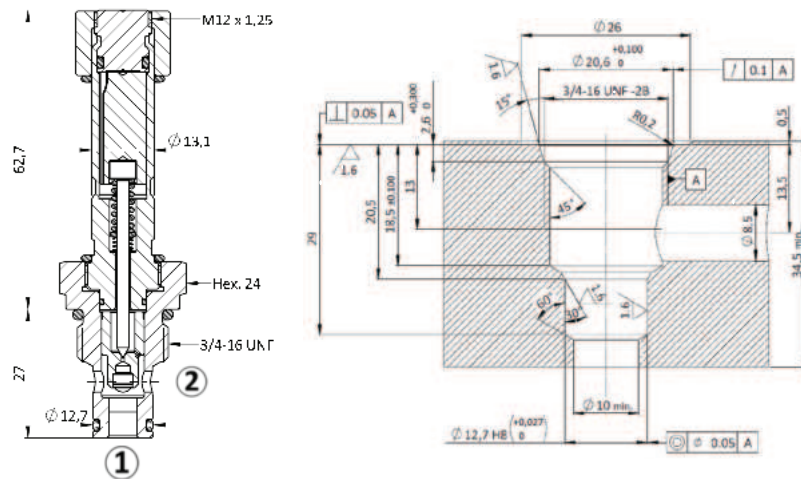
 Performance Curve

SV20.S08



 Dimensional Drawing

Cross Section and Cavity Details



 Ordering Code

W **E** • **2** **0** • **S** **0** **8** • **0** ***** • ***** **0** **0**

valve basic code

Cavity
S08 = 3/4- 16 UNF with \varnothing 12.7 nose size
 Other available options:
S09 = 3/4- 16 UNF with \varnothing 15.87 nose sizes
M20 = M20 x 1.5 with \varnothing 15 nose size

Marking
0 = standard factory marking. customized marking can be done upon request

Spring range	
model Code	Type of Override
0	No Override
2	Push & Twist
3	Push pin
4	Push Knob
8	Screw

Filtration	
model Code	Type of Filter
N	No Filter
F	Standard filter (Mesh size 280 μ m)

Note=Customized filters can be done upon request

NOTE: All Solenoid cartridge valves listed in the present catalogue are designed to work with D.C. power supply. To work with A.C. power supply, a RAC coil and connector with rectifier must be used. For any additional information, please contact your Sales contact representative.