



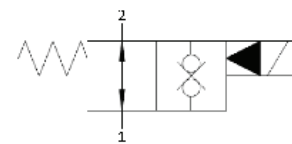
WE.Y0.S08 Valve Series

SAE Cartridge – 350 Bar

No Double Lock Pilot Operated – Poppet Type

Description & Operation

Solenoid operated, 2-way 2-positions, normally closed, piloted poppet type, bi-directional blocking, screw-in cartridge valve. Special design for low leakage in load holding applications. Typically used as a blocking or load holding device for high pressure circuits. When the coil is de-energized, the valve's poppet opens and allows free flow from 1 to 2 and from 2 to 1. Once the coil is energized, the SVY0.S08 blocks flow in both directions. The rigid design using a 1-piece body contributes to minimize the effect of eccentricities in cavity and provides great reliability. Low pressure drop thanks to optimized flow path

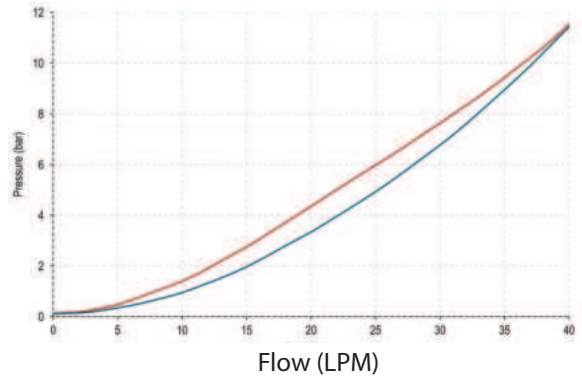
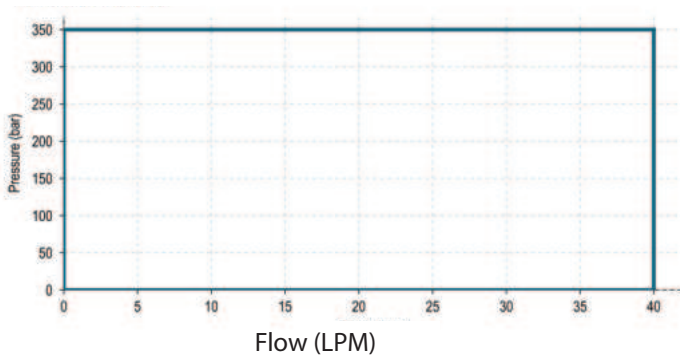


Hydraulic Symbol

Technical Data

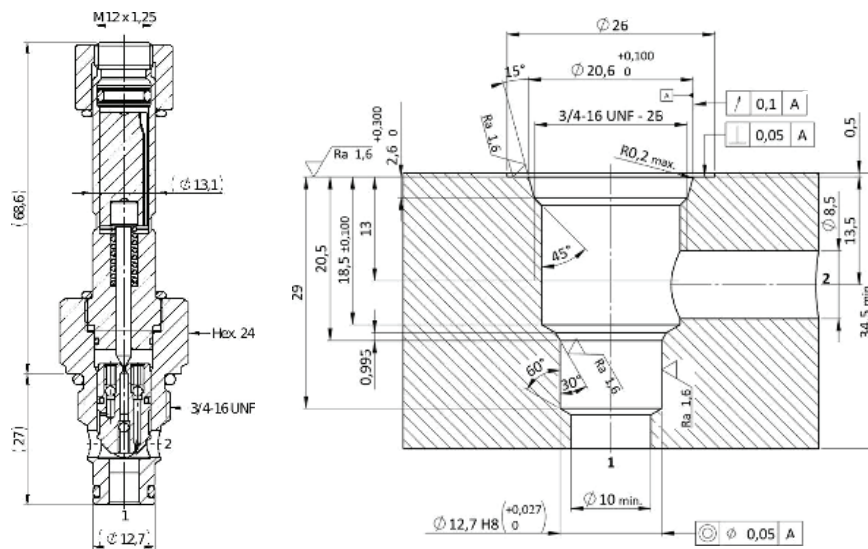
Maximum operating pressure	350 Bar
Maximum flow	40 LPM
Maximum internal leakage	0.25 cm ³ / min @350 Bar
External component treatment	Zn/Fe - standard (96h) Zn/Ni (720h)
Switch ON Time	100 ms
Switch OFF Time	50 ms
O-ring Temperature Range	-30° C to 110° C (standard sealing NBR - BUNA-N)
Oil Temperature Range	-30 C to 110 C
Fluids	Mineral - based or synthetics with lubricating properties
Viscosities	7.4 to 420 cSt
Minimum pull-in voltage	85% of nominal
Filtration	20/18/15 ISO 4406 (maximum filtration admitted)
Orientation	No restrictions
Installation torque	40 - 45 Nm (Hex. 24)
Oil testing condition	ISO VG 46 cSt
Seal kit code	SLKT.030 & SLKT.027 (coil)
Coil	18W
Weight	0.148 kg

Performance Curve



Dimensional Drawing

Cross Section and Cavity Details



Ordering Code

W E • Y O • S O 8 • 0 * • * 0 0

Cavity
S08 = 3/4-16 UNF
 with $\varnothing 12.7$ nose size
M20 = M20 x 1.5 with
 $\varnothing 15$ nose size.

Marking
0 = standard factory
 marking. customized
 marking can be done
 upon request

Manual Override

Model Code	Type of Override
0	No Override
2	Push and Twist
3	Push pin
6	Pull And Hold
8	Screw

Manual Override

Model Code	Type of Override
N	No Filter
1	standard filter (mesh size 280 m 4m)

NOTE: All Solenoid cartridge valves listed in the present catalogue are designed to work with D.C. power supply. To work with A.C. power supply, a RAC coil and connector with rectifier must be used. For any additional information, please contact your Sales contact representative.

SOLENOID VALVES