

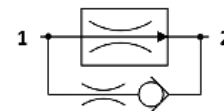


FR.D0.S08 Valve Series

Hybrid SAE08 Cartridge - 250 Bar Direct acting - Pressure Compensated

Description & Operation

A direct acting, drop-in insert type, 2-way pressure compensated flow control valve. The flow rate of this valve in the 1 to 2 flow path is largely independent of the system pressure and is determined by the dimension of a calibrated orifice. The valve cannot be adjusted for variable flow output. Free flow in the 2 to 1 path is allowed and not pressure compensated.



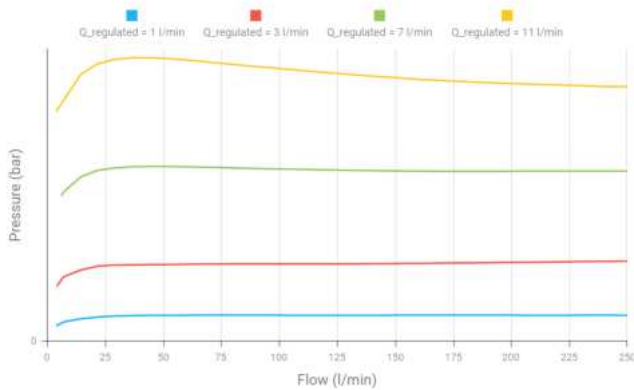
Hydraulic Symbol

Technical Data

Maximum operating pressure	250 Bar (2 to 1 max working pressure 210Bar)
Maximum flow	12 LPM (in flow control function)
External component treatment	Oxide burnished
O-ring Temperature Range	-30° C to 110° C (standard sealing NBR - BUNA-N)
Oil Temperature Range	-30° C to 110° C
Fluids	Mineral - based or synthetics with lubricating properties
Viscosities	7.4 to 420 cSt
Filtration	20/18/15 ISO 4406 (maximum filtration admitted)
Orientation	No restrictions
Oil testing condition	ISO VG 46 cSt
Seal kit code	SLKT.060
Weight	0.013 kg

 **Performance Curve**

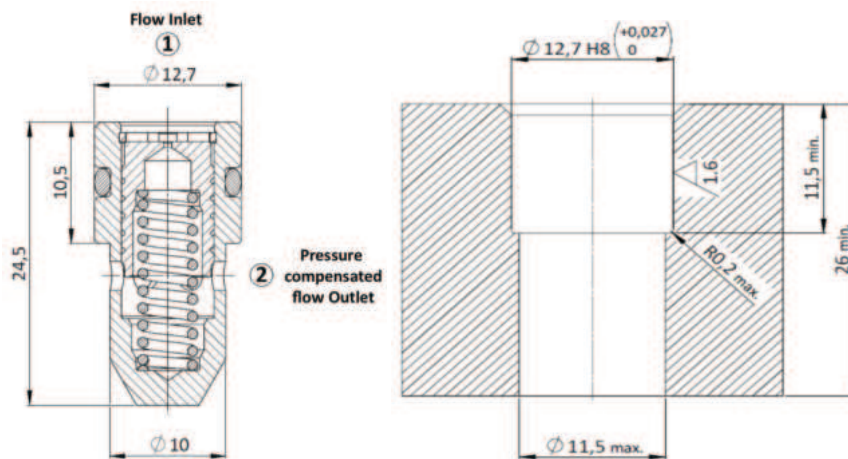
FRD0.S08_1vs2 (Flow control function)



Note: The performance chart illustrates flow handling capacity in the pressure compensated mode for a few significant flow settings. p/Q curves are recorded at T_{oil} = 40°C and 46 cSt.

 **Dimensional Drawing**

Cross Section and Cavity Details



 **Ordering Code**

F R • D O • S O 8 • 0 * • * * *

valve basic code

Cavity
S08=∅ 12.7 mm nose sizes

Flow Settings
0=2 - 12 l/min
1=0.5 - 1.8l/min

Fixed flow setting (l/min with 1 decimal)

FRCO		FRC1	
2 LPM	020	0.6 LPM	006
3 LPM	030	0.8 LPM	008
4 LPM	040	1.0 LPM	010
5 LPM	050	1.2 LPM	012
6 LPM	060	1.4 LPM	014
7 LPM	070	1.6 LPM	016
8 LPM	080	1.8 LPM	018
9 LPM	090		
10 LPM	100		
11 LPM	110		
12 LPM	120		

Note = customized fixed flow can be provided upon request

Steel wire option
W = if we requested leave blank if not.