

SINGLE PILOT OPERATED CHECK VALVE



VBPSE

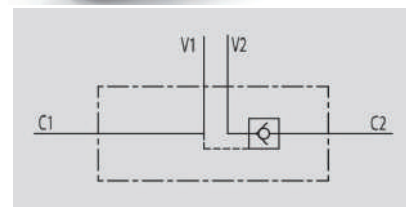
Flow Upto 100 LPM
Pressure 350 Bar



Description & Operation

These valves are used to block the cylinder in one direction. The flow is free in one direction and blocked in the reverse direction until pilot pressure is applied.

Connect V1 and V2 to the pressure flow, C1 to the free flow side of the actuator and C2 to the actuator's side you want the flow to be blocked.



Hydraulic Symbol



Technical Data

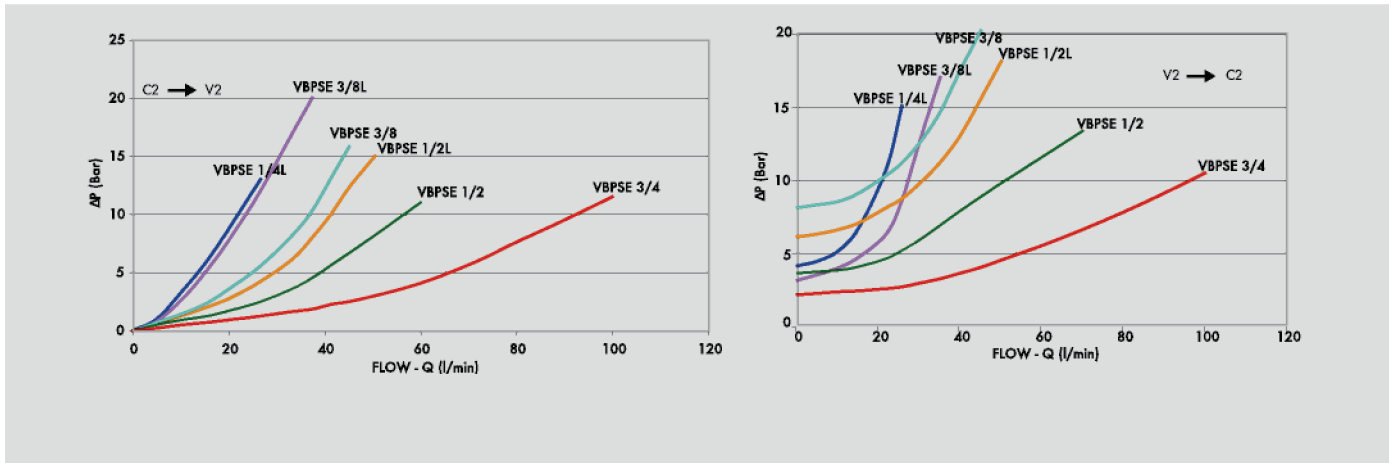
Maximum Flow	100 LPM
Maximum Pressure	350 Bar
Body Material	Steel
Internal parts	Hardened and Ground steel
External Component treatment	Zn/Fe - standard (96h) / Zn/Ni (720h)
Oil Temperature	50 Deg. C
Fluids	Mineral based or synthetics with lubricating properties
Viscosity	30 cSt
Standard Sealing	NBR-Buna N
Filtration	20/18/15 ISO 4406 (Max. Filtration admitted)
Orientation / Mounting	Inline
Weight	See Ordering details



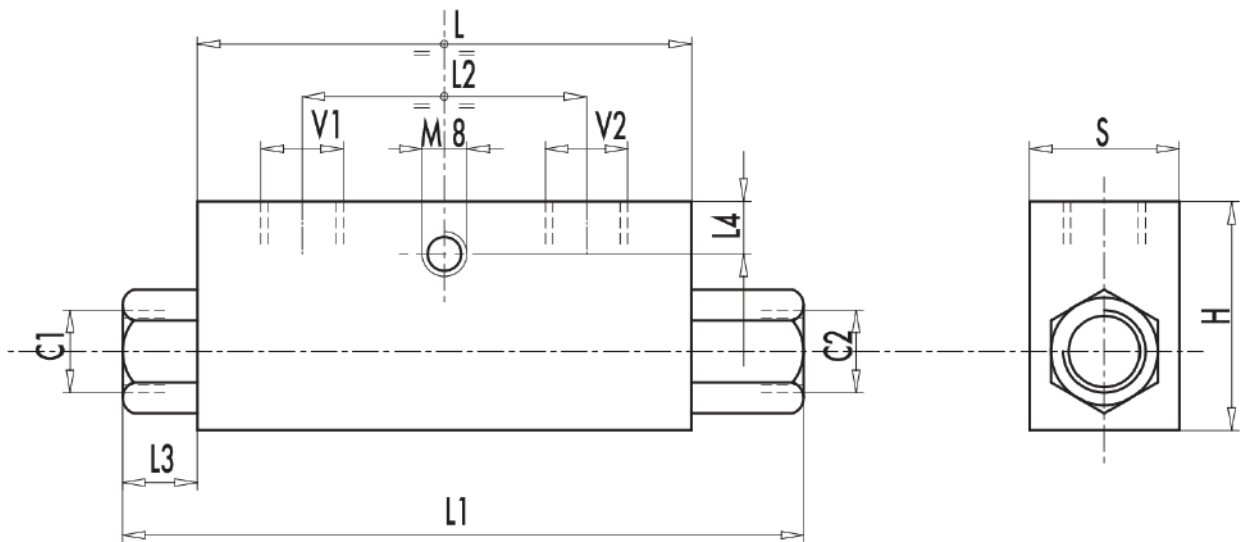
Specifications

Type	Pilot Ratio	Max.Flow	Max.Pressure	Cr.Pressure
		LPM	Bar	Bar
VBPSE 1/4" L 4 VIE	1:5.5	20	350	4
VBPSE 3/8" L 4 VIE	1:5.5	35	350	3
VBPSE 1/2" L 4 VIE	1:5	50	350	6
VBPSE 3/8" 4 VIE	1:5	45	350	8
VBPSE 1/2" 4 VIE	1:4	70	350	3.5
VBPSE 3/4" 4 VIE	1:4	100	350	2

Performance Curve



Dimensional Drawing



Ordering Details

Code	Type	V1-V2 C1-C2	L	L1	L2	L3	L4	H	S	Weight
		GAS	mm	mm	mm	mm	mm	mm	mm	Kg
R-V0220	VBPSE 1/4" L 4 VIE	G 1/4"	64	106.5	36	18.5	8	40	30	0.612
R-V0230	VBPSE 3/8" L 4 VIE	G 3/8"	80	120	38	16	8	40	30	0.706
R-V0240	VBPSE 1/2" L 4 VIE	G 1/2"	90	133	45	17	12.5	45	35	0.994
R-V0250	VBPSE 3/8" 4 VIE	G 3/8"	90	148	45	25	12.5	45	35	1.130
R-V0260	VBPSE 1/2" 4 VIE	G 1/2"	80	134	40	23	18	60	35	1.214
R-V0245	VBPSE 3/4" 4 VIE	G 3/4"	100	182	46	36	12	60	40	1.792

On Request

- Without seal on pilot piston
- 1 Bar spring
- 8 Bar spring

SINGLE PILOT CHECK VALVES