



S.Z0.S10

Hybrid SAE Cartridge - 420 Bar

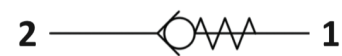
Direct acting - Poppet type



Description & Operation

A screw-in, cartridge style, direct acting, poppet type check valve. Main use is as a blocking or load-holding device. The

S.Z0.S10 allows flow passage from port 2 to 1: the cartridge has a fully guided check which is spring-biased closed until sufficient pressure is applied at port 2 to open to 1. The flow is blocked in the opposite direction (1 to 2).



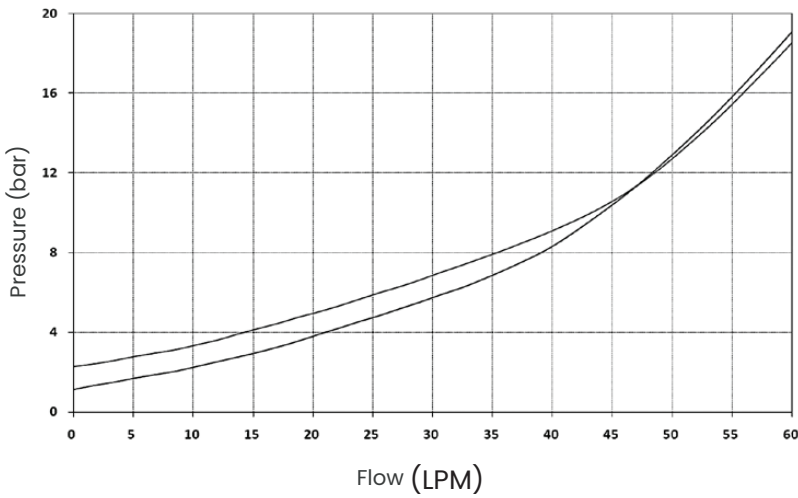
Hydraulic Symbol



Technical Data

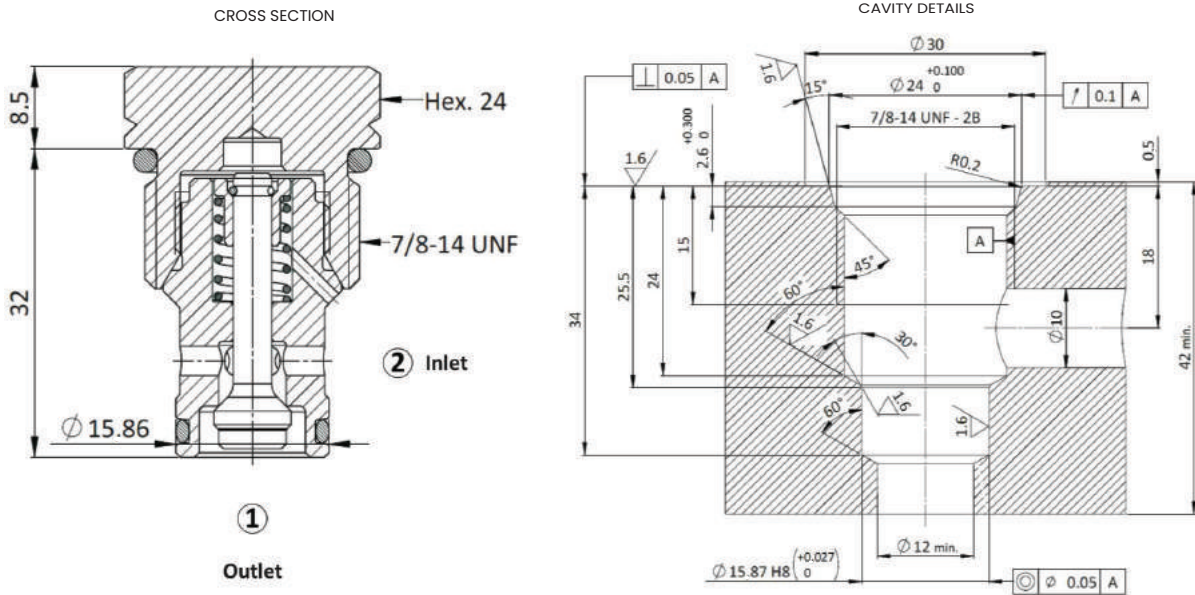
Maximum operating pressure	420 Bar
Maximum flow	60 LMP
Maximum Internal Leakage	0,10 cm ³ / min @ 10 Bar 0,10 cm ³ / min @ 420 Bar
External component treatment	Zn/Fe - standard (96h) Zn/Ni (720h)
O-ring Temperature Range	-30° C to 110° C (standard sealing NBR - BUNA-N)
Oil Temperature Range	-30° C to 110° C
Fluids	Mineral - based or synthetics with lubricating properties
Viscosities	7.4 to 420 cSt
Filtration	20/18/15 ISO 4406 (maximum filtration admitted)
Orientation	No restrictions
Installation torque	55-65 Nm
Oil testing condition	ISO VG 46 cSt
Seal kit code	SLKT.032
Weight	0,090 kg

Performance Curve



Note:
The performance chart illustrates flow handling capacity for each spring bias option. p/Q curves are recorded at ToI = 40°C and 46 cSt

Dimensional Drawing



Ordering Code

S • **Z** **0** • **S** **1** **0** • **0** * • **0** **0** **0**

Valve Basic Code Cavity S10 = 7/8 - 14 UNF with ϕ 15.86 nose size Marking 0 = standard factory marking, customized marking can be done upon request 000 = standard configuration

Bias Spring Option

Spring Model Code	Cracking Pressure (Bar)
L	0.5
Y	1.0
N	2.0