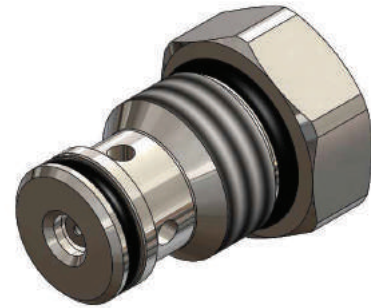




S.S4.S10

Hybrid SAE Cartridge - 350 Bar Direct acting - Poppet type



Description & Operation

A screw-in, cartridge style, direct acting, poppet type check valve. The S.S4.S10 allows flow passage from port 1 to 2: the cartridge has a fully guided check which is spring-biased closed until sufficient pressure is applied at port 1 to open to 2. The flow is blocked in the opposite direction (2 to 1).



Hydraulic Symbol



Technical Data

Maximum operating pressure	350 Bar
Maximum flow	30 LPM
Maximum internal leakage	0.10 cm ³ / min @ 10 bar 0.10 cm ³ / min @ 350 bar
Cracking Pressure	See table below
External component treatment	Zn/Fe - standard (96h) Zn/Ni (720h)
O-ring Temperature Range	-30° C to 110° C (standard sealing NBR - BUNA-N)
Oil Temperature Range	-30° C to 110° C
Fluids	Mineral - based or synthetics with lubricating properties
Viscosities	7.4 to 420 cSt
Filtration	20/18/15 ISO 4406 (maximum filtration admitted)
Orientation	No restrictions
Installation torque	80-85Nm
Oil testing condition	ISO VG 46 cSt
Seal kit code	SLKT.033
Weight	0.110 kg

