



Check Valves

S.D0.G38 Valve Series

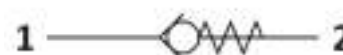
GAS Insert - 350 Bar

Direct acting - Poppet type



Description & Operation

A screw-in, direct acting, poppet type in-line check valve. Main use is as a blocking or load-holding device. The S.D0.G38 allows flow passage from port 1 to 2: the cartridge has a fully guided check which is spring-biased closed until sufficient pressure is applied at port 1 to open to 2. The flow is blocked in the opposite direction (2 to 1).



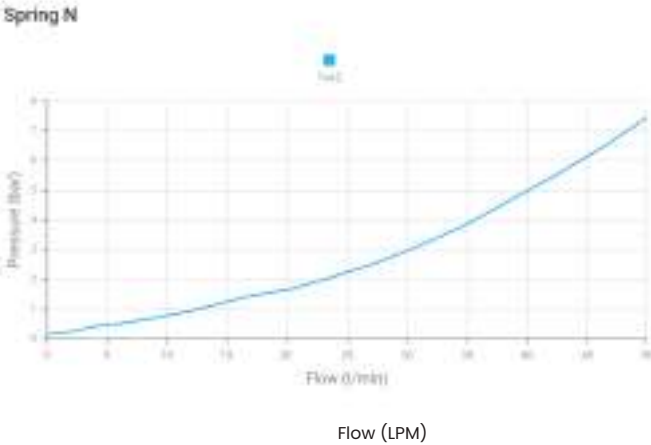
Hydraulic Symbol



Technical Data

Maximum operating pressure	350 Bar
Maximum flow	50 LPM
Maximum internal leakage	0.1 cm ³ / min @ 10 Bar 0.1 cm ³ / min @ 350 Bar
External component treatment	Zn/Fe - standard (96h) Zn/Ni (720h)
O-ring Temperature Range	-30° C to 110° C (standard sealing NBR - BUNA-N)
Oil Temperature Range	-30° C to 110° C
Fluids	Mineral - based or synthetics with lubricating properties
Viscosities	7.4 to 420 cSt
Filtration	20/18/15 ISO 4406 (maximum filtration admitted)
Orientation	No restrictions
Installation Toll	IK.002
Installation torque	30 Nm
Oil testing condition	ISO VG 46 cSt
Seal kit code	SLKT.017
Weight	0.011 kg

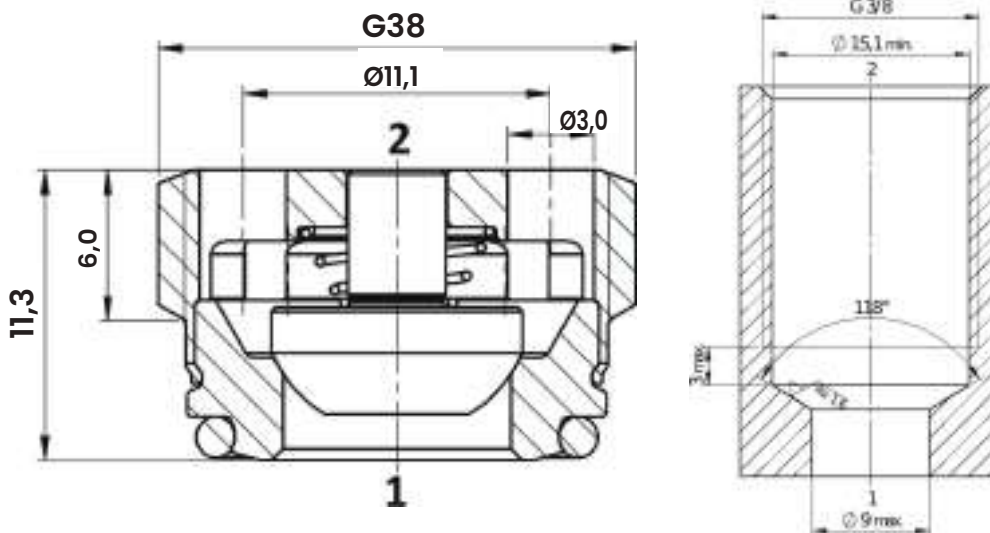
 Performance Curve



Note:
The performance chart illustrates flow handling capacity. p/Q curves are recorded at TOil = 40°C and 46 cSt.

 Dimensional Drawing

Cross Section and Cavity Details



 Ordering Code

S • D 0 • G 3 8 • 0 * • 0 0 0

valve basic code

Cavity
G38 = METRIC G38 x 1

Marking
0 = standard factory marking. customized marking can be done upon request

Bias Spring Options

Spring Model Code	Cracking Pressure (Bar)
N	0.5

000= standard configuration