



# Check Valves

## S.D0.G14 Valve Series

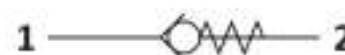
**GAS Insert - 350 Bar**

**Direct acting - Poppet type**



### Description & Operation

A screw-in, direct acting, poppet type in-line check valve. Main use is as a blocking or load-holding device. The S.D0.G14 allows flow passage from port 1 to 2: the cartridge has a fully guided check which is spring-biased closed until sufficient pressure is applied at port 1 to open to 2. The flow is blocked in the opposite direction (2 to 1).



Hydraulic Symbol

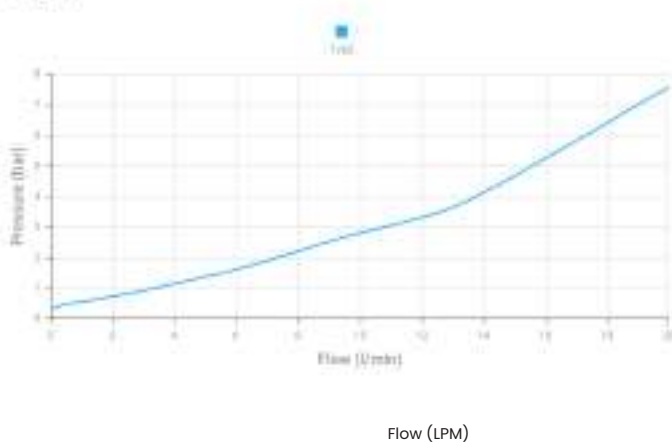


### Technical Data

Maximum operating pressure	350 Bar
Maximum flow	20 LPM
Maximum internal leakage	0.1 cm <sup>3</sup> / min @ 10 Bar 0.1 cm <sup>3</sup> / min @ 350 Bar
External component treatment	Zn/Fe - standard (96h) Zn/Ni (720h)
O-ring Temperature Range	-30° C to 110° C (standard sealing NBR - BUNA-N)
Oil Temperature Range	-30° C to 110° C
Fluids	Mineral - based or synthetics with lubricating properties
Viscosities	7.4 to 420 cSt
Filtration	20/18/15 ISO 4406 (maximum filtration admitted)
Orientation	No restrictions
Installation Toll	IK.001
Installation torque	15 Nm
Oil testing condition	ISO VG 46 cSt
Seal kit code	SLKT.001
Weight	0.005 kg

 **Performance Curve**

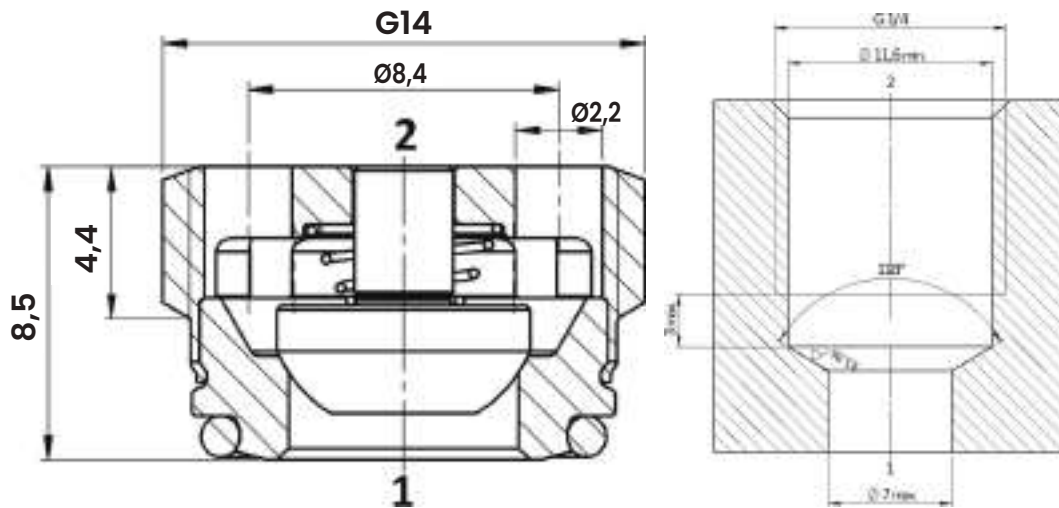
Spring N



**Note:**  
The performance chart illustrates flow handling capacity. p/Q curves are recorded at TOil = 40°C and 46 cSt.

 **Dimensional Drawing**

**Cross Section and Cavity Details**



 **Ordering Code**

**S** • **D** **0** • **G** **1** **4** • **0** \* • **0** **0** **0**

valve basic code

Cavity  
G14 = METRIC G18 x 1

Marking  
0 = standard factory marking. customized marking can be done upon request

Bias Spring Options

Spring Model Code	Cracking Pressure (Bar)
N	0.5

000= standard configuration