



# Pilot Check Valves

## SP.C4.M18 Valve Series

**METRIC Cartridge - 350 Bar**

**Direct acting check valve**

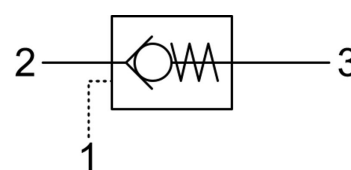
**Pilot piston to open**

PILOT CHECK VALVES



### Description & Operation

Cartridge style, normally closed, single pilot check valve. Cartridge is closed until sufficient pressure is applied on port 1 to reach the bias spring setting, lift the poppet and allow free flow to 2. The valve is normally closed from 2 to 1. When sufficient pressure is applied on port 3, the pilot piston lifts the poppet from its seat and allows flow from 2 to 1. Very limited leakage in the check condition.



Hydraulic Symbol



### Technical Data

Maximum operating pressure	350 Bar
Maximum flow	40 LPM
Maximum internal leakage	0.10 cm <sup>3</sup> / min @ 10 Bar 0.10 cm <sup>3</sup> / min @ 350 Bar
Pilot Ratio	3.2:1
External component treatment	Zn/Fe - standard (96h) Zn/Ni (720h)
O-ring Temperature Range	-30° C to 110° C (standard sealing NBR - BUNA-N)
Oil Temperature Range	-30° C to 110° C
Fluids	Mineral - based or synthetics with lubricating properties
Viscosities	7.4 to 420 cSt
Filtration	20/18/15 ISO 4406 (maximum filtration admitted)
Orientation	No restrictions
Installation torque	35 - 40 Nm
Oil testing condition	ISO VG 46 cSt
Seal kit code	SLKT.041
Weight	0.060 kg

