



# 90 DEGREE ROTATING COUPLING

## GG 90°

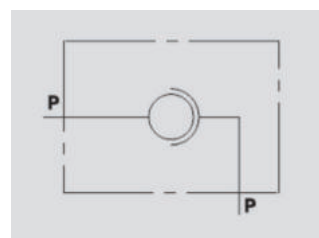
**Flow Upto 700 LPM**  
**Pressure 400 Bar**



### Description & Operation

These valves are mounted between the end of a flexible hose and a fixed component to compensate hose's rotations and torsions and to prevent damage. They are not suitable for fast and continuous rotations. They are used in every application where moving flexible hose are used. 90° mounting.

Connect ports P .



Hydraulic Symbol



### Technical Data

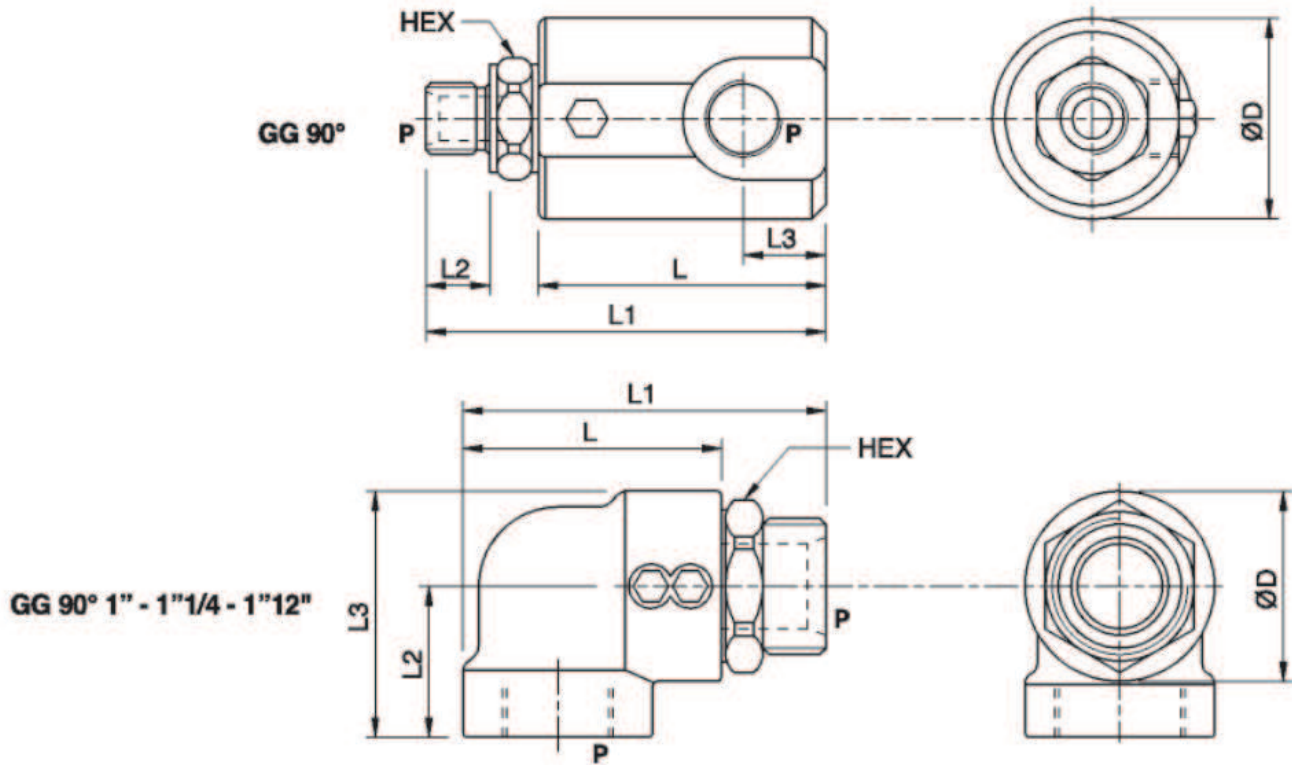
Maximum Flow	700 LPM
Maximum Operating Pressure	400 Bar
Body Material	Steel
Internal parts	Hardened and Ground steel
External Component treatment	/
Oil Temperature	50 Deg. C
Fluids	Mineral based or synthetics with lubricating properties
Viscosity	30 cSt
Standard Sealing	NBR-Buna N
Filtration	20/18/15 ISO 4406 ( Max. Filtration admitted)
Orientation / Mounting	Inline
Weight	See Ordering details



### Specifications

Type	Max Flow	Max Rotation Pressure	Max Pressure
	LPM	Bar	Bar
GG 90° 1/4"	25	200	400
GG 90° 3/8	35	200	400
GG 90° 1/2"	60	150	300
GG 90° 3/4"	100	150	300
GG 90° 1"	180	100	300
GG 90° 1" 1/4"	270	100	300
GG 90° 1" 1/2"	350	80	300
GG 90° 2"	700	50	250

 **Dimensional Drawing**



 **Ordering Details**

Code	Type	P	L	L1	L2	L3	HEX	ØD	Weight
		GAS	mm	mm	mm	mm	mm	mm	Kg
R-G0990	GG 90° 1/4"	1/4"	50	69	11	11	19	34	0.312
R-G1010	GG 90° 3/8"	3/8"	54	76	14	13	24	38	0.418
R-G1020	GG 90° 1/2"	1/2"	63	87	15	14	27	40	0.522
R-G1030	GG 90° 3/4"	3/4"	74	104	19	19.5	34	54.5	0.898
R-G1040	GG 90° 1"	1"	87	119	21	24	41	60	1.430
R-G1042	GG 90° 1" 1/4"	1" 1/4"	84	119.5	52	82	50	63	1.746
R-G1043	GG 90° 1" 1/2"	1" 1/2"	102	140	62	101	55	77	3.070
R-G1044	GG 90° 2"	2"	107	151	64	107	65	84	3.300

 **On Request**

- NPT thread (code GN....instead of G....example: GG90 1/4" NPT code = GN0990)
- GX Inox (code GX....instead of G....example: GG90 1/4" INOX code = GX0990)