



6 WAYS DIVERTER VALVES

DF 6

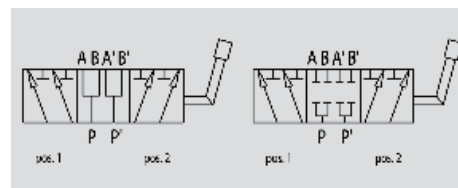
Flow Upto 200 LPM
Pressure 300 Bar



Description & Operation

This valve is made up by two 3-ways diverters coupled: together each of the 2 valves is used to divert the inlet flow towards two ports. A single lever controls both section at the same time. It's ideal to control 2 actuators.

Connect P and P' to the 2 pressure flows, ports A and B to the first actuator and ports A' and B' to the second actuator. With lever in position 1, P is connected to A and P' to A'; with lever in position 2, P is connected to B and P' to B'. With lever in central position all ports are connected to each other (opened centre).



Hydraulic Symbol
(with opened centre)

On Request
(with Closed centre)



Technical Data

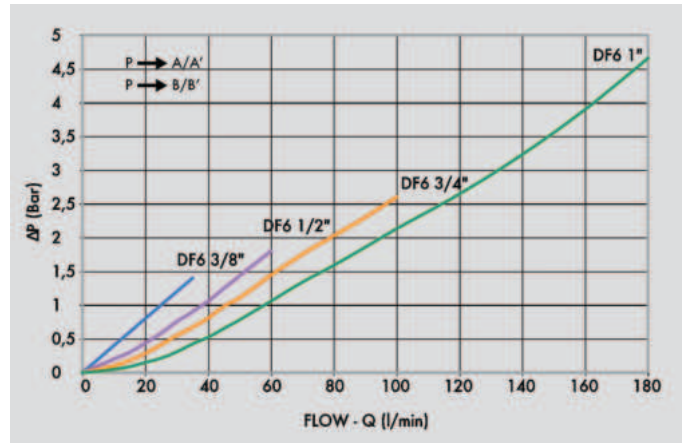
Maximum Flow	200 LPM
Maximum Operating Pressure	300 Bar
Body Material	Cast Iron
Internal parts	Hardened and Ground steel
Oil Temperature	50 Deg. C
Fluids	Mineral based or synthetics with lubricating properties
Viscosity	30 cSt
Standard Sealing	NBR-Buna N
Filtration	20/18/15 ISO 4406 (Max. Filtration admitted)
Orientation / Mounting	Inline
Weight	See Ordering details



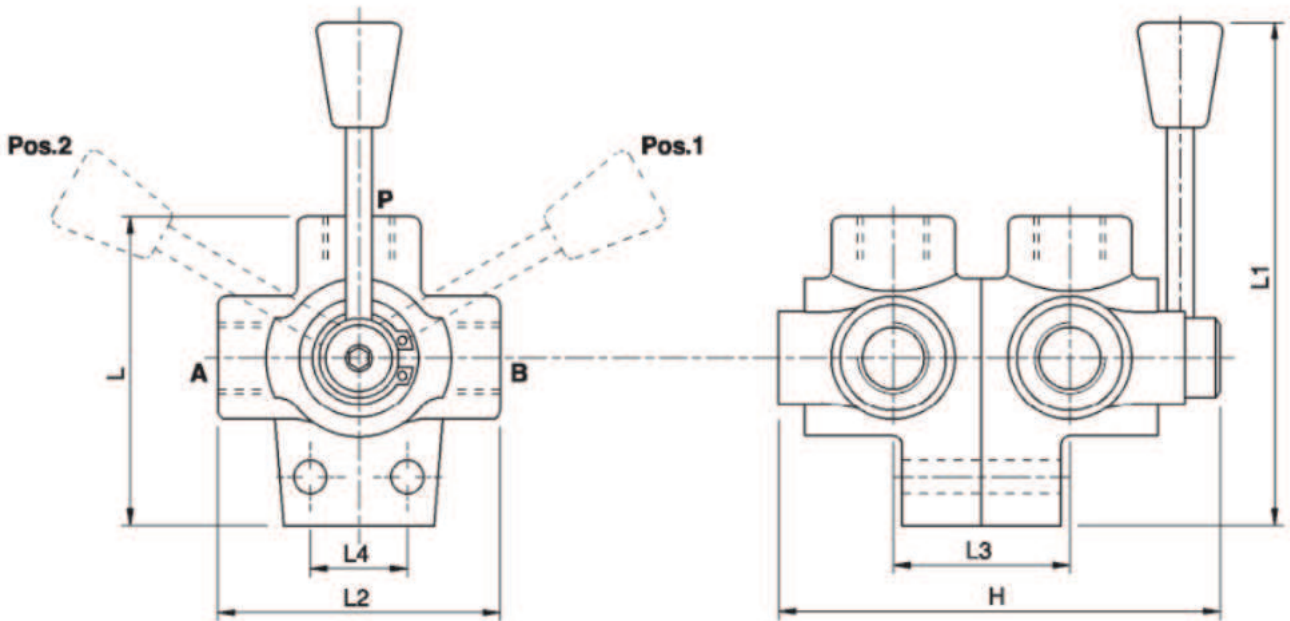
Specifications

Type	Max.Flow	Max.Pressure
	LPM	Bar
DF 6 VIE 3/8"	60	300
DF 6 VIE 1/2"	90	250
DF 6 VIE 3/4"	120	220
DF 6 VIE 1"	200	220

 **Performance Curve**



 **Dimensional Drawing**



 **Ordering Details**

Code	Type	A-B P-T	L	L1	L2	L3	L4	H	Weight
		GAS	mm	mm	mm	mm	mm	mm	Kg
R-V0920	DF 6 VIE 3/8"	G 3/8"	77	169	146	42	24	146	1.688
R-V0940	DF 6 VIE 1/2"	G 1/2"	96	180	170	50	92	170	2.900
R-V0950	DF 6 VIE 3/4"	G 3/4"	100	180	180	56	32	180	3.650
R-V0960	DF 6 VIE 1"	G 1"	115	207	192	65	32	192	5.100

 **On Request**

- Closed center (CODE / CC)

DIVERTER VALVES