



4 WAYS DIVERTER VALVES

IF 4

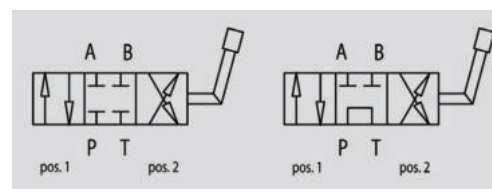
Flow Upto 120 LPM
Pressure 300 Bar



Description & Operation

This valve is used to reverse oil flow from 2 inlets to two outlets. It can be used to control double acting actuators or to reverse the rotation of hydraulic motor.

Connect P to the pressure flow, T to return and ports A and B to the actuators or motor. With lever in position 1, P is connected to A and at the same time B drains into the tank T; with lever in position 2, P is connected to B and at the same time A drains into tank T. With lever in central position all ports are closed (closed centre)



Hydraulic Symbol
(with opened centre)

On Request
(with Closed centre)



Technical Data

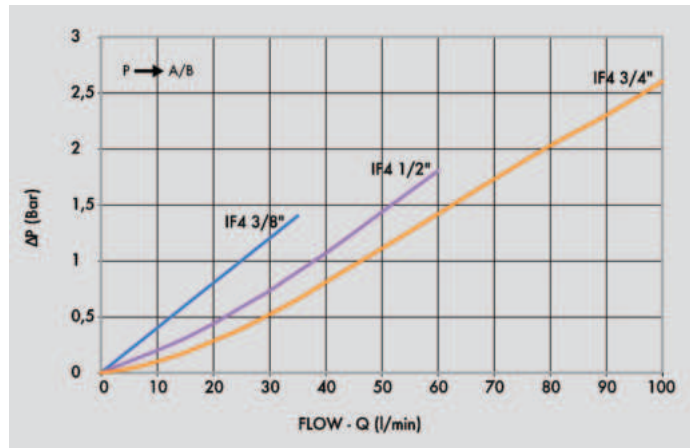
Maximum Flow	120 LPM
Max. Operating Pressure	300 Bar
Body Material	Cast Iron
Internal parts	Hardened and Ground steel
Oil Temperature	50 Deg. C
Fluids	Mineral based or synthetics with lubricating properties
Viscosity	30 cSt
Standard Sealing	NBR-Buna N
Filtration	20/18/15 ISO 4406 (Max. Filtration admitted)
Orientation / Mounting	Inline
Weight	See Ordering details



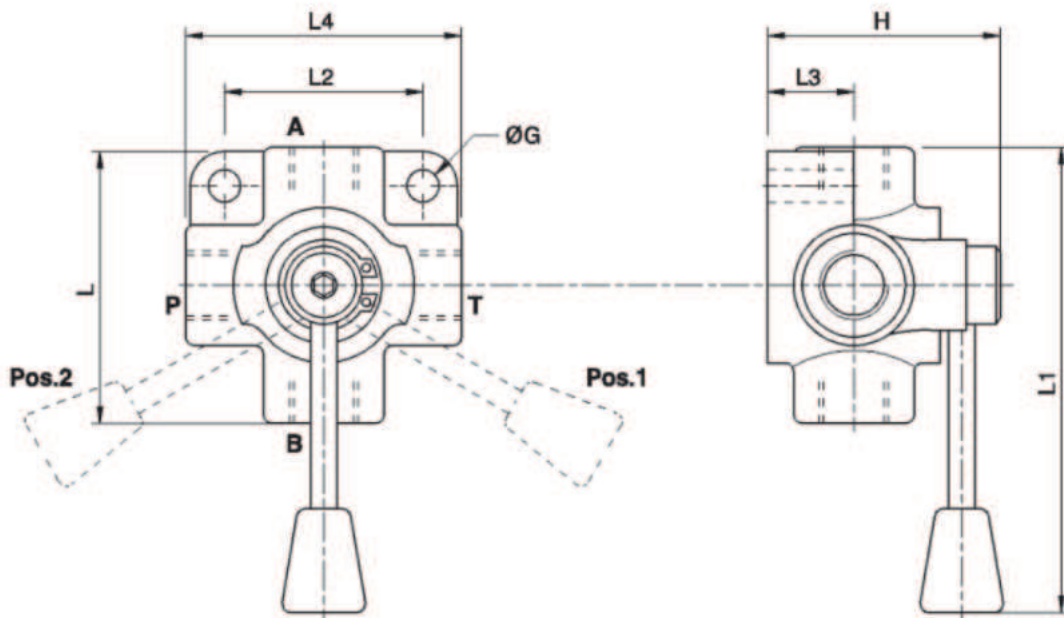
Specifications

Type	Max.Flow	Max.Pressure
	LPM	Bar
IF 4 VIE 3/8"	60	300
IF 4 VIE 1/2"	90	250
IF 4 VIE 3/4"	120	250

 Performance Curve



 Dimensional Drawing



 Ordering Details

Code	Type	A-B P-T	L	L1	L2	L3	L4	ØG	H	Weight
		GAS	mm	mm	mm	mm	mm	mm	mm	Kg
R-V0970	IF 4 VIE 3/8"	G 3/8"	77	165	53.5	24	77	8.5	70	1.270
R-V0980	IF 4 VIE 1/2"	G 1/2"	90	168	68	28	90	8.5	80	1.870
R-V0990	IF 4 VIE 3/4"	G 3/4"	95	195	74	32	95	8.5	90	2.500

 On Request

- Open center (CODE / CA)

DIVERTER VALVES