

# HIGH PRESSURE 3 WAYS DIVERTER VALVES, STEEL BODY



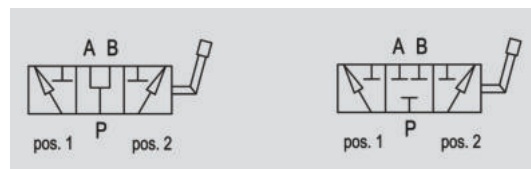
## DF AP

**Flow Upto 180 LPM**  
**Pressure 500 Bar**

### Description & Operation

Diverter valves are used to divert the flow towards 2 different outlets.

Connect P to the pressure flow, A and B to the ports of the hydraulic circuit where flow has to be diverted. With lever in position 1 the flow is connected towards port A; with lever in position 2, the flow is connected towards port B. With lever in central position ports P, A and B are all connected (opened centre).



Hydraulic Symbol  
(with opened centre)

On Request  
(with Closed centre)

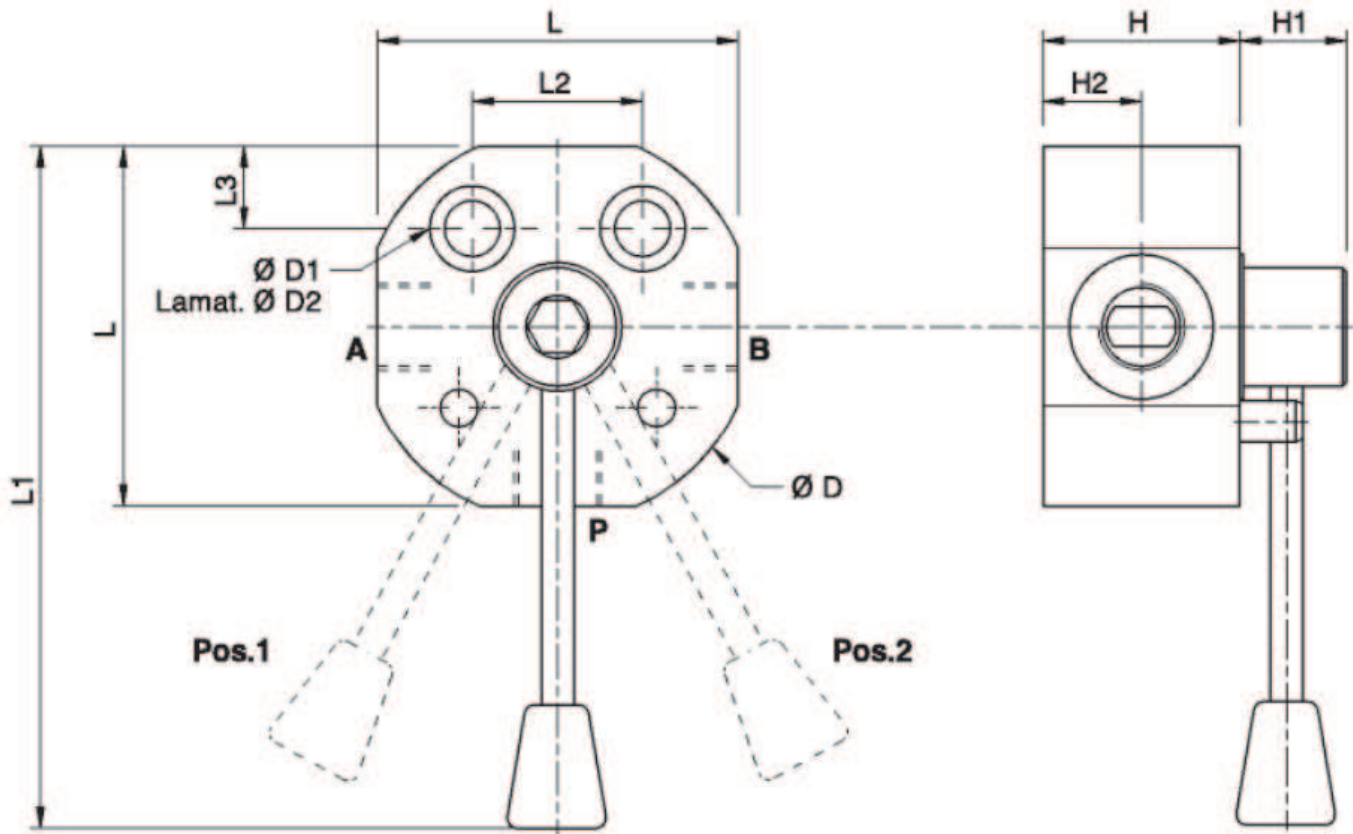
### Technical Data

Maximum Flow	180 LPM
Maximum Pressure	500 Bar
body Material	Steel
Internal parts	Hardened and Ground steel
External Component treatment	/
Oil Temperature	50 Deg. C
Fluids	Mineral based or synthetics with lubricating properties
Viscosity	30 cSt
Standard Sealing	NBR-Buna N
Filtration	20/18/15 ISO 4406 ( Max. Filtration admitted)
Orientation / Mounting	Inline
Weight	See Ordering details

### Specifications

Type	Max.Flow	Max.Pressure
	LPM	Bar
DF 3 VIE 1/4" AP ACC.	40	500
DF 3 VIE 3/8" AP ACC.	60	500
DF 3 VIE 1/2" AP ACC.	90	500
DF 3 VIE 3/4" AP ACC.	120	500
DF 3 VIE 1" AP ACC.	180	500

 **Dimensional Drawing**



 **Ordering Details**

Code	Type	A-B P	L	L1	L2	L3	D	D1	D2	H	H1	H2
		GAS	mm	mm	mm	mm	mm	mm	mm	mm	mm	mm
R-V0879/AP	DF 3 VIE 1/4" AP ACC.	1/4"	60	155	30	10	/	8.5	13.5	42.5	21	20
R-V0881/AP	DF 3 VIE 3/8" AP ACC	3/8"	56	148	26	10	62	8.5	13.5	42.5	21	23.5
R-V0891/AP	DF 3 VIE 1/2" AP ACC	1/2"	70	160	32	11	75	9.5	/	38	25	19
R-V0901/AP	DF 3 VIE 3/4" AP ACC	3/4"	80	165	32	11	100	10.5	17	58	20	31
R-V0911/AP	DF 3 VIE 1" AP ACC	1"	90	170	32	11	108	10.5	17	62	20	33

 **On Request**

- Closed center (CODE / CC)