

BRAKES RELEASE VALVE, FLANGEABLE TO DANFOSS MOTORS OMP / OMR & OMS

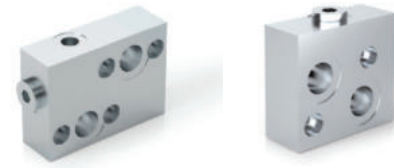


VSBF

Flow Upto 60 LPM
Pressure 300 Bar

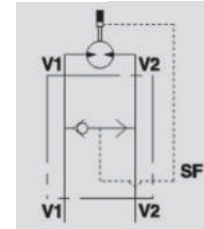
Description & Operation

This valve is used to unlock the motors hydraulic brake. Flange V1 and V2 to the motor, connect the other side of V1 and V2 to the pressure flow and connect the 1/4" port to the motor brake.



TIPO/TYPE
VSBF OMS

TIPO/TYPE
VSBF OMP/OMS



Hydraulic Symbol

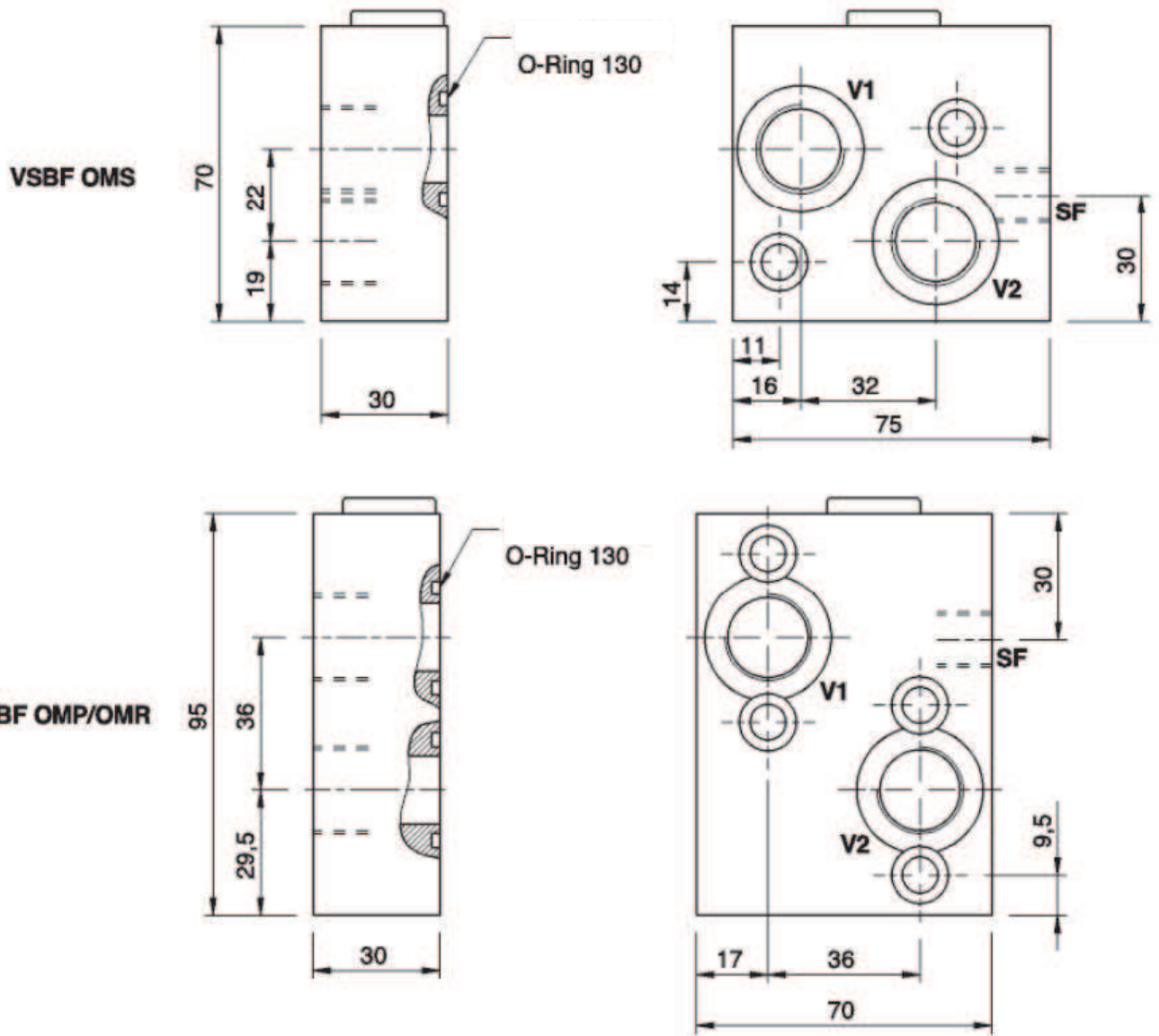
Technical Data

Maximum Flow	60 LPM
Maximum Operating Pressure	300 Bar
body Material	Steel
Internal parts	Hardened and Ground steel
External Component treatment	Zn/Fe - standard (96h) / Zn/Ni (720h)
Oil Temperature	50 Deg. C
Fluids	Mineral based or synthetics with lubricating properties
Viscosity	30 cSt
Standard Sealing	NBR-Buna N
Filtration	20/18/15 ISO 4406 (Max. Filtration admitted)
Orientation / Mounting	Inline
Weight	See Ordering details

Specifications & Ordering Details

Type	Max Flow	Max Pressure	Weight	V1-V2	SF
	Bar	Bar	Kg		
VSBF 1/2" OMP/OMR	60	300	1.312	G 1/2"	G 1/4"
VSBF 1/2" OMS	40	300	1.018	G 1/2"	G 1/4"

 **Dimensional Drawing**



 **Ordering Details**

Code	Type	V1-V2	SF	Weight
				Kg.
R-V0333	VSBF 1/2" OMP/OMR	G 1/2"	G 1/4"	1.312
R-V0334	VSBF 1/2" OMS	G 1/2"	G 1/4"	1.018

DUAL CROSS RELIEF VALVES