



MANUAL EMERGENCY VALVE

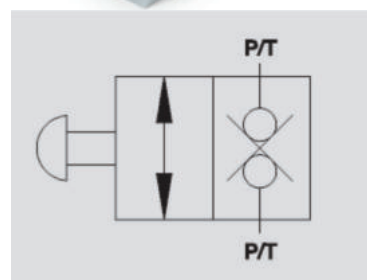
VEM

Flow Upto 70 LPM
Pressure 350 Bar

Description & Operation

This pushbutton valve allows oil flow in hydraulic circuit by means of a slider. Once the manual button is pushed oil flows from P to T or vice versa. Typically used as emergency valves on lifting equipment.

Connect the ports P and T to either control valve or circuit. When the button is passed there is free flow, otherwise the flow is blocked in both directions.



Hydraulic Symbol

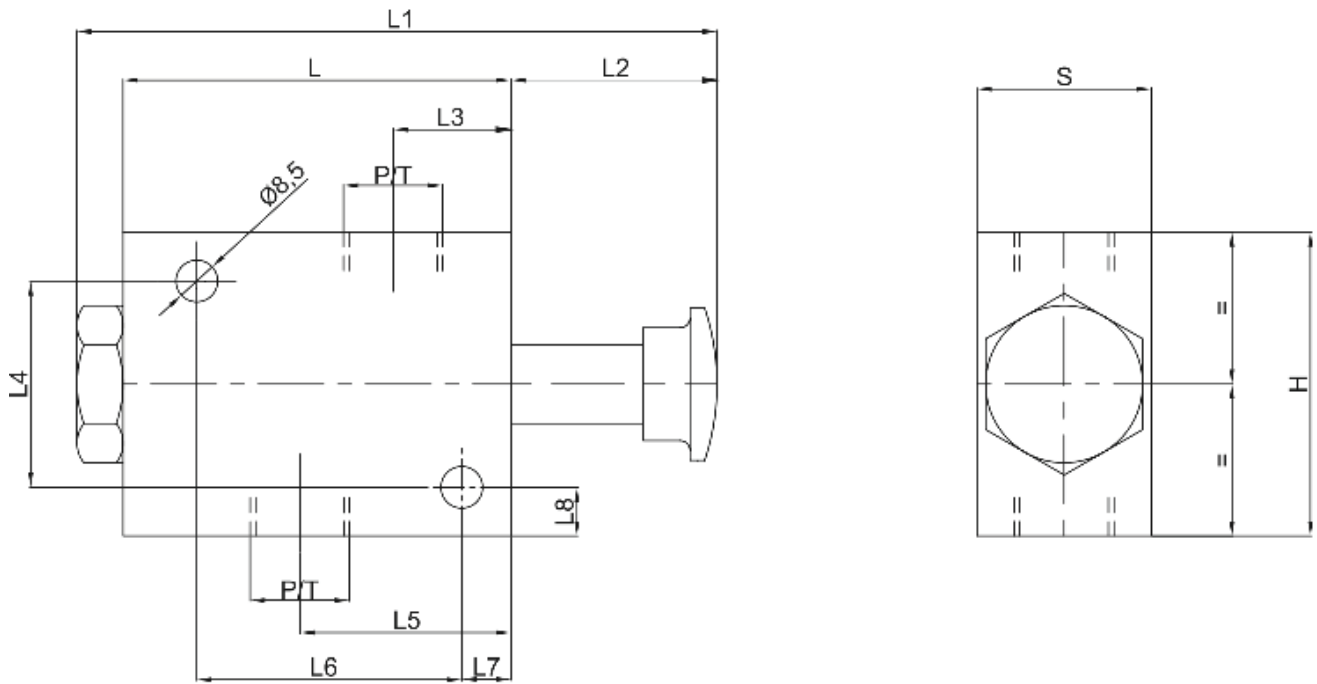
Technical Data

Maximum Flow	70 LPM
Maximum Operating Pressure	350 Bar
Body Material	Steel
Internal parts	Hardened and Ground steel
External Component treatment	Zn/Fe - standard (96h) / Zn/Ni (720h)
Oil Temperature	50 Deg. C
Fluids	Mineral based or synthetics with lubricating properties
Viscosity	30 cSt
Standard Sealing	NBR-Buna N
Filtration	20/18/15 ISO 4406 (Max. Filtration admitted)
Orientation / Mounting	Inline
Weight	See Ordering details

Specifications

Type	Max Flow	Max Pressure
	LPM	Bar
VEM 1/2"	70	350

 **Dimensional Drawing**



 **Ordering Details**

Code	Type	P/T	L	L1	L2	L3	L4	L5	L6	L7	L8	H	S	Weight
		GAS	mm	mm	mm	mm	mm	mm	mm	mm	mm	mm	mm	Kg
R-V1320	VEM 1/2"	G 1/2"	79	130	42	24	42	43	54	10	10	62	35	1.220

DUAL CROSS RELIEF VALVES