

DOUBLE ACTING PLOUGH OVERTURNING VALVE WITH ALIGNMENT FOR IN FARROW PLOUGHS



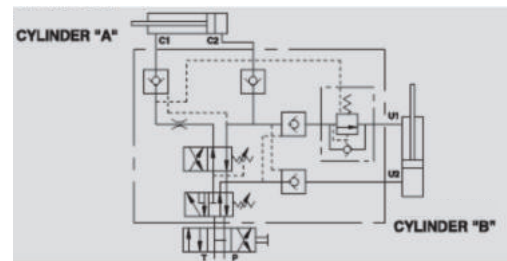
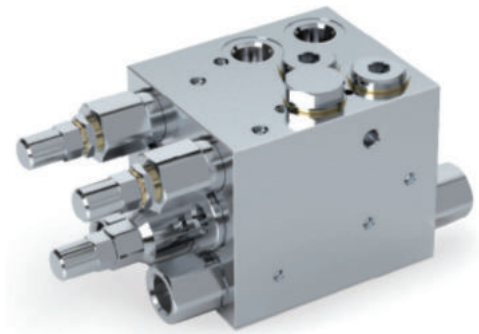
VRAP DE SV

Maximum Exchange Pressure 230 Bar
Maximum Pressure 400 Bar

Description & Operation

This valve has been designed for use with two cylinders in sequence for reversible plough to obtain the automatic alignment of load and its overturning. The rotation of the frame is upwards. Two different calibrated restrictors have been designed, depending on the diameter of the overturning cylinder, onto which the valves are fitted. This valve allows the plough to be stopped at 90° (dead head point).

Operating instructions: first the alignment cylinder starts lining up the load. Once it reaches the end of stroke, the overturning cylinder starts the rotation. Upon the completion of this the alignment cylinder takes the plough back into its working position. Connect C1 to the rod side, C2 to the head side of the rotation cylinder, U1 to the head side and U2 to the rod side of the alignment cylinder. P and T to the machine's pressure flow. Thanks to its shape, it can be assembled in-line on the hydraulic cylinder or directly fixed onto the plough by the threaded hole in the valve body.



Hydraulic Symbol

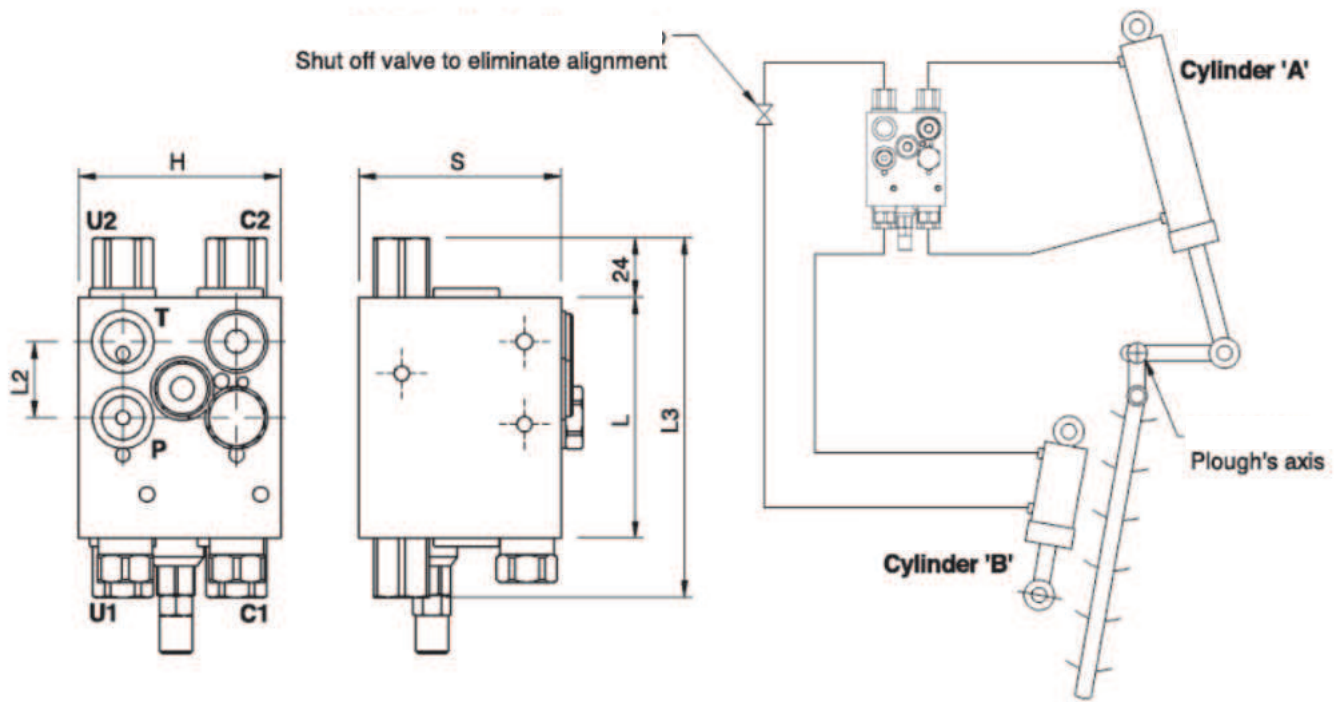
Technical Data

Maximum Exchange Pressure	230 Bar
Maximum Operating Pressure	400 Bar
Body Material	Steel
Internal parts	Hardened and Ground steel
External Component treatment	Zn/Fe - standard (96h) / Zn/Ni (720h)
Oil Temperature	50 Deg. C
Fluids	Mineral based or synthetics with lubricating properties
Viscosity	30 cSt
Standard Sealing	NBR-Buna N
Filtration	20/18/15 ISO 4406 (Max. Filtration admitted)
Orientation / Mounting	Inline
Weight	See Ordering details

Specifications

Type	Max Exchange Pressure	Max Pressure
	Bar	Bar
VRAP 70/80 DE SV	230	400
VRA 80/100 DE SV	230	400

 **Dimensional Drawing**



 **Ordering Details**

Code	Type	C1-C2 U1-U2	L	L1	L2	L3	H	S	Weight
		GAS	mm	mm	mm	mm	mm	mm	Kg
R-V0345	VRAP 70/80 DE SV	G 3/8"	94	58	30	176	80	80	4.800
R-V0346	VRAP 80/100 DE SV	G 3/8"	94	58	30	176	80	80	4.800

PLOUGH OVERTURNING VALVES