

# DOUBLE ACTING PLOUGH OVERTURNING VALVE WITH ALIGNMENT FOR IN FARROW PLOUGHS



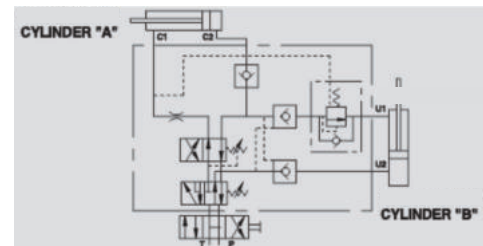
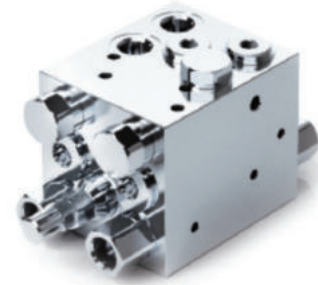
## VRAP SE/SV

**Maximum Exchange Pressure 230 Bar**  
**Maximum Pressure 400 Bar**

### Description & Operation

This valve has been designed for use on two cylinders in sequence for reversible plough to obtain the automatic alignment of load and its overturning. The rotation of the frame is upwards giving the possibility to equip the plough of a wheel for towing. Two different calibrated restrictors have been designed, depending on diameter of overturning cylinder, onto which valves are fitted. **Operating instruction:** first the alignment cylinder starts lining up the load. Once it reaches the end stroke, the overturning cylinder starts the rotation. Upon the completion of the alignment cylinder takes the plough back into its working position.

Connect C1 to the rod side, C2 to the head side of the rotation cylinder, U1 to the head side and U2 to the rod side of the alignment cylinder. P and T to the machine's pressure flow. Thanks to its shapes, it can be assembled into on the hydraulic cylinder or directly fixed onto the plough by the threaded hole in the valve body.



Hydraulic Symbol

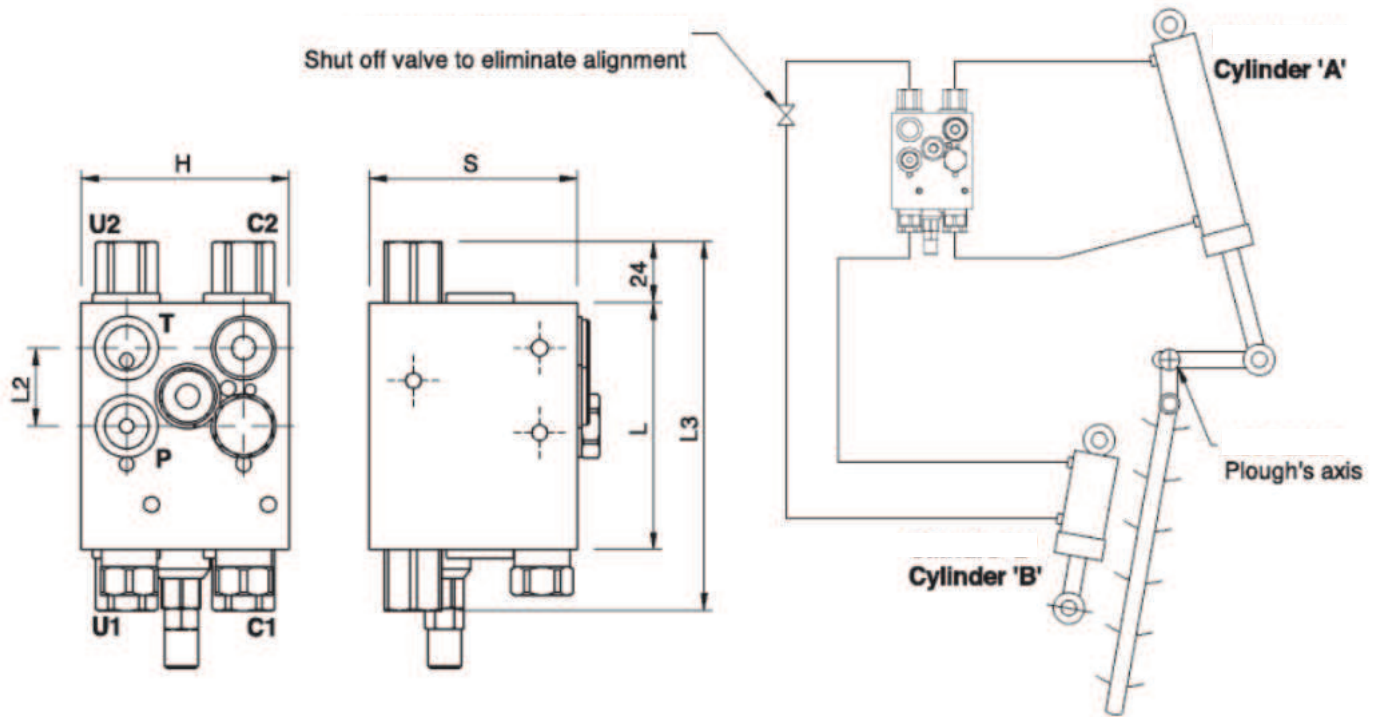
### Technical Data

Maximum Exchange Pressure	230 Bar
Maximum Operating Pressure	400 Bar
Body Material	Steel
Internal parts	Hardened and Ground steel
External Component treatment	Zn/Fe - standard (96h) / Zn/Ni (720h)
Oil Temperature	50 Deg. C
Fluids	Mineral based or synthetics with lubricating properties
Viscosity	30 cSt
Standard Sealing	NBR-Buna N
Filtration	20/18/15 ISO 4406 ( Max. Filtration admitted)
Orientation / Mounting	Inline
Weight	See Ordering details

### Specifications

Type	Max Exchange Pressure	Max Pressure
	Bar	LPM
VRAP 70/80 SE SV	230	400
VRAP 80/100 SE SV	230	400

 **Dimensional Drawing**



 **Ordering Details**

Code	Type	C2	L	L1	L2	L3	H	S	Weight
		P-T							
R-V0339	VRAP 70/80 SE SV	G 3/8"	94	58	30	142	80	80	4.760
R-V0340	VRAP 80/100 SE SV	G 3/8"	94	58	30	142	80	80	4.760

**PLOUGH OVERTURNING VALVES**