

DOUBLE ACTING PLOUGH ON LAND (OUTSIDE FURROW) OVERTURNING VALVES FOR CYLINDER WITH MEMORY AND WITHOUT MEMORY



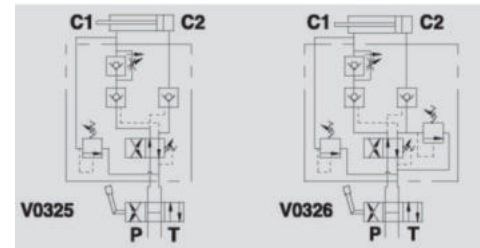
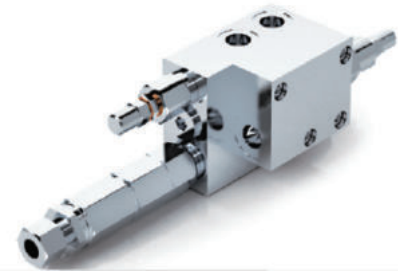
VRAP FSCM/SM

Maximum Exchange Pressure 250 Bar
Maximum Pressure 400 Bar

Description & Operation

Valves for actuators with memory (V0325): designed for use on cylinders with memory for on land reversible ploughs, it incorporates a relief valves which provides protection against shock forces when the plough passes the dead head point.

Valves for actuators without memory (V0326): designed for use on cylinders without memory for on land reversible ploughs, as well as the relief valve it has a pressure limiting function which reduces the maximum cylinder extension (head side) pressure in order not to damage the mechanical stops and the plough's structure. Both valves are provided with a fixed compensated flow control valve which allows constant speed whether the plough works in farrow or on land. Connect C1 and the relief valve to the cylinder's rod side, via the banjo bolt supplied with the valve. Connect C2 to the head side, P and T to the machine's supply.



Hydraulic Symbol

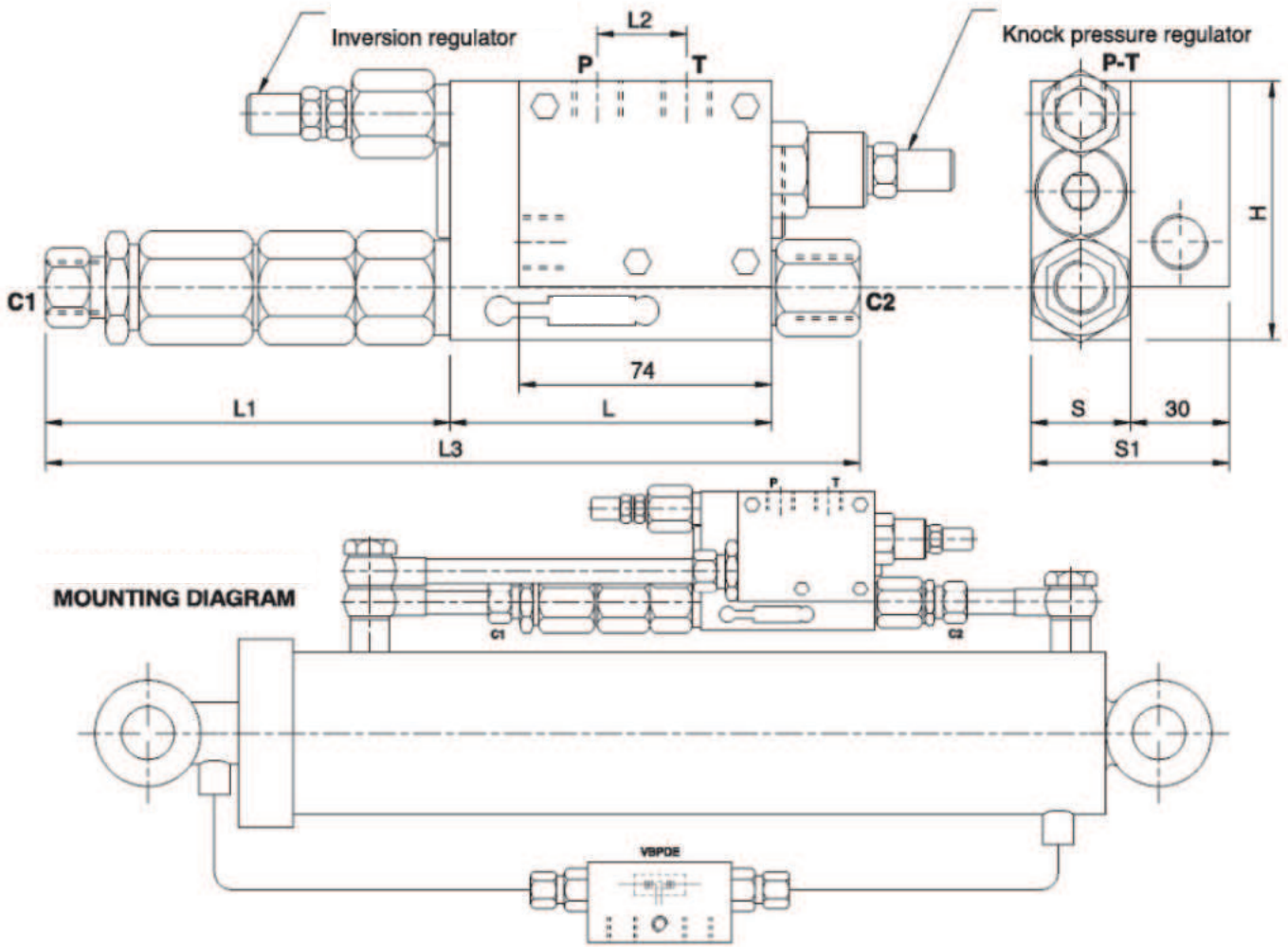
Technical Data

Maximum Exchange Pressure	250 Bar
Maximum Operating Pressure	400 Bar
Body Material	Steel
Internal parts	Hardened and Ground steel
External Component treatment	Zn/Fe - standard (96h) / Zn/Ni (720h)
Oil Temperature	50 Deg. C
Fluids	Mineral based or synthetics with lubricating properties
Viscosity	30 cSt
Standard Sealing	NBR-Buna N
Filtration	20/18/15 ISO 4406 (Max. Filtration admitted)
Orientation / Mounting	Inline
Weight	See Ordering details

Specifications

Type	Max Exchange Pressure	Max Pressure
	Bar	LPM
VRAP 110/130 FSCM	250	400
VRAP 110/130 FSSM	250	400

 Dimensional Drawing



 Ordering Details

Code	Type	C2	C1	L	L1	L2	L3	H	S	S1	Weight
		P-T									
R-V0325	VRAP 110/130 FSCM	G 3/8"	Ø12	94	123	30	241	80	35	65	3.390
R-V0326	VRAP 110/130 FSSM	G 3/8"	Ø12	94	123	30	241	80	35	65	3.390

PLOUGH OVERTURNING VALVES