

DOUBLE ACTING PLOUGH OVERTURNING VALVES WITH RELIEF VALVE



VRAP DE + VMP

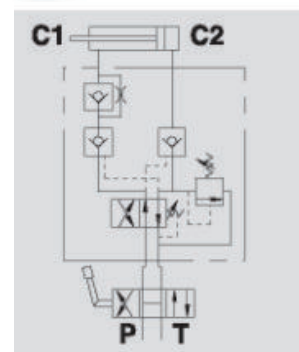
Maximum Exchange Pressure 250 Bar
Maximum Pressure 400 Bar

Description & Operation

This valve has been designed for use on cylinders for reversible ploughs to obtain the automatic oil flow reversal, and therefore the reversal of the hydraulic cylinder which rotates the plough. As well as a double pilot operated check valve it is provided with a maximum relief valve which reduces the pressure of cylinder extension (head side pressure) in order to protect the mechanical stops and the plough's structure. The reversal of the cylinder is controlled by a pressure compensated relief valve set to exactly in the dead head point of the plough, generating more power and speed.

It can be assembled on heavy and unbalanced ploughs with cylinders with the following internal diameters: 40/50, 60/80, 80/100, 100/110, 110/130 mm.

Connect C1 to the cylinder's rod side, C2 to the head side, P and T to the machine's pressure flow. Thanks to its shape, it can be assembled in-line on the hydraulic cylinder or directly fixed onto the plough by the threaded hole in the valve body.



Hydraulic Symbol

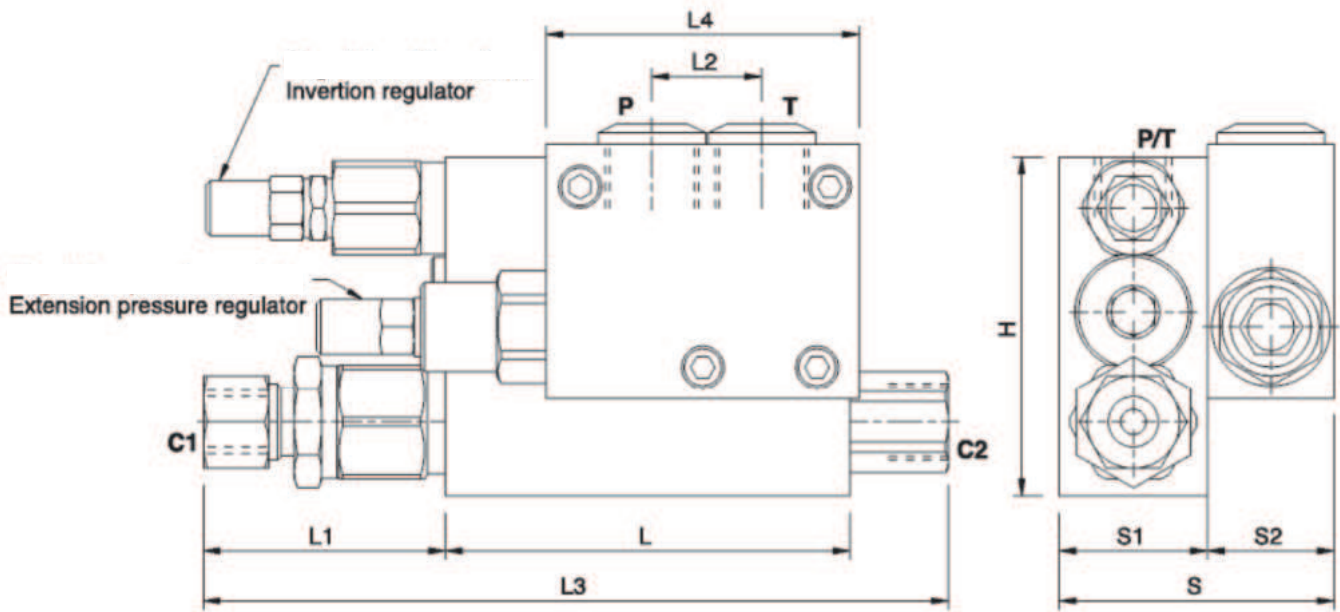
Technical Data

Maximum Exchange Pressure	250 Bar
Maximum Operating Pressure	400 Bar
Body Material	Steel
Internal parts	Hardened and Ground steel
External Component treatment	Zn/Fe - standard (96h) / Zn/Ni (720h)
Oil Temperature	50 Deg. C
Fluids	Mineral based or synthetics with lubricating properties
Viscosity	30 cSt
Standard Sealing	NBR-Buna N
Filtration	20/18/15 ISO 4406 (Max. Filtration admitted)
Orientation / Mounting	Inline
Weight	See Ordering details

Specifications

Type	Max Exchange Pressure	Max Pressure
	Bar	Bar
VRAP 40/50 DE + VMP	250	250
VRAP 60/80 DE + VMP	250	400
VRAP 80/100 DE + VMP	250	400
VRAP 100/110 DE + VMP	250	400
VRAP 110/130 DE + VMP	250	400

 **Dimensional Drawing**



 **Ordering Details**

Code	Type	C2	C1	L	L1	L2	L3	L4	H	S1	S2	S	Weight Kg
		P-T GAS											
R-V0348	VRAP 40/50 DE + VMP	G 3/8"	Ø12	94	58	30	176	72	80	35	30	65	3.200
R-V0350	VRAP 60/80 DE + VMP	G 3/8"	Ø12	94	58	30	176	72	80	35	30	65	3.200
R-V0360	VRAP 80/100 DE + VMP	G 3/8"	Ø12	94	58	30	176	72	80	35	30	65	3.190
R-V0376	VRAP 100/110 DE + VMP	G 3/8"	Ø12	94	58	30	176	72	80	35	30	65	3.190
R-V0380	VRAP 110/130 DE + VMP	G 3/8"	Ø12	94	58	30	176	72	80	35	30	65	3.160

PLOUGH OVERTURNING VALVES