

# PUSHBUTTON END OF STROKE VALVES, NORMALLY OPEN



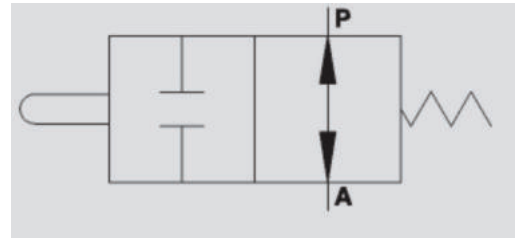
## VF-NA

**Flow Upto 60 LPM**  
**Pressure 350 Bar**

### Description & Operation

This valve is used to block oil passage in a hydraulic circuit (normally opened valve). The valve closes by mechanically pushing the slider.

Connect P to the circuit and A directly to tank. The mounting scheme can vary according to the use.



Hydraulic Symbol

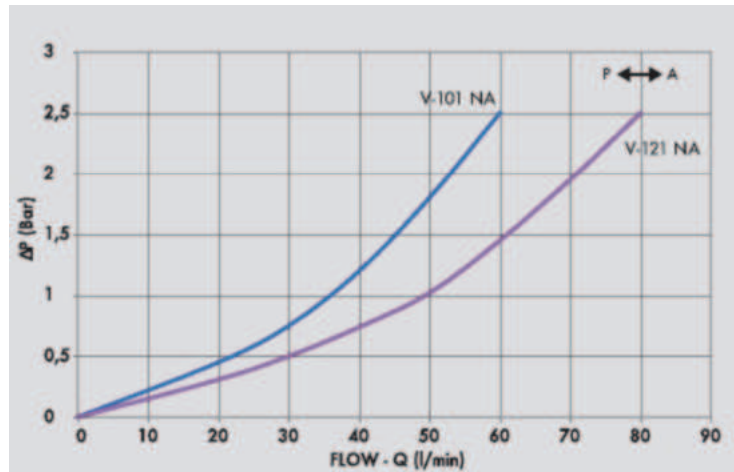
### Technical Data

Maximum Flow	60 LPM
Maximum Pressure	350 Bar
Body Material	Steel
Internal parts	Hardened and Ground steel
External Component treatment	Zn/Fe - standard (96h) / Zn/Ni (720h)
Oil Temperature	50 Deg. C
Fluids	Mineral based or synthetics with lubricating properties
Viscosity	30 cSt
Standard Sealing	NBR-Buna N
Filtration	20/18/15 ISO 4406 ( Max. Filtration admitted)
Orientation / Mounting	Inline
Weight	See Ordering details

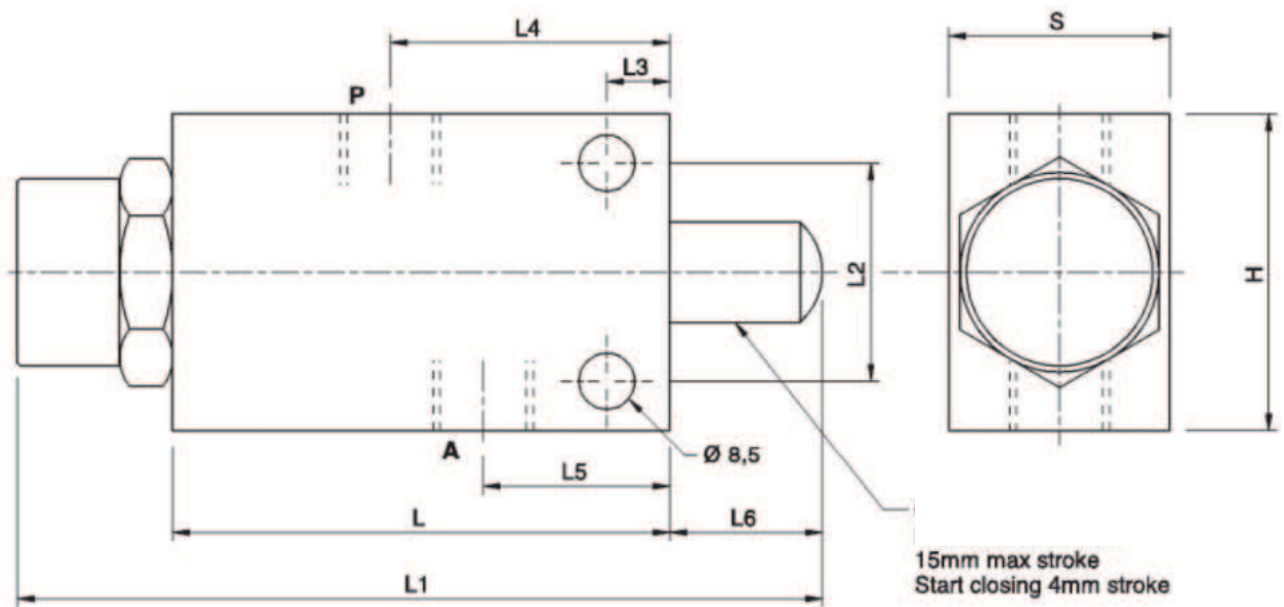
### Specifications

Type	Max.Flow	Max.Pressure
	LPM	Bar
V - 101 3/8" NA	45	350
V - 121 1/2" NA	60	350

 Performance Curve



 Dimensional Drawing



 Ordering Details

Code	Type	A-P	L	L1	L2	L3	L4	L5	L6	H	S	Weight
		GAS	mm	mm	mm	mm	mm	mm	mm	mm	mm	Kg
R-V0817	V-101 3/8" NA	G 3/8"	80	129	35	8	53	26	24	62	35	1.220
R-V0818	V-121 1/2" NA	G 1/2"	80	129	35	8	53	26	24	62	35	1.250

**END OF STROKE VALVES**