

END OF STROKE VALVE WITH CAM, NORMALLY CLOSED



V-FCC NC

Flow Upto 70 LPM
Pressure 350 Bar

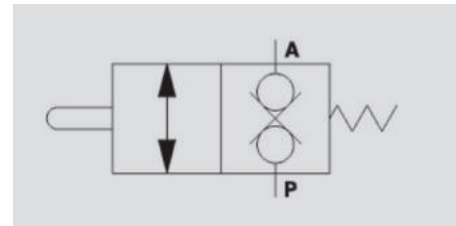
Description & Operation

This valve is used to open the inlet to a hydraulic circuit (Valve normally closed)

Once the spool is mechanically actuated the flow is free from P to A. It can be principally used for:

- a) Setting the sequence of 2 actuators
- b) As an end of stroke valve, where the flow is connected to tank.

Connect P to the circuit and A directly to tank. The mounting scheme can vary according to the use.



Hydraulic Symbol

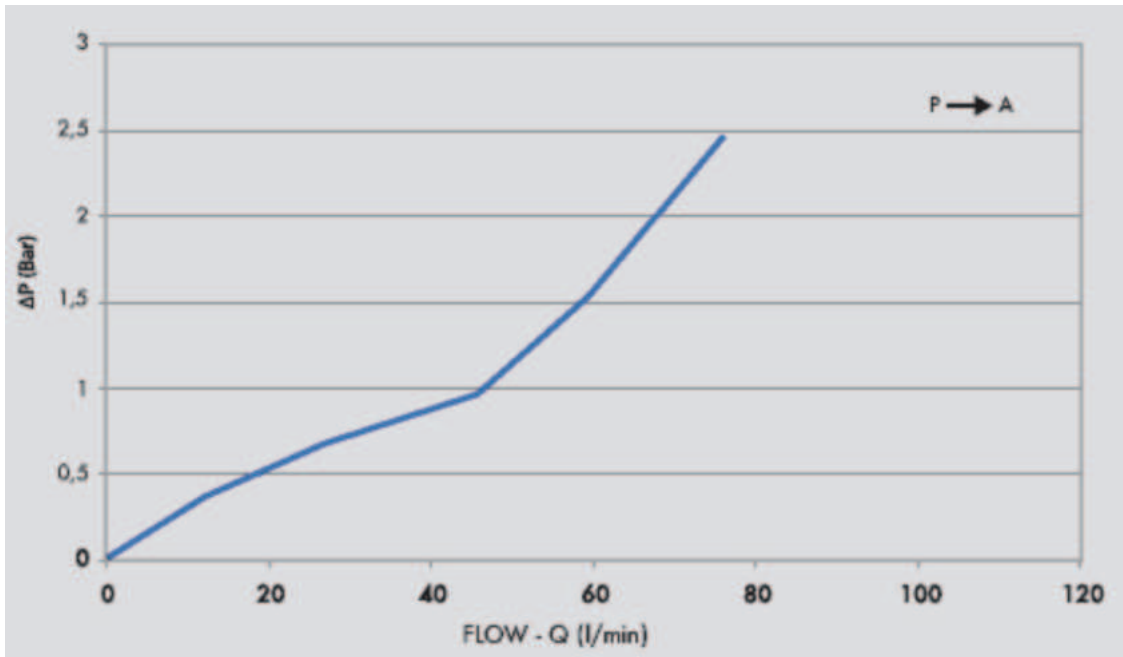
Technical Data

Maximum Flow	70 LPM
Maximum Pressure	350 Bar
Body Material	Steel
Internal parts	Hardened and Ground steel
External Component treatment	Zn/Fe - standard (96h) / Zn/Ni (720h)
Oil Temperature	50 Deg. C
Fluids	Mineral based or synthetics with lubricating properties
Viscosity	30 cSt
Standard Sealing	NBR-Buna N
Filtration	20/18/15 ISO 4406 (Max. Filtration admitted)
Orientation / Mounting	Inline
Weight	See Ordering details

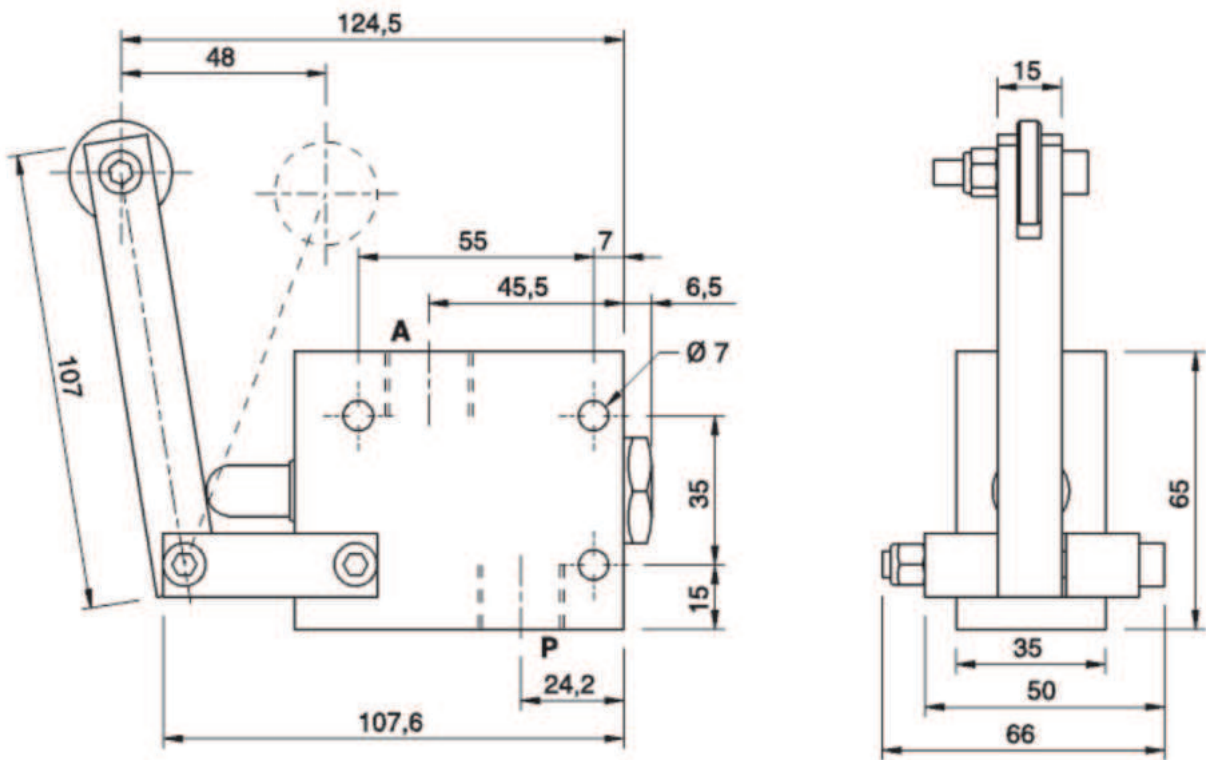
Ordering Code & Specifications

Type	Max.Flow	Max.Pressure	Weight
	LPM	Bar	Kg.
V - FCC 1/2" NC	70	350	1.570

 Performance Curve



 Dimensional Drawing



END OF STOKE VALVES