

# PUSH BUTTON END STROKE VALVES, NORMALLY CLOSED



## VF-NC

**Flow Upto 100 LPM**  
**Pressure 350 Bar**

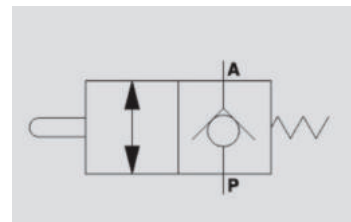


### Description & Operation

This valve is used to open the inlet to a hydraulic circuit (Valve normally closed). Once the spool is mechanically actuated, the flow is free from P to A. It can be principally used for:

- Setting the sequences of 2 actuators
- As an end of stroke valve, where the flow is connected to tank.

Connect P to the circuit and A directly to tank. The mounting scheme can vary according to the use.



Hydraulic Symbol



### Technical Data

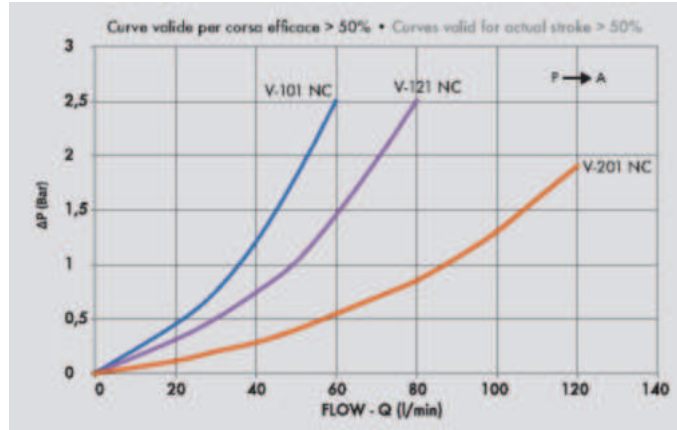
Maximum Flow	100 LPM
Maximum Pressure	350 Bar
Body Material	Steel
Internal parts	Hardened and Ground steel
External Component treatment	Zn/Fe - standard (96h) / Zn/Ni (720h)
Oil Temperature	50 Deg. C
Fluids	Mineral based or synthetics with lubricating properties
Viscosity	30 cSt
Standard Sealing	NBR-Buna N
Filtration	20/18/15 ISO 4406 ( Max. Filtration admitted)
Orientation / Mounting	Inline
Weight	See Ordering details



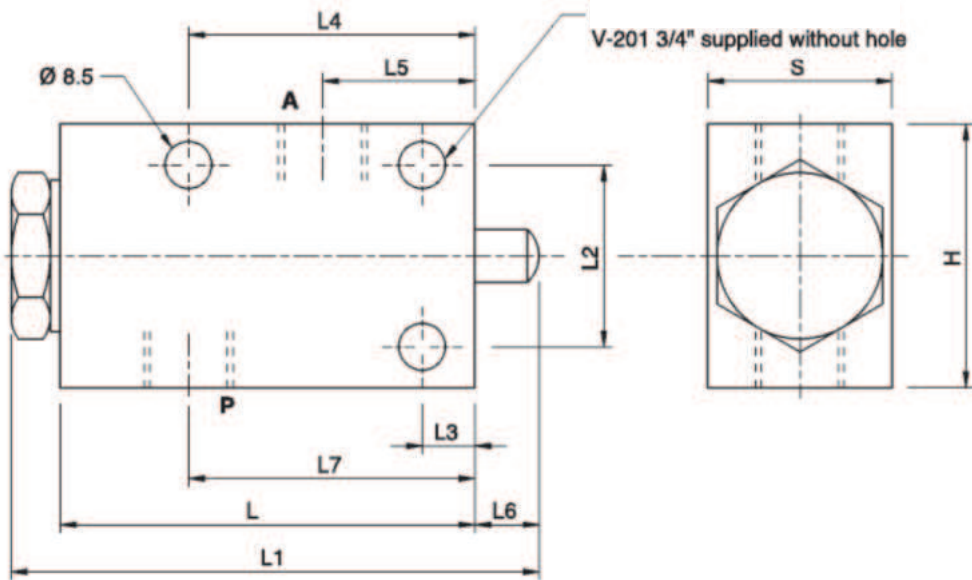
### Specifications

Type	Max.Flow	Max.Pressure
	LPM	Bar
V - 101 3/8" NC	50	350
V - 121 1/2" NC	70	350
V - 201 3/4" NC	100	350

 **Performance Curve**



 **Dimensional Drawing**



 **Ordering Details**

Code	Type	A-P	L	L1	L2	L3	L4	L5	L6	L7	H	S	Weight
		GAS	mm	mm	mm	mm	mm	mm	mm	mm	mm	mm	Kg
R-V0827	V-101 3/8" NC	G 3/8"	80	105	35	10	55	30	14	55	50	35	0.962
R-V0828	V-121 1/2" NC	G 1/2"	80	105	35	10	55	28.5	14	55	50	35	0.934
R-V0829	V-201 3/4" NC	G 3/4"	88	115	50	20	68	23	14	61	70	45	1.580

**END OF STROKE VALVES**