

# TWO PUMP "HI-LOW" UNLOADING VALVES FLANGEABLE (BASE NG6-NG10 AND NG16)



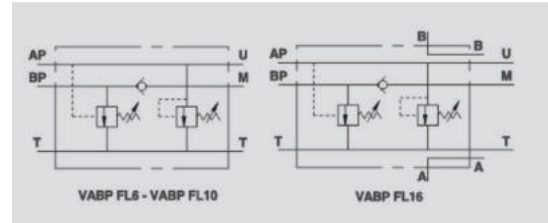
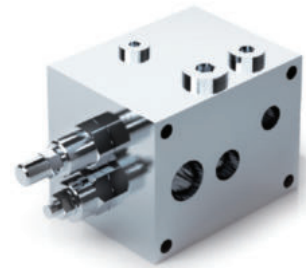
## VABP FL

**Flow Upto 120 LPM**  
**Pressure 350 Bars**

### Description & Operation

In a circuit which is supplied by 2 parallel pumps, this valve unloads the larger pump to tank once the setting has been reached. From this point the actuator will only be supplied by the smaller pump at a higher pressure, therefore consuming less energy. It is designed for direct flange mounting onto solenoid valves.

Fit the valve to the power pack by connecting BP to high flow pump, AP to the low flow pump, T to the tank and M to the eventual monometer. Flange the solenoid valve to the VABP and connect port A and B to the actuator.



Hydraulic Symbol

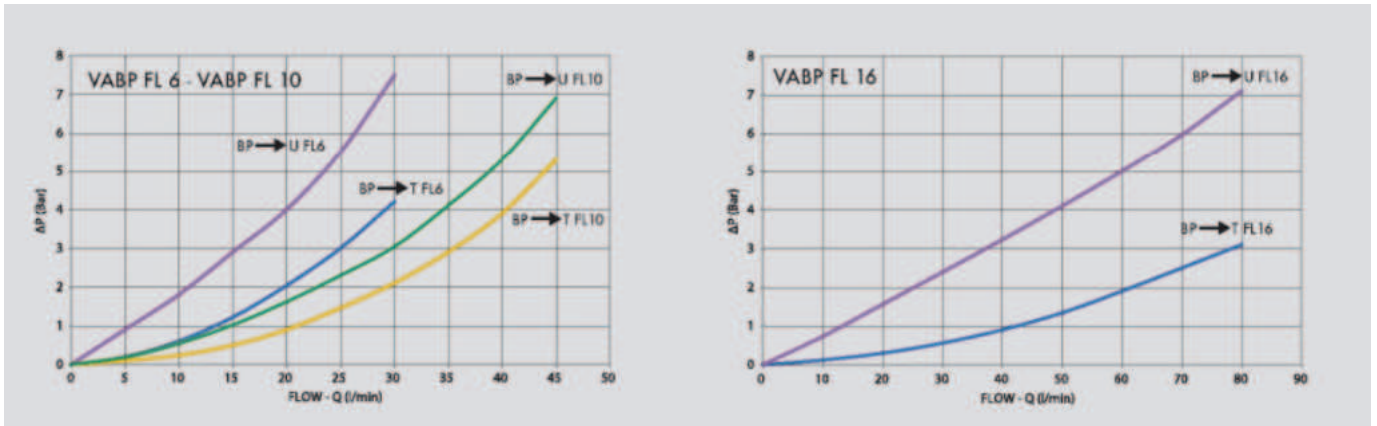
### Technical Data

Maximum Flow	120 LPM
Maximum Pressure	350 Bar
Body Material	Steel
Internal parts	Hardened and Ground steel
External Component treatment	Zn/Fe - standard (96h) / Zn/Ni (720h)
Oil Temperature	50 Deg. C
Fluids	Mineral based or synthetics with lubricating properties
Viscosity	30 cSt
Standard Sealing	NBR-Buna N
Filtration	20/18/15 ISO 4406 ( Max. Filtration admitted)
Orientation / Mounting	Inline
Weight	See Ordering details

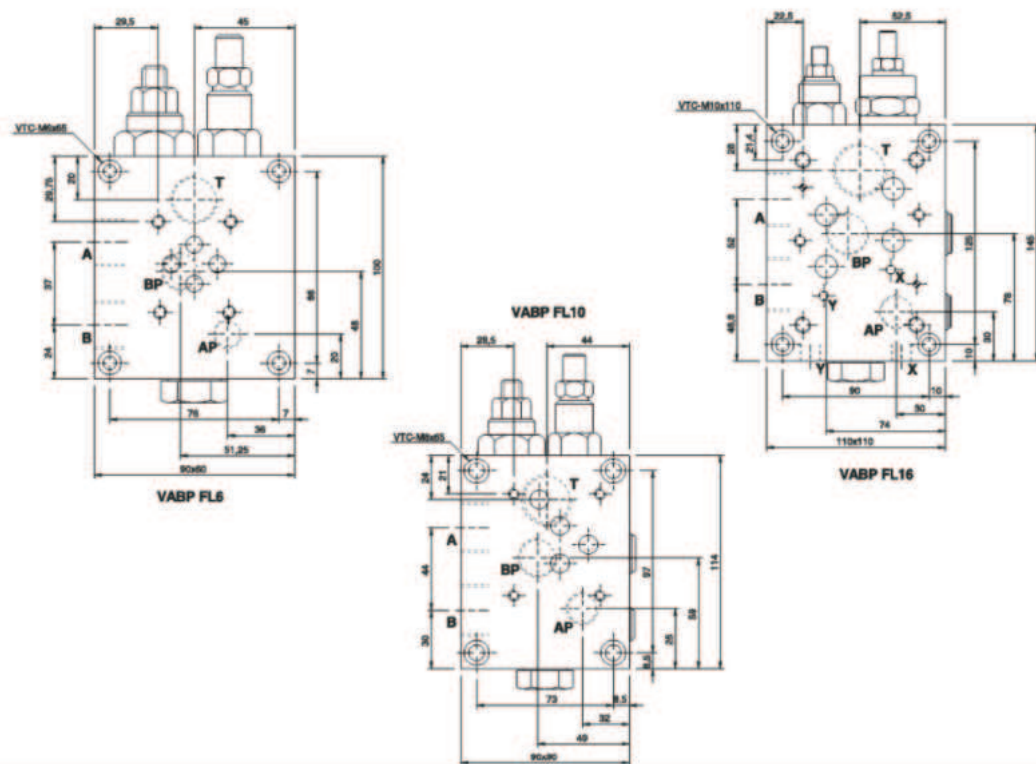
### Specifications

Type	Max.Flow			Max.Pressure	Low Pressure Max.
	AP	BP	T	Bar	Bar
VABP FL 6	20	40	60	350	100
VABP FL 10	30	50	80	350	100
VABP FL 16	40	100	120	350	110

**Performance Curve**



**Dimensional Drawing**



**Ordering Details**

Code	Type	A	B	T	AP	BP	Weight Kg
		GAS	GAS	GAS	GAS	GAS	
R-V0518	VABP FL 6	G 1/2"	G 1/2"	G 1/2"	G 1/4"	G 3/8"	3.854
R-V0515	VABP FL 10	G 3/4"	G 3/4"	G 3/4"	G 3/8"	G 1/2"	6.338
R-V0516	VABP FL 16	G 1"	G 1"	G 1"	G 1/2"	G 3/4"	11.928

**Springs Table**

VALVE	BP	AP
	Bar	Bar
VABP FL 6	20-80	50-350
VABP FL 10	20-80	50-350
VABP FL 16	20-80	50-350

HIGH LOW VALVES