

# 2 WAY FLOW DIVIDER



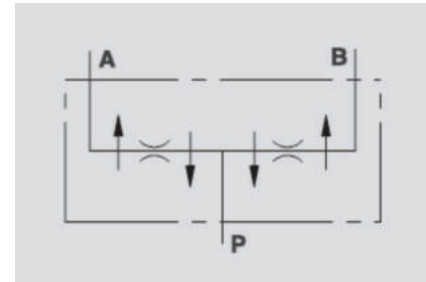
## V-EQ

**Flow Upto 80 LPM Max.**  
**Pressure 300 Bar**

### Description & Operation

These valves are used when two equal actuators, that are not mechanically coupled, supplied by the same pump and controlled by a single distributor, must move simultaneously both at input and output.

Connect P to pressure flow and A and B to the actuators.



Hydraulic Symbol

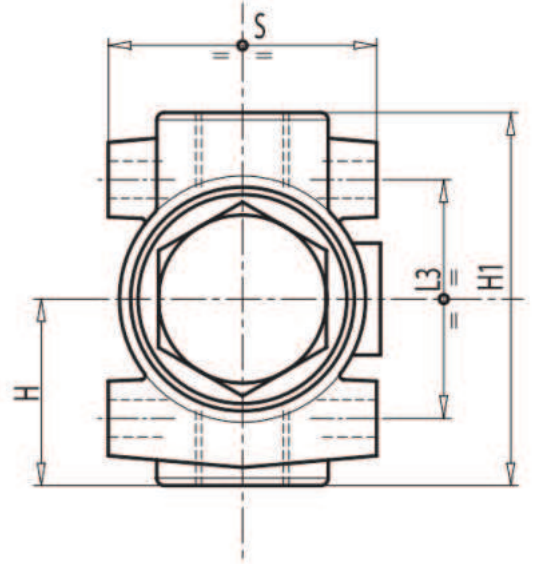
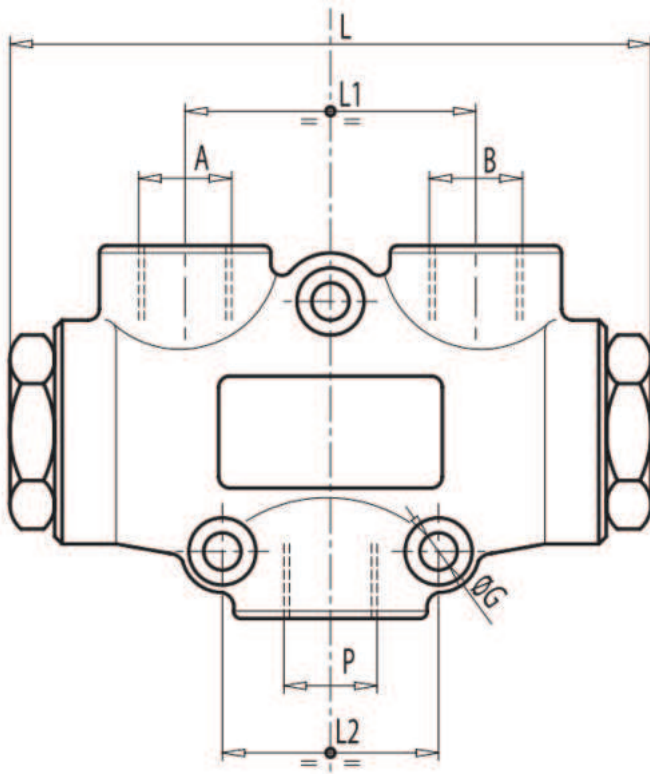
### Technical Data

Maximum Flow	80 LPM
Maximum Pressure	300 Bar
Body Material	Cast Iron
Internal Parts	Hardened and Ground steel
Oil Temperature	50 Deg. C
Fluids	Mineral based or synthetics with lubricating properties
Viscosity	30 cSt
Standard Sealing	NBR-Buna N
Filtration	20/18/15 ISO 4406 ( Max. Filtration admitted)
Orientation / Mounting	Inline
Weight	See Ordering details

### Specifications

Type	Min Flow	Max Flow	Working Pressure	Peak Pressure
	LPM	LPM	Bar	Bar
V - EQ 8	1	3	250	300
V - EQ 10	3	6	250	300
V - EQ 15	6	10	250	300
V - EQ 20	10	20	250	300
V - EQ 22	20	32	250	300
V - EQ 25	25	40	250	300
V - EQ 30	40	60	250	300
V - EQ 50	60	80	250	300

 Dimensional Drawing



 Ordering Details

Code	Type	P	A-B	L	L1	L2	L3	ØG	H	H1	S	Weight Kg
		GAS	GAS	mm	mm	mm	GAS	mm	mm	GAS	mm	
R-V1001	V - EQ 8	G 3/8"	G 3/8"	117	53	40	45	7	35	68	48	1.270
R-V1000	V - EQ 10	G 3/8"	G 3/8"	117	53	40	45	7	35	68	48	1.270
R-V1002	V - EQ 15	G 3/8"	G 3/8"	117	53	40	45	7	35	68	48	1.280
R-V1003	V - EQ 20	G 3/8"	G 3/8"	117	53	40	45	7	35	68	48	1.280
R-V1004	V - EQ 22	G 3/8"	G 3/8"	117	53	40	45	7	35	68	48	1.280
R-V1005	V - EQ 25	G 1/2"	G 3/8"	117	53	40	45	7	35	68	48	1.280
R-V1006	V - EQ 30	G 1/2"	G 3/8"	117	53	40	45	7	35	68	48	1.260
R-V1007	V - EQ 50	G 1/2"	G 3/8"	117	53	40	45	7	35	68	48	1.260