

# FLOW CONTROL VALVE EXCESS TO TANK FLANGEABLE ON DANFOSS MOTORS OMS



## RFP3 OMS

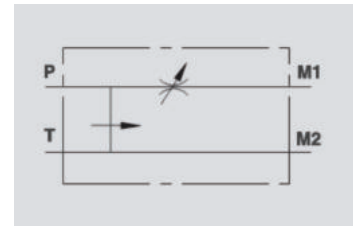
**Flow Upto 60 LPM**  
**Pressure 350 Bar**



### Description & Operation

This valve enables to keep the flow to "P" constant to a required setting, independent of pressure or inlet flow. Excess flow is drained to T (tank). Direct flange mounting for Danfoss motors type OMS provides maximum safety, very low pressure drop and a robust installation.

Connect M1 and M2 to the motor and P and T to the pressure supply



Hydraulic Symbol



### Technical Data

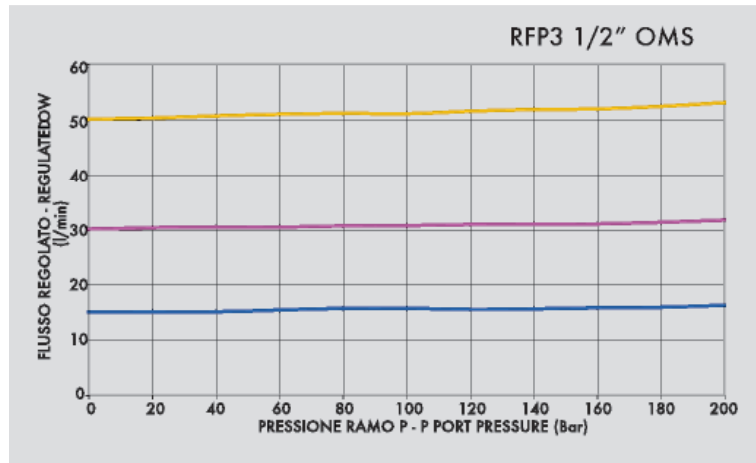
Maximum Flow	60 LPM
Max. Pressure	350 Bar
Body Material	Steel
Internal parts	Hardened and Ground steel
External Component treatment	Zn/Fe - standard (96h) / Zn/Ni (720h)
Oil Temperature	50 Deg. C
Fluids	Mineral based or synthetics with lubricating properties
Viscosity	30 cSt
Standard Sealing	NBR-Buna N
Filtration	20/18/15 ISO 4406 ( Max. Filtration admitted)
Orientation / Mounting	Inline
Weight	See Ordering details



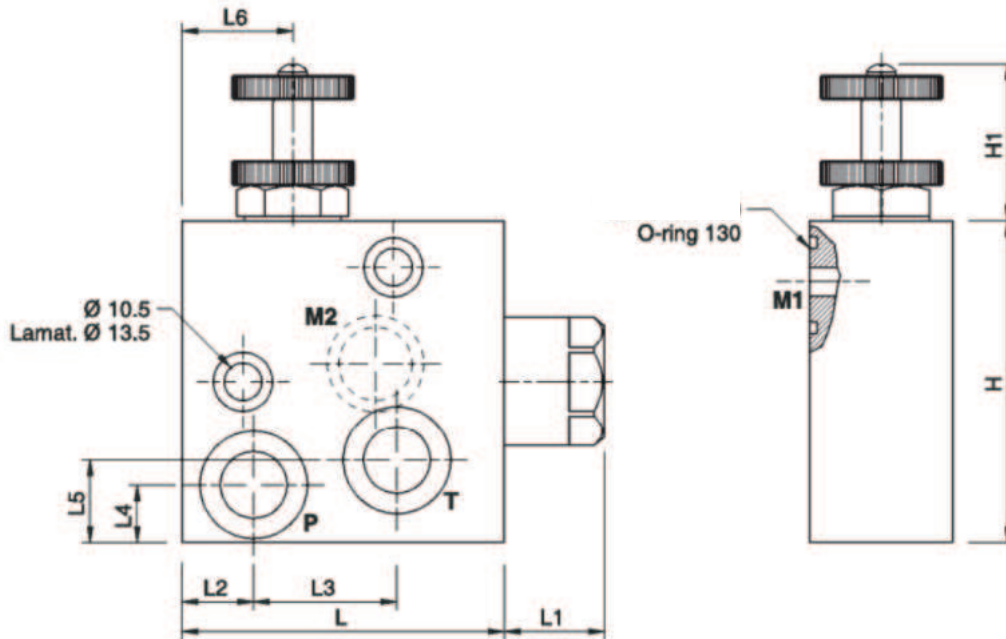
### Specifications

Type	Max Inlet Flow	Max Adjusted Flow	Max. Pressure
	LPM	LPM	Bar
RFP3 1/2" OMS	60	50	350

 Performance Curve



 Dimensional Drawing



 Ordering Details

Code	Type	P-T	L	L1	L2	L3	L4	L5	L6	H	H1	S	Weight
		GAS	mm	mm	mm	mm	mm	mm	mm	mm	mm	mm	Kg
R-VII22	RFP3 1/2" OMS	G1/2"	90	26	20	40	16	23	31	90	35	40	2.746

 On Request

- Water proof adjustment knob (CODE/P).