

FLOW CONTROL VALVE WITH EXCESS TO TANK FLAGEABLE ON DANFOSS MOTORS OMP / OMR



RFP3 OMP/OMR

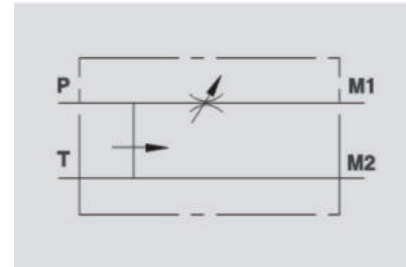
Flow Upto 60 LPM
Pressure 350 Bar



Description & Operation

This valve enables to keep "P" flow constant to a certain setting, independently of the required pressure or the inlet flow of the valve. Excess flow is drained directly in T (tank). Direct flange mounting for Danfoss motors type OMP-OMR and provides maximum safety, very low pressure drop and a robust installation.

Connect M1 and M2 to the motor and P and T to the pressure flow.



Hydraulic Symbol



Technical Data

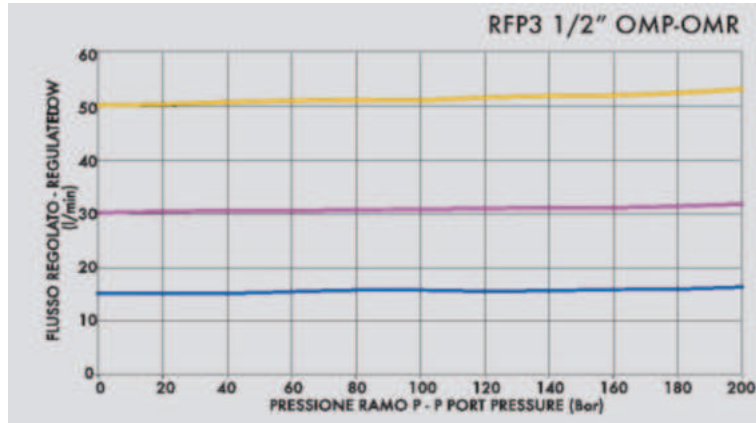
Maximum Flow	60 LPM
Maximum Pressure	350 Bar
Body Material	Steel
Intrnal parts	Hardened and Ground steel
External Component treatment	Zn/Fe - standard (96h) / Zn/Ni (720h)
Oil Temperature	50 Deg. C
Fluids	Mineral based or synthetics with lubricating properties
Viscosity	30 cSt
Standard Sealing	NBR-Buna N
Filtration	20/18/15 ISO 4406 (Max. Filtration admitted)
Orientation / Mounting	Inline
Weight	See Ordering details



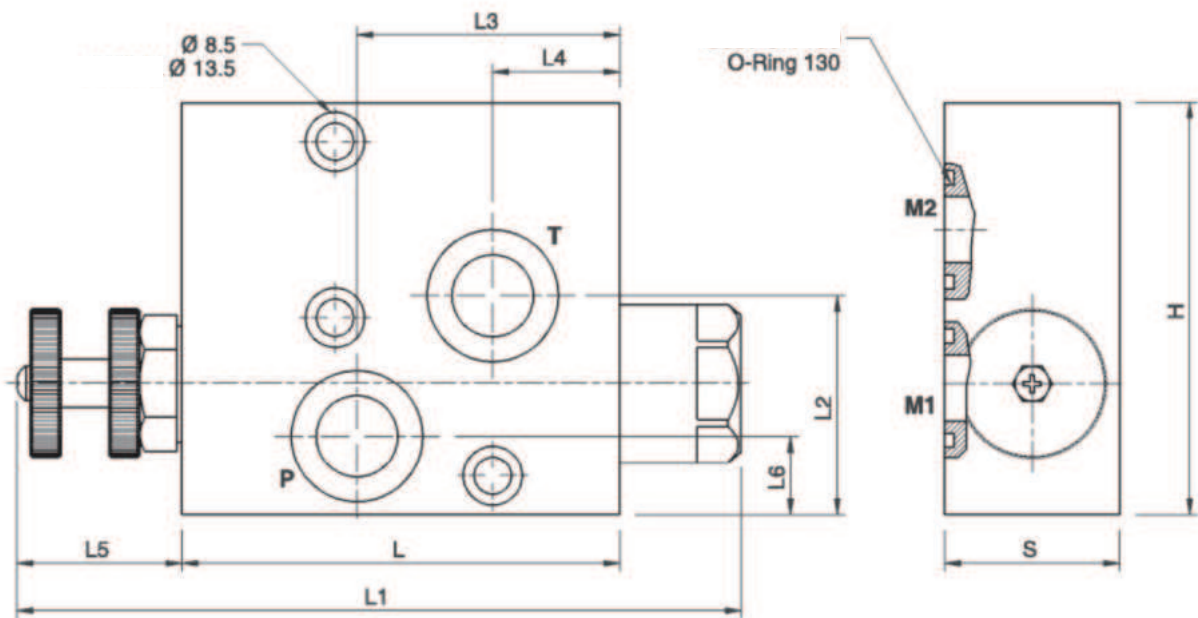
Specifications

Type	Max Inlet Flow	Max Adjusted Flow	Max.Pressure
	LPM	LPM	Bar
RFP3 1/2" OMP/OMR	60	50	350

 **Performance Curve**



 **Dimensional Drawing**



 **Ordering Details**

Code	Type	P-T	L	L1	L2	L3	L4	L5	L6	H	S	Weight
		GAS	mm	mm	mm	mm	mm	mm	mm	mm	mm	Kg
R-V 1121	RFP3 1/2" OMP/OMR	G1/2"	100	168	50	60	29	40	18	94	40	2.746

 **On Request**

- Water proof adjustment knob (CODE/P).