

3 WAY FLOW CONTROL VALVE WITH EXCESS TO TANK AND RELIEF VALVE

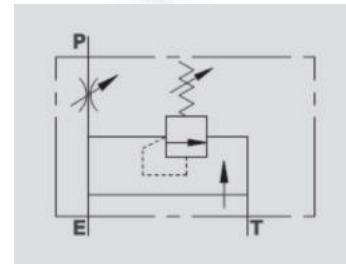


RFP3 VMP

Flow Upto 80 LPM
Pressure 350 Bar

Description & Operation

This valve enables to keep the flow to "P" constant to a required setting, independent of pressure or the inlet flow. Excess flow is drained directly in T (tank). The integrated relief valve limits the inlet pressure. Connect E to the pressure flow and P to the actuator or to a line of a hydraulic circuit where flow control is needed. Connect T to the tank to adjust flow setting rotate the hand knob after loosening the locking nut.



Hydraulic Symbol

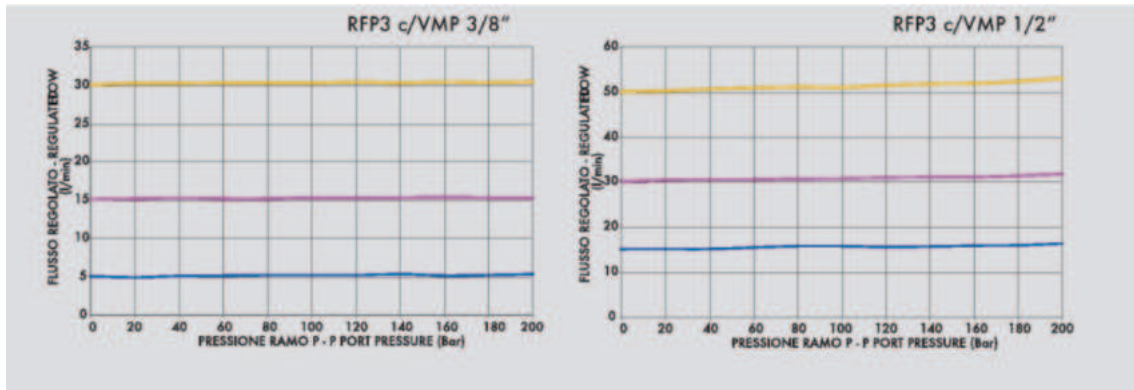
Technical Data

Maximum Flow	80 LPM
Maximum Pressure	350 Bar
Body Material	Steel
Internal parts	Hardened and Ground steel
External Component treatment	Zn/Fe - standard (96h) / Zn/Ni (720h)
Oil Temperature	50 Deg. C
Fluids	Mineral based or synthetics with lubricating properties
Viscosity	30 cSt
Standard Sealing	NBR-Buna N
Filtration	20/18/15 ISO 4406 (Max. Filtration admitted)
Orientation / Mounting	Inline
Weight	See Ordering details

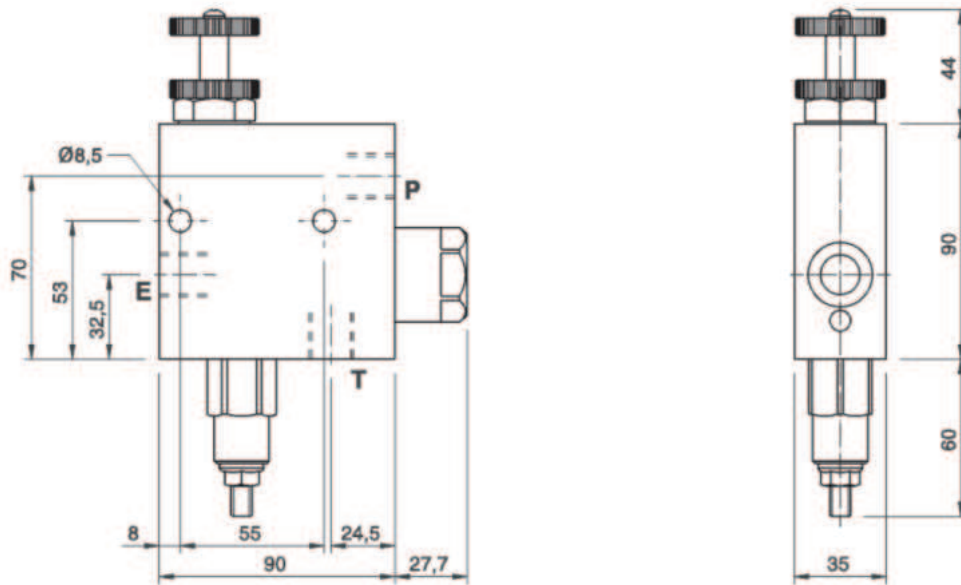
Specifications

Type	Max Inlet Flow	Max Adjusted Flow	Max Pressure
RFP3 3/8" c/VMP	60	50	350
RFP3 1/2" c/VMP	80	60	350

 **Performance Curve**



 **Dimensional Drawing**



 **Ordering Details**

Code	Type	Max Inlet Flow	Max Adjusted Flow	Max Pressure	P-E-T	Weight
					GAS	Kg
V1110/VMP	RFP3 3/8" c/VMP	60	50	350	G 3/8"	2.237
V1120/VMP	RFP3 1/2" c/VMP	80	60	350	G 1/2"	2.180

 **On Request**

- Water proof adjustment knob (CODE/P).