



# 3 WAY FLOW CONTROL VALVES

## VPR3

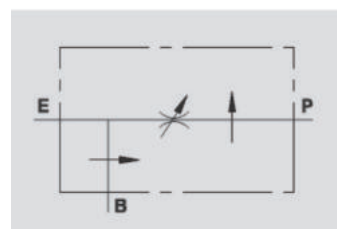
**Flow Upto 200 LPM**  
**Pressure 350 Bar**



### Description & Operation

This valve enables to keep “P” constant to a certain a required setting, independent of pressure or inlet flow. Excess flow is drained in B and it is available for a second function. Port B is insensitive to pressure changes but not to flow charges.

Connect E to the pressure flow and P to the actuator or to a line of an hydraulic circuit where flow control is needed. Connect B to the tank or to a second actuator. To adjust adjust flow setting rotate the hand knob after loosening the locking nut.



Hydraulic Symbol



### Technical Data

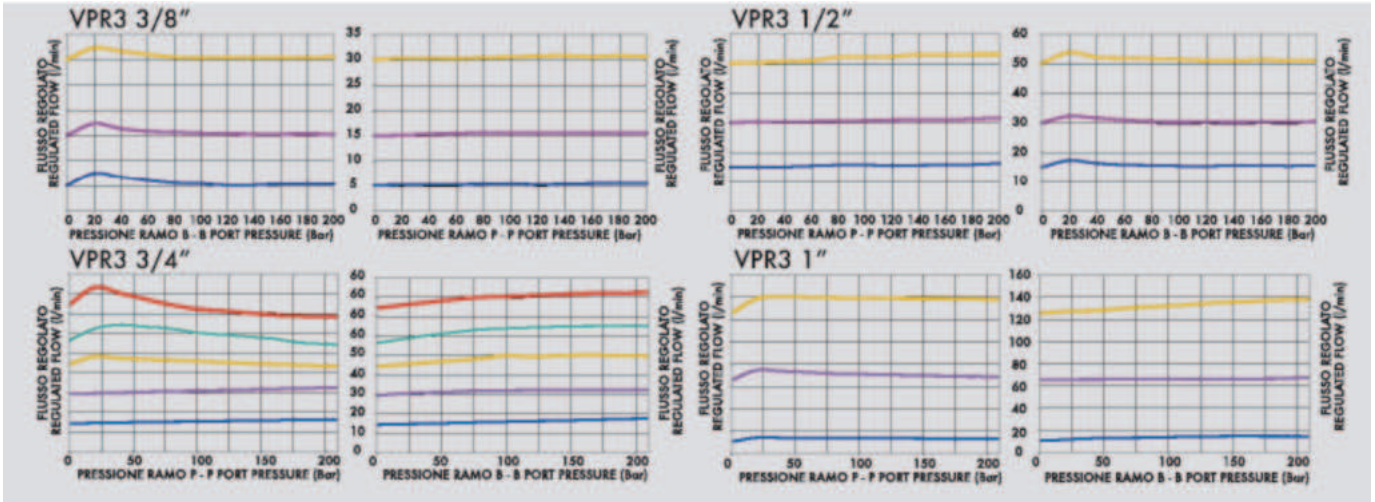
Maximum Flow	200 LPM
Max. Pressure	350 Bar
Body Material	Steel
Internal parts	Hardened and Ground steel
External Component treatment	Zn/Fe - standard (96h) / Zn/Ni (720h)
Oil Temperature	50 Deg. C
Fluids	Mineral based or synthetics with lubricating properties
Viscosity	30 cSt
Standard Sealing	NBR-Buna N
Filtration	20/18/15 ISO 4406 ( Max. Filtration admitted)
Orientation / Mounting	Inline
Weight	See Ordering details



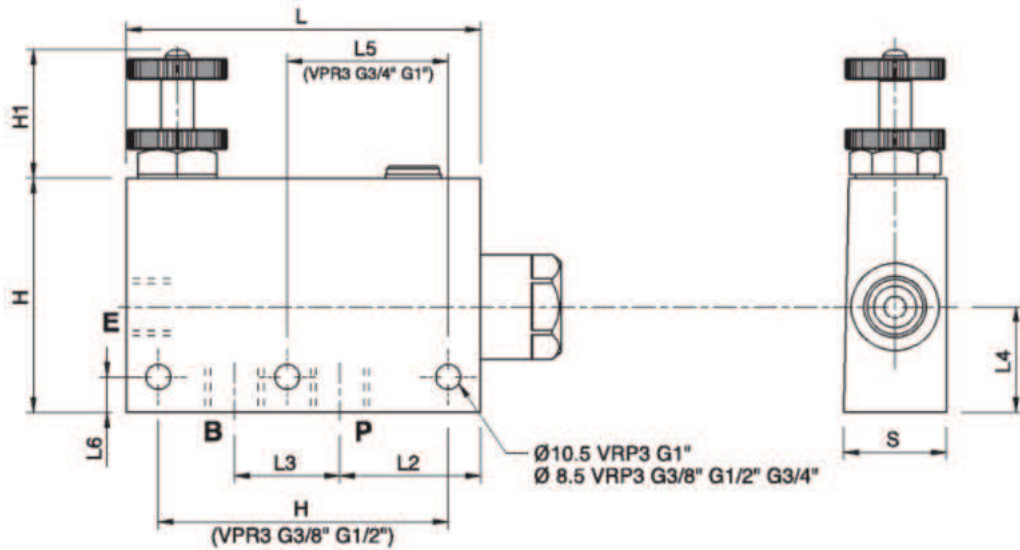
### Specifications

Type	Max Inlet Flow	Max Adjusted Flow	Max. Pressure
	LPM	LPM	Bar
VPR3 3/8"	60	50	350
VPR3 1/2"	80	60	350
VPR3 3/4"	120	100	350
VPR3 1"	200	170	350

 Performance Curve



 Dimensional Drawing



 Ordering Details

Code	Type	E-P-B	L	L1	L2	L3	L4	L5	L6	H	H1	S	Weight
		GAS	mm	mm	mm	mm	mm	mm	mm	mm	mm	mm	Kg
R-VI060	VPR3 3/8"	G3/8"	121	147	40	32	36	55	12	80	35	35	2.530
R-VI070	VPR3 1/2"	G1/2"	121	147	37	36	36	55	12	80	35	35	2.470
R-VI080	VPR3 3/4"	G3/4"	155	187	50	44	37	115	10	90	35	50	4.958
R-VI090	VPR3 1"	G1"	155	187	46	58	47	115	12	100	35	50	5.268

 On Request

- For 3/8" e 1/2" versions water proof adjustment knob (CODE/P).