

COMPENSATED 90° FLOW REGULATOR VALVES

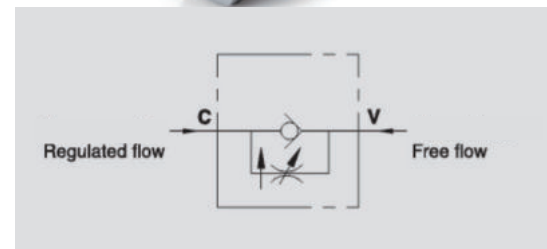


VRFU90°/C

Flow Upto 45 LPM
Pressure 250 Bar

Description & Operation

These valves are used to adjust speed of actuators in one direction; flow is free in the reverse. Internal pressure compensation allows constant speed even with varying loads. These valves are characterised by a high adjustment accuracy. Connect V to the supply C to the actuator to control; Flow is adjusted from C to V and is free in the reverse direction. Flow adjustment is done by rotating the hand knob after loosening the side locking screw. This particular configuration allows an accurate adjustment.



Hydraulic Symbol

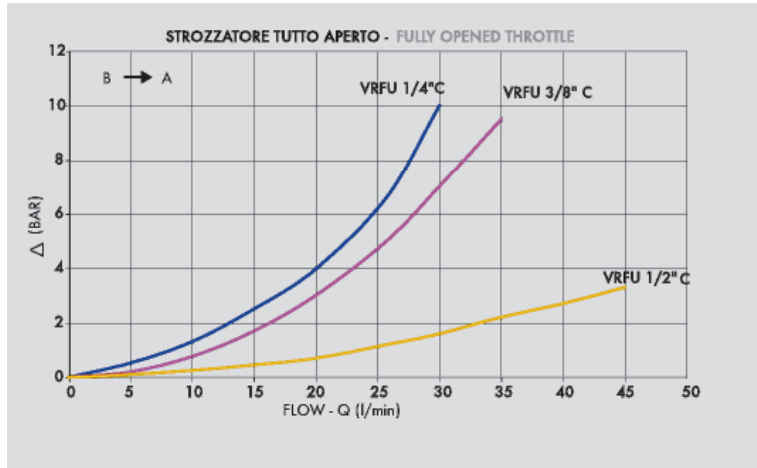
Technical Data

Maximum Flow	45 LPM
Maximum Pressure	250 Bar
Body Material	Steel
Internal parts	Hardened and Ground steel
External Component treatment	Zn/Fe - standard (96h) / Zn/Ni (720h)
Oil Temperature	50 Deg. C
Fluids	Mineral based or synthetics with lubricating properties
Viscosity	30 cSt
Standard Sealing	NBR-Buna N
Filtration	20/18/15 ISO 4406 (Max. Filtration admitted)
Orientation / Mounting	Inline
Weight	See Ordering details

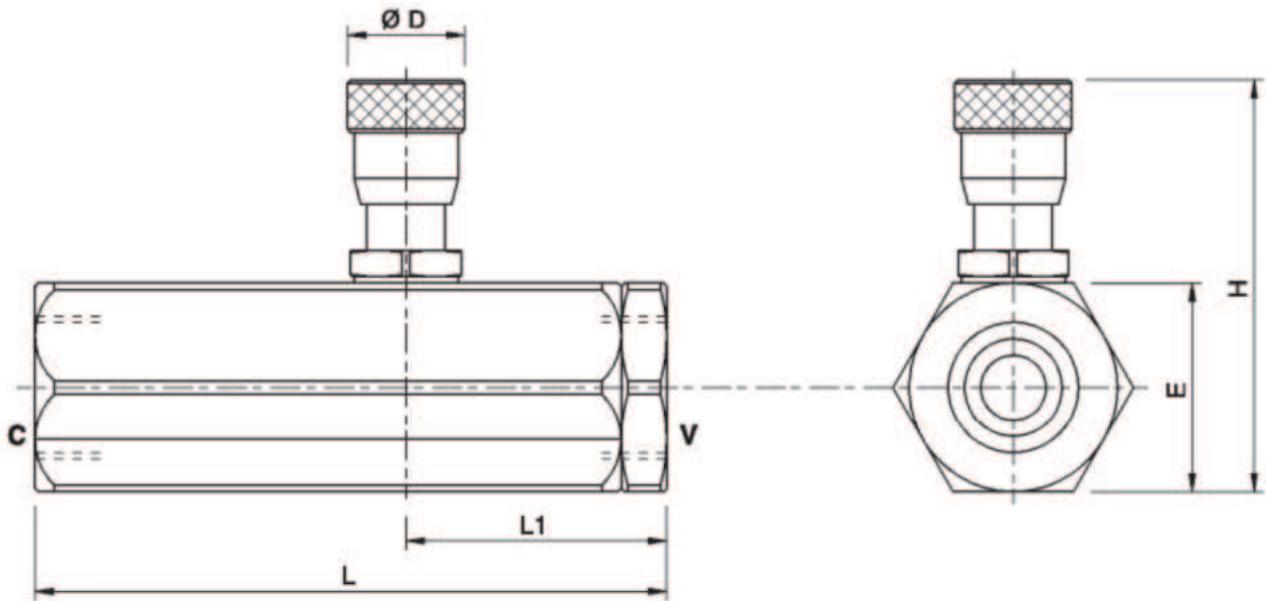
Specifications

Type	Max.Flow From C to V	Max.Flow From V to C	Max.Pressure
	LPM	LPM	Bar
VRFU 90° 1/4" COMPENSATO	17	25	250
VRFU 90° 3/8" COMPENSATO	17	30	250
VRFU 90° 1/2" COMPENSATO	28	45	250

 Performance Curve



 Dimensional Drawing



 Ordering Details

Code	Type	V-C	L	L1	D1	H Max	E	Weight
		GAS	mm	mm	mm	mm	mm	Kg
R-V0581/C	VRFU 90° 1/4" COMPENSATO	G1/4"	88	37	20	64	32	0.524
R-V0582/C	VRFU 90° 3/8" COMPENSATO	G3/8"	88	37	20	64	32	0.510
R-V0583/C	VRFU 90° 1/2" COMPENSATO	G1/2"	107	46	20	76	36	0.700