

# 90° FLOW REGULATOR VALVES



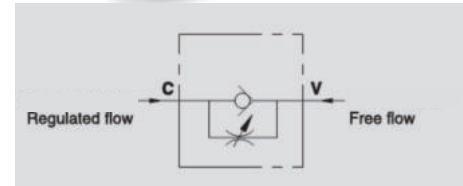
## VRFU 90°

**Flow Upto 110 LPM**  
**Pressure 350 Bar**



### Description & Operation

These valve are used to adjust speed of actuators in one directions. Flow is free in the reverse. Pressure compensation is not provided, flow rate depends on pressure and oil viscosity. These valve are characterised by a high adjustment accuracy. Connect V to the pressure flow and C to the actuator to control, flow is adjusted from C to V and is free in the reverse direction. When used on actuators with double pilot check valves, VRFU 90 has to be mounted between the actuator and the double pilot check valve. Flow adjustment is done by rotating the plastic hand knob after loosening the side locking screw. This particulars configuration allows an accurate adjustment.



Hydraulic Symbol



### Technical Data

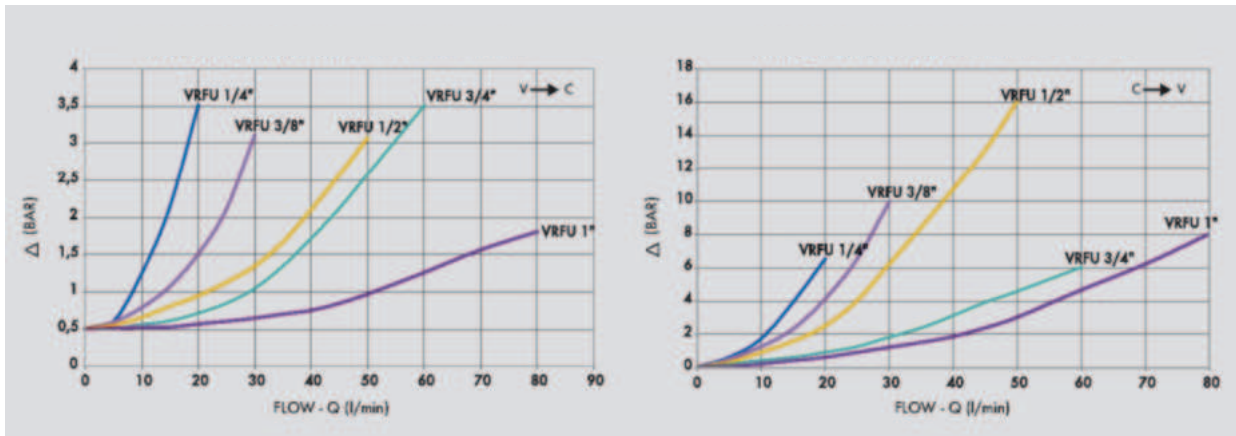
Maximum Flow	110 LPM
Maximum Pressure	350 Bar
Body Material	Steel
Internal parts	Hardened and Ground steel
External Component treatment	Zn/Fe - standard (96h) / Zn/Ni (720h)
Oil Temperature	50 Deg. C
Fluids	Mineral based or synthetics with lubricating properties
Viscosity	30 cSt
Standard Sealing	NBR-Buna N
Filtration	20/18/15 ISO 4406 ( Max. Filtration admitted)
Orientation / Mounting	Inline
Weight	See Ordering details



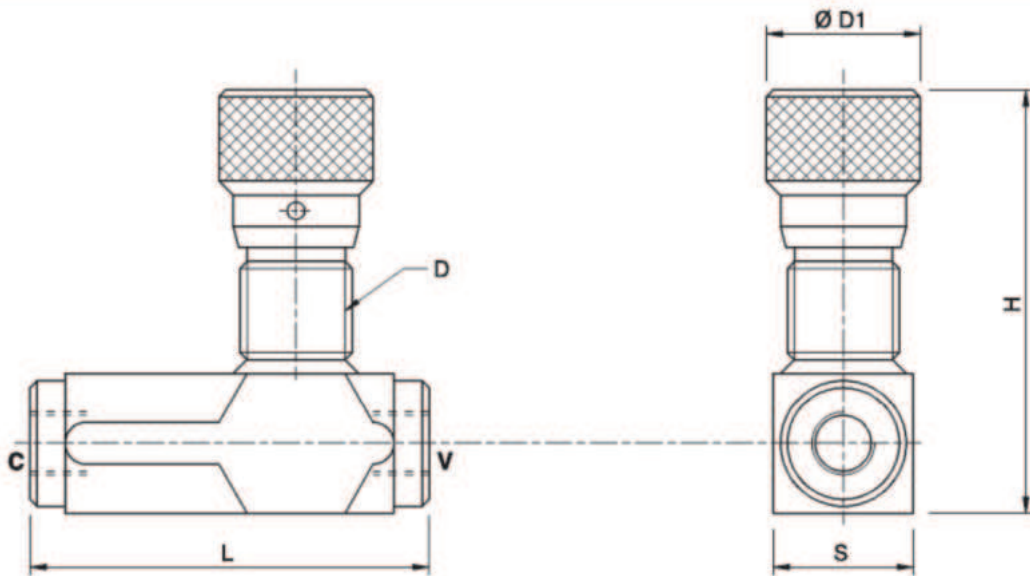
### Specifications

Type	Max.Flow	Max.Pressure	Cr.Pressure
	LPM	Bar	Bar
VRFU 90° 1/4"	15	350	0.5
VRFU 90° 3/8"	30	350	0.5
VRFU 90° 1/2"	50	350	0.5
VRFU 90° 3/4"	80	320	0.5
VRFU 90° 1"	110	300	0.5

 Performance Curve



 Dimensional Drawing



 Ordering Details

Code	Type	V-C	L mm	D mm	D1 mm	H mm	S mm	Weight Kg
		GAS						
R-V0581	VRFU 90° 1/4"	G1/4"	73	M22X1.5	32	82	25	0.416
R-V0582	VRFU 90° 3/8"	G3/8"	83	M22X1.5	32	82	25	0.420
R-V0583	VRFU 90° 1/2"	G1/2"	94	M22X1.5	32	87	30	0.582
R-V0588	VRFU 90° 3/4"	G3/4"	118	M35X1.5	42	108.5	40	1.360
R-V0576	VRFU 90° 1"	G1"	135	M35X1.5	42	126	40	1.390

 On Request

- Aluminum hand knob (CODE/AL).