

# SHUTTLE VALVE



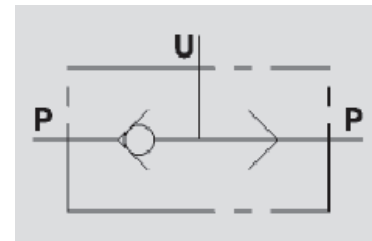
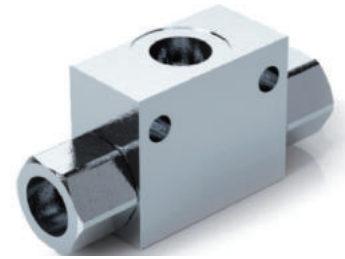
## VU2P

**Flow Upto 150 LPM**  
**Pressure 350 Bar**



### Description & Operation

This valve is used to select higher pressure between two pressure lines.  
Connect ports P to the 2 lines to select and U to the line to feed.



Hydraulic Symbol



### Technical Data

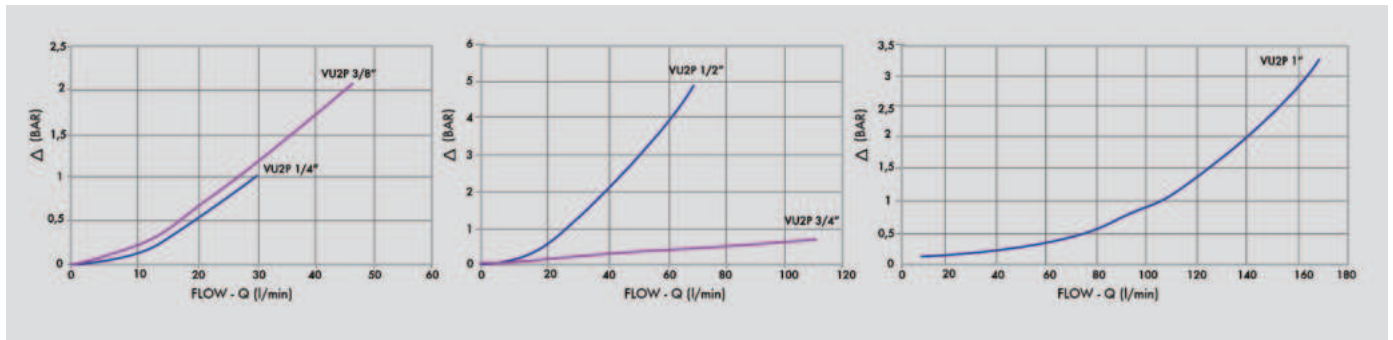
Maximum Flow	150 LPM
Maximum Pressure	350 Bar
Body Material	Steel
Internal parts	Hardened and Ground steel
External Component treatment	Zn/Fe - standard (96h) / Zn/Ni (720h)
Oil Temperature	50 Deg. C
Fluids	Mineral based or synthetics with lubricating properties
Viscosity	30 cSt
Standard Sealing	NBR-Buna N
Filtration	20/18/15 ISO 4406 ( Max. Filtration admitted)
Orientation / Mounting	Inline
Weight	See Ordering details



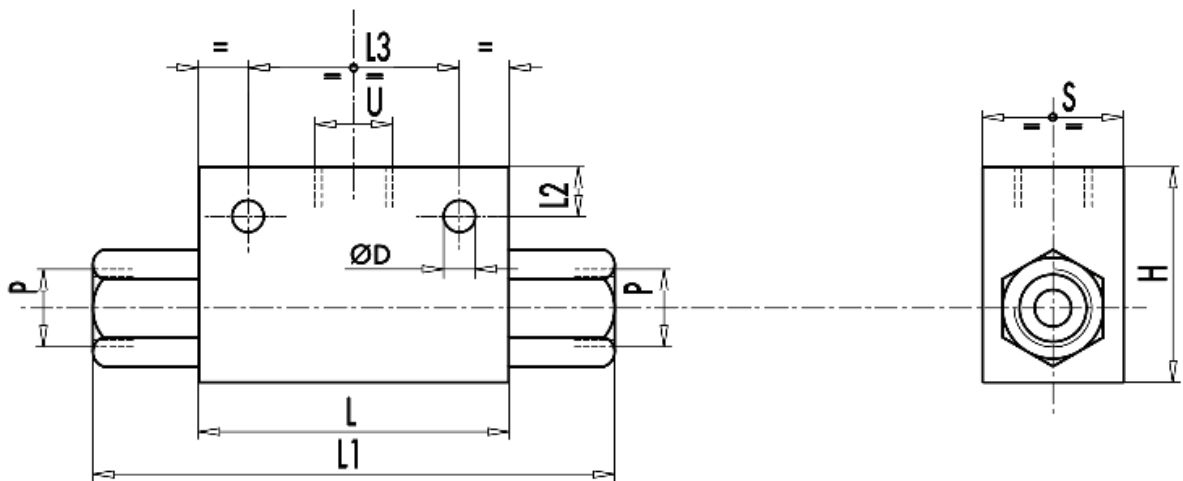
### Specifications

Type	Max.Flow	Max.Pressure
	LPM	Bar
VU2P 1/4"	30	350
VU2P 3/8"	45	350
VU2P 1/2"	70	350
VU2P 3/4"	110	350
VU2P 1"	150	300

 Performance Curve



 Dimensional Drawing



 Ordering Details

Code	Type	U-P	L	L1	L2	L3	H	S	ØD	Weight
		GAS	mm	mm	mm	mm	mm	mm	mm	kg
R-V0666	VU2P 1/4"	G 1/4"	60	104	9	44	40	30	8.5	0.560
R-V0668	VU2P 3/8"	G 3/8"	60	104	9	44	40	30	8.5	0.530
R-V0670	VU2P 1/2"	G 1/2"	60	104	12	44	50	30	8.5	0.652
R-V0680	VU2P 3/4"	G 3/4"	80	127	12	44	58	35	8.5	1.086
R-V0685	VU2P 1"	G 1	80	126	11	60	80	50	10.5	2.172

CHECK VALVES