

# MALE/MALE CHECK VALVE



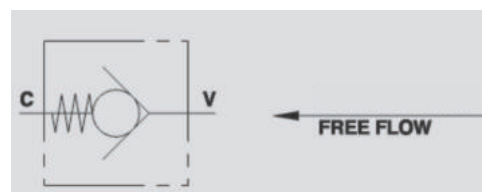
## VU MM

**Flow Upto 650 LPM**  
**Pressure 350 Bar**

### Description & Operation

Check valves allow free flow in one direction and blocks the flow in the reverse direction, used to keep a hydraulic system pressurised.

Connect V to the pressure flow and C to the actuator flow is free from V to C and blocked in the reverse direction.



Hydraulic Symbol

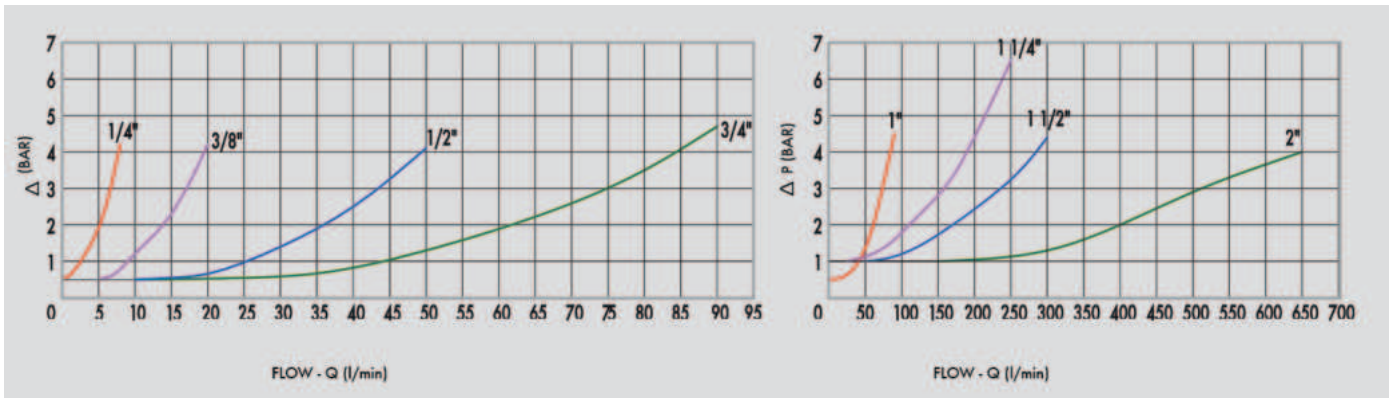
### Technical Data

Maximum Flow	650 LPM
Maximum Pressure	350 Bar
Body Material	Steel
Internal parts	Hardened and Ground steel
External Component treatment	Zn/Fe - standard (96h) / Zn/Ni (720h)
Oil Temperature	50 Deg. C
Fluids	Mineral based or synthetics with lubricating properties
Viscosity	30 cSt
Standard Sealing	NBR-Buna N
Filtration	20/18/15 ISO 4406 ( Max. Filtration admitted)
Orientation / Mounting	Inline
Weight	See Ordering details

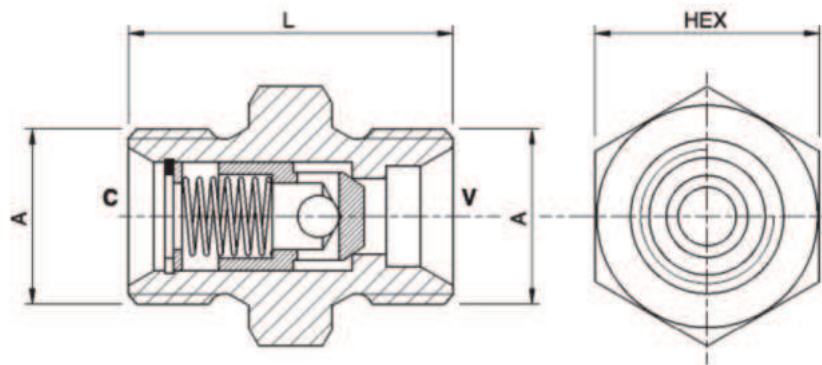
### Specifications

Type	Max.Flow	Max.Pressure	Cr.Pressure
	LPM	Bar	Bar
VU MM 1/4"	8	350	1
VU MM 3/8"	20	350	1
VU MM 1/2"	50	350	1
VU MM 3/4"	90	350	1
VU MM 1"	150	320	1
VU MM 1 1/4"	240	320	1
VU MM 1 1/2"	300	320	1
VU MM 2"	650	320	1

 **Performance Curve**



 **Dimensional Drawing**



 **Ordering Details**

Code	Type	A	L	HEX	Weight
		GAS	mm	mm	Kg
R-V0594/*	VU MM 1/4"	G 1/4"	32	19	0.033
R-V0604/*	VU MM 3/8"	G 3/8"	34	22	0.053
R-V0614/*	VU MM 1/2"	G 1/2"	39	27	0.142
R-V0624/*	VU MM 3/4"	G 3/4"	45	32	0.288
R-V0634/*	VU MM 1"	G 1"	55	40	0.594
R-V0637/*	VU MM 1 1/4"	G 1 1/4"	70	50	0.910
R-V0638/*	VU MM 1 1/2"	G 1 1/2"	86	55	0.910
R-V0639/*	VU MM 2"	G 2"	102	70	1.800

 **Springs Table**

Code	1 Bar	3 Bar	6 Bar	9 Bar
VU MM 1/4"	V0594/1	V0594/3	V0594/6	/
VU MM 3/8"	V0604/1	V0604/3	V0594/6	/
VU MM 1/2"	V0614/1	V0614/3	V0614/6	/
VU MM 3/4"	V0624/1	V0624/3	V0624/6	/
VU MM 1"	V0634/1	/	V0634/6	V0634/9
VU MM 1" 1/4	V0637	/	V0637/6	V0637/9
VU MM 1" 1/2	V0638	/	V0638/6	V0638/9
VU MM 2"	V0639/1	/	V0639/6	V0639/9

**CHECK VALVES**