

DIRECT ACTING PRESSURE REDUCING VALVES WITH CHECK VALVES



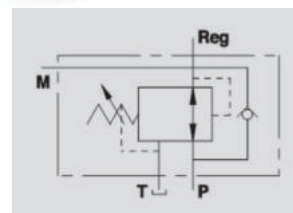
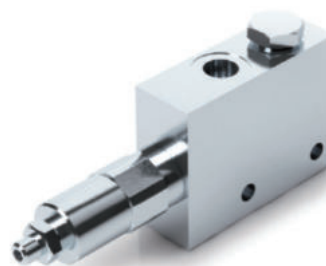
VRPRL

Flow Upto 30 LPM
Pressure 350 Bar

Description & Operation

This valve maintains a constant downstream pressure irrespective of the upstream pressure the check valve allows for the free flow of oil in the reverse direction.

Connect P to the main circuit, Reg. to the circuit where you want the reduced to the tank. pressure and T to the tank.



Hydraulic Symbol

Technical Data

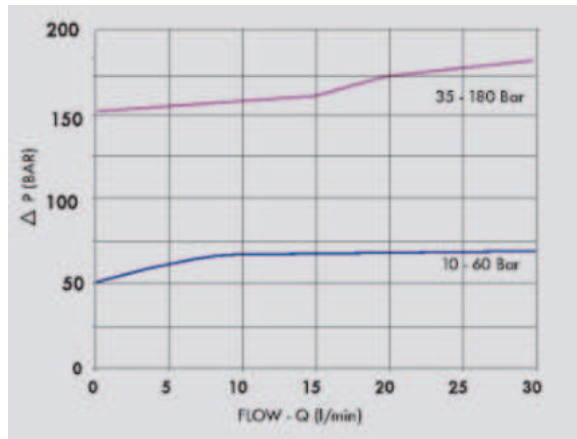
Maximum Flow	30 LPM
Maximum Pressure	350 Bar
Body Material	Steel
Internal parts	Hardened and Ground steel
External Component treatment	Zn/Fe - standard (96h) / Zn/Ni (720h)
Oil Temperature	50 Deg. C
Fluids	Mineral based or synthetics with lubricating properties
Viscosity	30 cSt
Standard Sealing	NBR-Buna N
Filtration	20/18/15 ISO 4406 (Max. Filtration admitted)
Orientation / Mounting	Inline
Weight	See Ordering details

Specifications

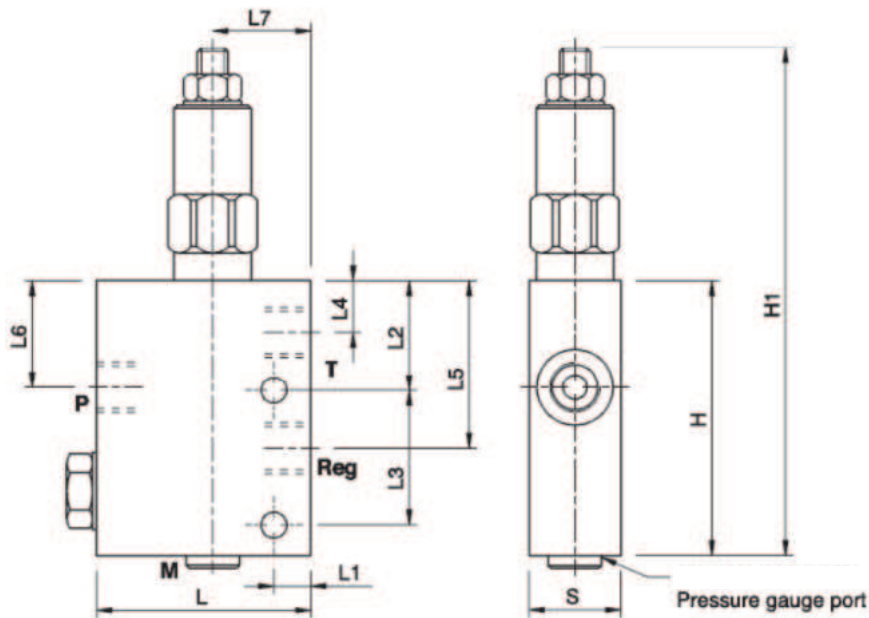
Type	Max.Flow	Max.Pressure
	LPM	Bar
VRPRL 3/8"	30	350
VRPRL 1/2"	30	350

*000= Please specify the desired setting range. See the table.

Performance Curve



Dimensional Drawing



Ordering Details

Code	Type	P-T-Reg	L	L1	L2	L3	L4	L5	L6	L7	H	H1	S	Weight
		GAS	mm	mm	mm	mm	mm	mm	mm	mm	mm	mm	mm	mm
R-V0705/000*	VRPRL 3/8"	3/8"	70	12	36	44	17	55	35	32	90	168	30	1.530
R-V0707/000*	VRPRL 1/2"	1/2"	70	12	36	44	17	55	35	32	90	168	30	1.468

Springs Table

Code	Setting Range
	Bar
COD/060	10 - 60
COD/180	35 - 180 standard

Adjustment

CODE/V	Handknob
CODE/PP	Arranged for sealing cap
CODE/P	Sealing cap

PRESSURE REDUCING VALVES