

CROSS LINE RELIEF VALVE WITH ANTI-CAVITATION WITH SINGLE ADJUSTMENT



VAA/RU

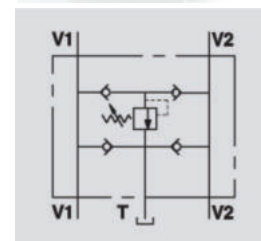
Flow Upto 60 LPM
Pressure 350 Bar

Description & Operation

This valve is used to limited pressure of bothe ports of a hydraulic motor a an actuator. The check valves avoid cavitation during braking of an over-running load. It is recommended to fit a check valve on her outlet of the valve (T) with a minimum crancking pressure of 3 bar.

Connect V1 and V2 ports to the motor, the others V1 and V2 ports to the supply and T to the tank.

Mounting the valve by the actuator is highly recommended in order to avoid pressure drops and for a fast response.



Hydraulic Symbol

Technical Data

| | |
|------------------------------|---|
| Maximum Flow | 60 LPM |
| Maximum Pressure | 350 Bar |
| Body Material | Steel |
| Internal parts | Hardened and Ground steel |
| External Component treatment | Zn/Fe - standard (96h) / Zn/Ni (720h) |
| Oil Temperature | 50 Deg. C |
| Fluids | Mineral based or synthetics with lubricating properties |
| Viscosity | 30 cSt |
| Standard Sealing | NBR-Buna N |
| Filtration | 20/18/15 ISO 4406 (Max. Filtration admitted) |
| Orientation / Mounting | Inline |
| Weight | See Ordering details |

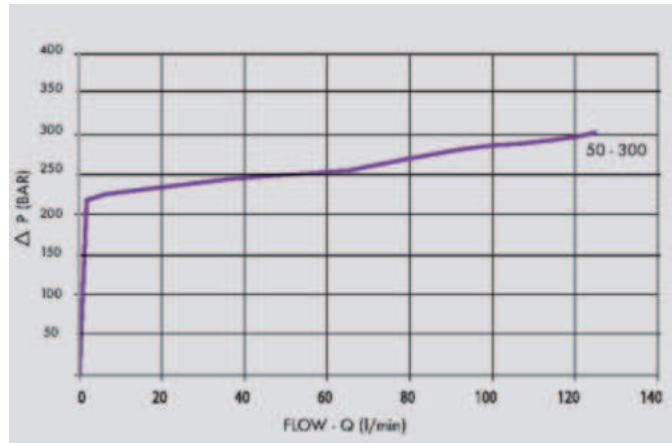
Specifications

| Type | Max.Flow | Presure Range | Max. Pressure |
|-------------|----------|---------------|---------------|
| | Bar | Bar | Bar |
| VAA/RU 1/2" | 60 | 50 - 300 | 350 |

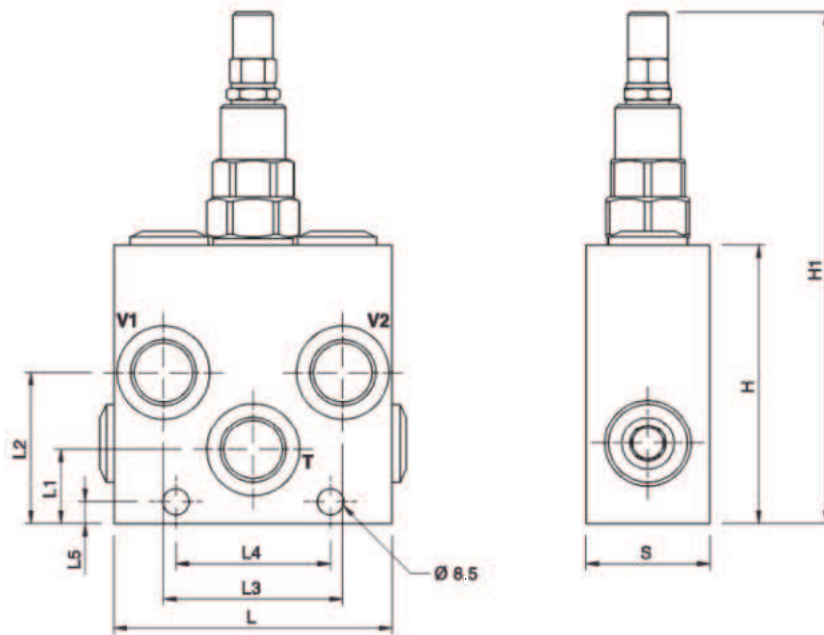
On Request

- Different setting range (see the table)
- Other setting available (CODE/T000 please specify the desired setting)

 **Performance Curve**



 **Dimensional Drawing**



 **Ordering Details**

| Code | Type | T | L | L1 | L2 | L3 | L4 | L5 | H | HI | S | Weight |
|------------|-------------|--------|----|----|----|----|----|----|----|-----|----|--------|
| | | GAS | mm | mm | mm | mm | mm | mm | mm | mm | mm | Kg |
| R-V0508/RU | VAA/RU 1/2" | G 1/2" | 90 | 24 | 49 | 58 | 50 | 7 | 90 | 165 | 40 | 2.182 |

 **Adjustment**

| | |
|---------|--------------------------|
| CODE/V | Handknob |
| CODE/PP | Arranged for sealing cap |
| CODE/P | Sealing cap |

DUAL CROSS RELIEF VALVES