



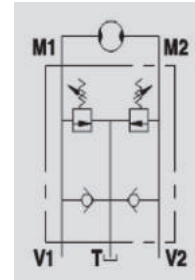
## VAUAC 2

**Flow Upto 110 LPM**  
**Pressure 350 Bar**

### Description & Operation

This valve is used to block pressure to a certain setting in the 2 ports of an hydraulic motor: when it reaches pressure setting, the valve opens allowing pressure relief in T. The relief valve valve provides overload protection in a fast and accurate way and cavitation is avoid thanks to the check valve It's suggested to mount set check valve to the tank WAY OUT (T)

Connect M1 and M2 to the motor and P1 and P2 to the pressure flow. Connect T to the tank. Mounting by the actuator is highly recommended in order to avoide pressure drops and get a prompt duty.



Hydraulic Symbol

### Technical Data

Maximum Flow	110 LPM
Maximum Pressure	350 Bar
Body Material	Steel
Internal parts	Hardened and Ground steel
External Component treatment	Zn/Fe - standard (96h) / Zn/Ni (720h)
Oil Temperature	50 Deg. C
Fluids	Mineral based or synthetics with lubricating properties
Viscosity	30 cSt
Standard Sealing	NBR-Buna N
Filtration	20/18/15 ISO 4406 ( Max. Filtration admitted)
Orientation / Mounting	Inline
Weight	See Ordering details

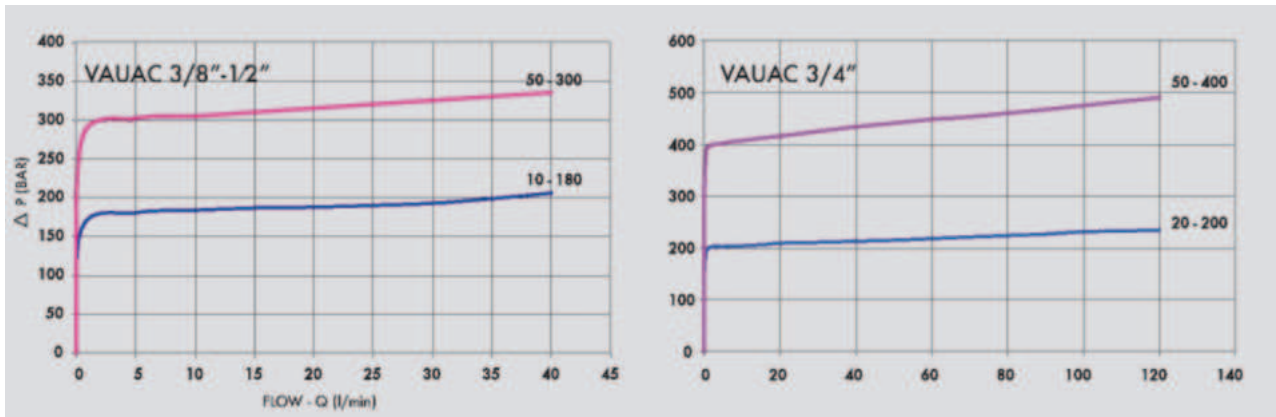
### Specifications

Type	Max.Flow	Max. Pressure
	Bar	Bar
VAUAC 2 3/8"	45	350
VAUAC 2 1/2"	70	350
VAUAC 2 3/4"	110	350

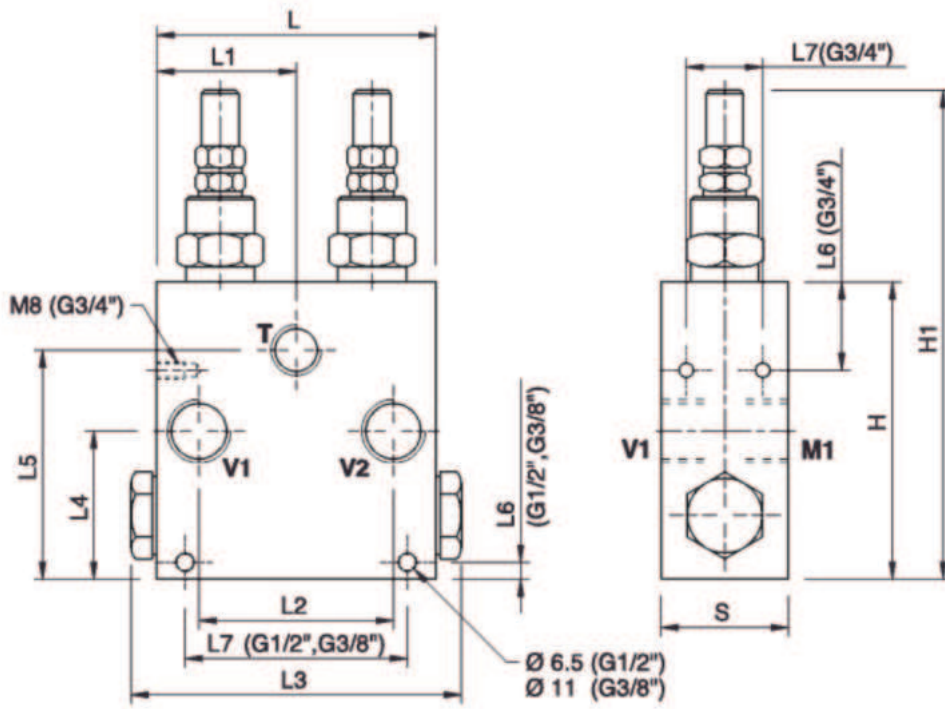
### On Request

- Different setting range (see the table)
- Other setting available (CODE/T000 please specify the desired setting)

**Performance Curve**



**Dimensional Drawing**



**Ordering Details**

Code	Type	T GAS	L mm	L1 mm	L2 mm	L3 mm	L4 mm	L5 mm	L6 mm	L7 mm	H mm	H1 mm	S mm	Weight Kg
V0507	VAUAC 2 3/8"	G 3/8"	100	50	64	/	19	37	10	0	55	121.5	50	1.989
V0508	VAUAC 2 1/2"	G 1/2"	80	40	42	102	48	96	8	50	112	174	35	2.254
V0510	VAUAC 2 3/4"	G 1/2"	110	55	64	132	58	23	36	38	120	182	50	2.534

**Springs Table**

Setting Range	Pressure Increase	Max. Pressure
Bar	Bar/Turn	Bar
(VAUAC 3/8" .1/2")		
10 - 180	30	90
80- 300	50	150
(VAUAC 3/4")		
20 - 200	40	160
50- 400	80	180

**Adjustment**

CODE/V	Handknob
CODE/PP	Arranged for sealing cap
CODE/P	Sealing cap

DUAL CROSS RELIEF VALVES