

# DUAL CROSS LINE RELIEF VALVE FLANGEABLE ON DANFOSS MOTORS OMS



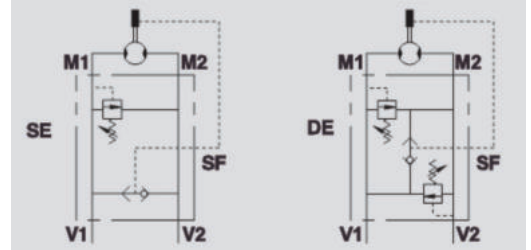
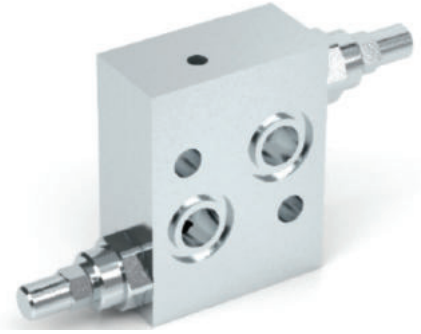
## VAU OMS

**Flow Upto 50 LPM**  
**Pressure 350 Bar**

### Description & Operation

Made up by two cross port relief valves, these valves are used to limit the pressure in the both (DE) or one (SE) ports of a hydraulic motor to a certain setting. Direct flange mounting for Danfoss motors type low OMS provides maximum safety, very low pressure drop and a robust installation.

M1 and M2 directly to the motor and connect ports V1 and V2 to the supply.



Hydraulic Symbol

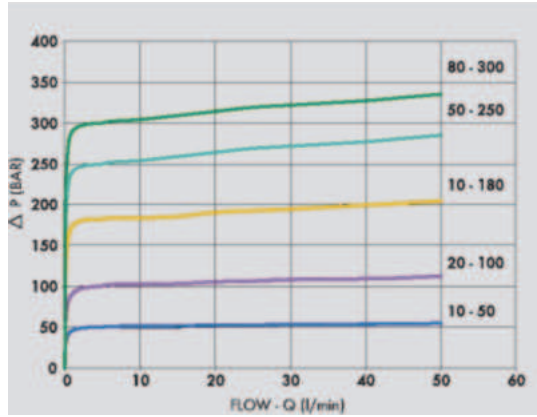
### Technical Data

Maximum Flow	50 LPM
Maximum Pressure	350 Bar
Body Material	Steel
Internal parts	Hardened and Ground steel
External Component treatment	Zn/Fe - standard (96h) / Zn/Ni (720h)
Oil Temperature	50 Deg. C
Fluids	Mineral based or synthetics with lubricating properties
Viscosity	30 cSt
Standard Sealing	NBR-Buna N
Filtration	20/18/15 ISO 4406 ( Max. Filtration admitted)
Orientation / Mounting	Inline
Weight	See Ordering details

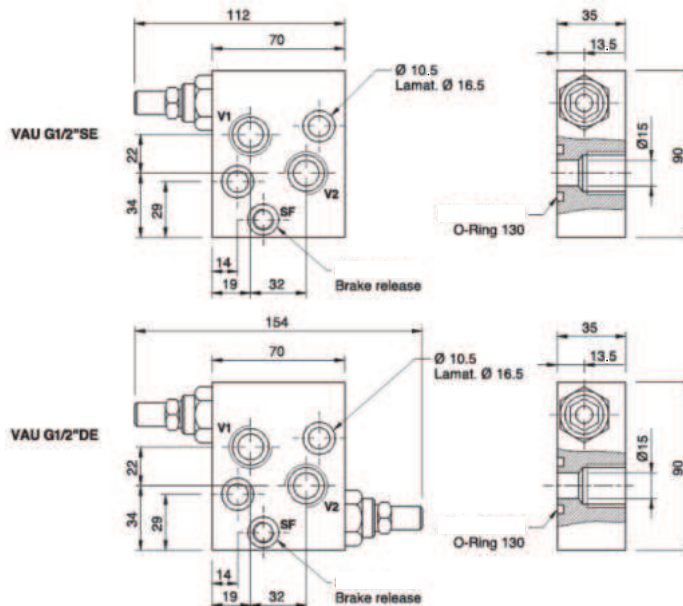
### Specifications

Type	Max.Flow	Max. Pressure
	LPM	Bar
VAU 1/2" OMS	50	350
VAU 1/2" OMS SF	50	350
VAU 1/2" OMS SE	50	350
VAU 1/2" OMS SE SF	50	350
VAU 1/2" OMS AC	50	350

 **Performance Curve**



 **Dimensional Drawing**



 **Ordering Details**

Code	Type	V1-V2	SF	Weight
		GAS	GAS	Kg
VO490	VAU 1/2" OMS	G 1/2"	-	1.326
VO490/SF	VAU 1/2" OMS SF	G 1/2"	G 1/4"	1.326
VO489	VAU 1/2" OMS SE	G 1/2"	-	1.462
VO489/SF	VAU 1/2" OMS SE SF	G 1/2"	G 1/4"	1.389
VO490/AC	VAU 1/2" OMS AC	G 1/2"	-	1.417

 **Springs Table**

Setting Range	Pressure Increase	Standard Setting
Bar	Bar/Tab	Bar
10 - 50*	7	30
20 - 100*	12	75
30 - 180 standard	30	90
50 - 250	45	130
80 - 300	50	150

 **Adjustment**

CODE/V	Handknob
CODE/PP	Arranged for sealing cap
CODE/P	Sealing cap

 **On Request**

- Different setting range (see the table)
- Other setting available (CODE/T000 please specify the desired setting)

**DUAL CROSS RELIEF VALVES**