

DOUBLE RELIEF VALVES



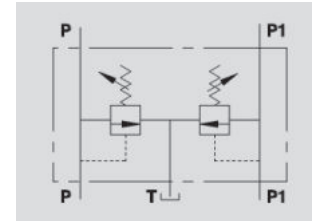
VMPD

Flow Upto 70 LPM
Pressure 350 Bar

Description & Operation

Made up by 2 relief valves, the double relief valve provides overload protection in 2 hydraulic lines with 1 tank connection. It allows 2 different pressure settings.

Connect P and P1 to the pressure flow, the remaining P1 and P ports to the 2 lines to be controlled but in the reverse way; connect T to the tank.



Hydraulic Symbol

Technical Data

Maximum Flow	70 LPM
Maximum Pressure	350 Bar
Body Material	Steel
Internal parts	Hardened and Ground steel
External Component treatment	Zn/Fe - standard (96h) / Zn/Ni (720h)
Oil Temperature	50 Deg. C
Fluids	Mineral based or synthetics with lubricating properties
Viscosity	30 cSt
Standard Sealing	NBR-Buna N
Filtration	20/18/15 ISO 4406 (Max. Filtration admitted)
Orientation / Mounting	Inline
Weight	See Ordering details

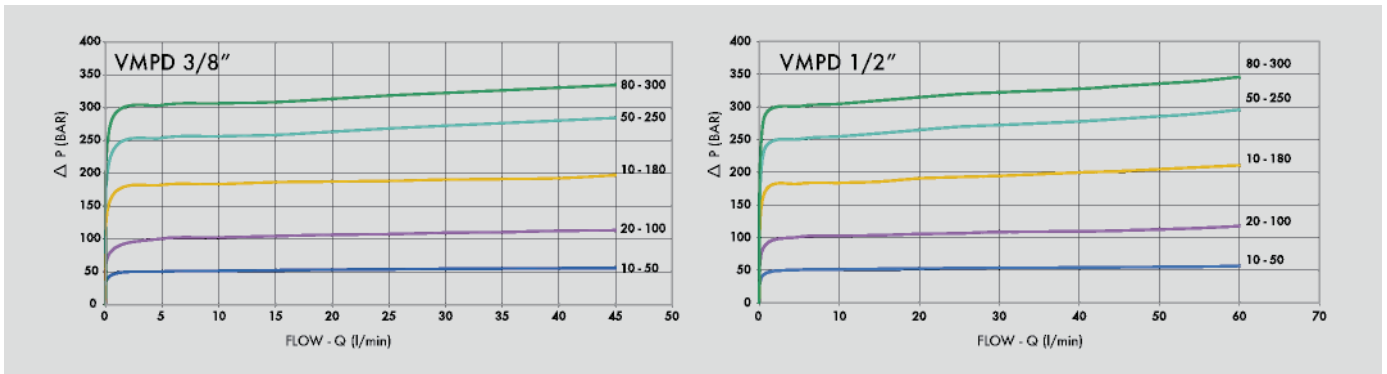
Specifications

Type	Max.Flow	Max.Presure
	LPM	Bar
VMPD 3/8"	45	350
VMPD 1/2"	70	350

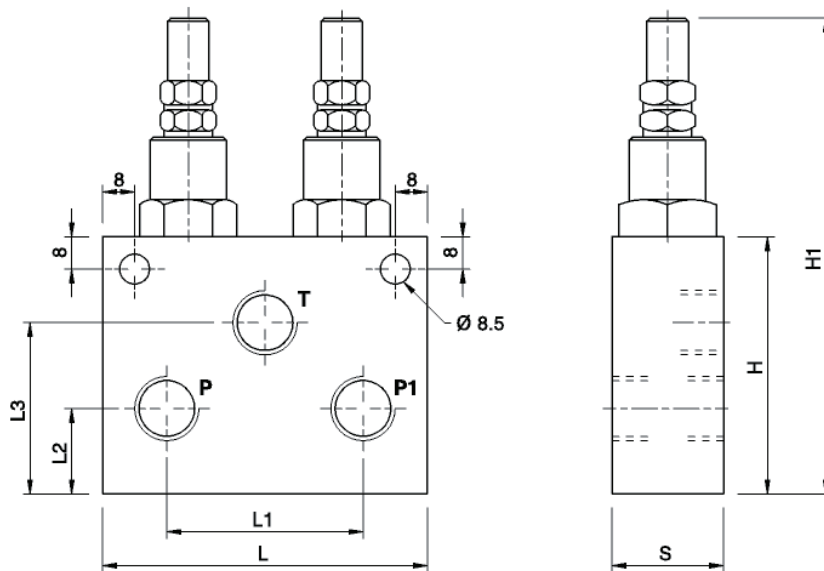
On Request

- Different setting range (see the table)
- Other setting available (CODE/T000 please specify the desired setting)

Performance Curve



Dimensional Drawing



Ordering Details

Code	Type	P-T	L	L1	L2	L3	H	H1	S	Weight
		GAS	MM	mm	mm	mm	mm	mm	mm	Kg
R-V0735/000*	VMPD 3/8"	G 3/8"	98	62	24	46	70	132	35	1.508
R-V0734/000*	VMPD 1/2"	G 1/2"	98	65	24	46	70	132	35	1.482

000* = please specify the desired setting range. See the table below.

SpringsTable

Setting Range	Pressure Increase	Standard Setting
Bar	Bar/Turn	Bar
10 - 50*	7	30
20 - 100	12	75
10 - 180 standard	30	90
50 - 250	45	130
80 - 300	50	150

*For setting less than 70 Bar: Q = 12 LPM

Adjustment

CODE/V	Handknob
CODE/PP	Arranged for sealing cap
CODE/P	Sealing cap