

DIFFERENTIAL AREA RELIEF VALVES



VMPP

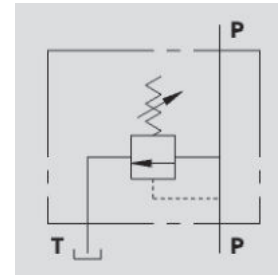
Flow Upto 160 LPM
Pressure 350 Bar



Description & Operation

The relief valve provides overload protection in a fast and accurate way: when it reaches pressure setting, the valve opens allowing pressure relief in order not to exceed this setting. The valve differential opening is slower than the standard one, but the setting is more consistent to changing flow rate.

Connect circuit port with pressure to P and tank port to T. The 1" size is supplied with double exit T (1 exit can be capped according with mounting needs.)



Hydraulic Symbol

Technical Data

Maximum Flow	160 LPM
Maximum Pressure	350 Bar
Body Material	Steel
Internal parts	Hardened and Ground steel
External Component treatment	Zn/Fe - standard (96h) / Zn/Ni (720h)
Oil Temperature	50 Deg. C
Fluids	Mineral based or synthetics with lubricating properties
Viscosity	30 cSt
Standard Sealing	NBR-Buna N
Filtration	20/18/15 ISO 4406 (Max. Filtration admitted)
Orientation / Mounting	Inline
Weight	See Ordering details

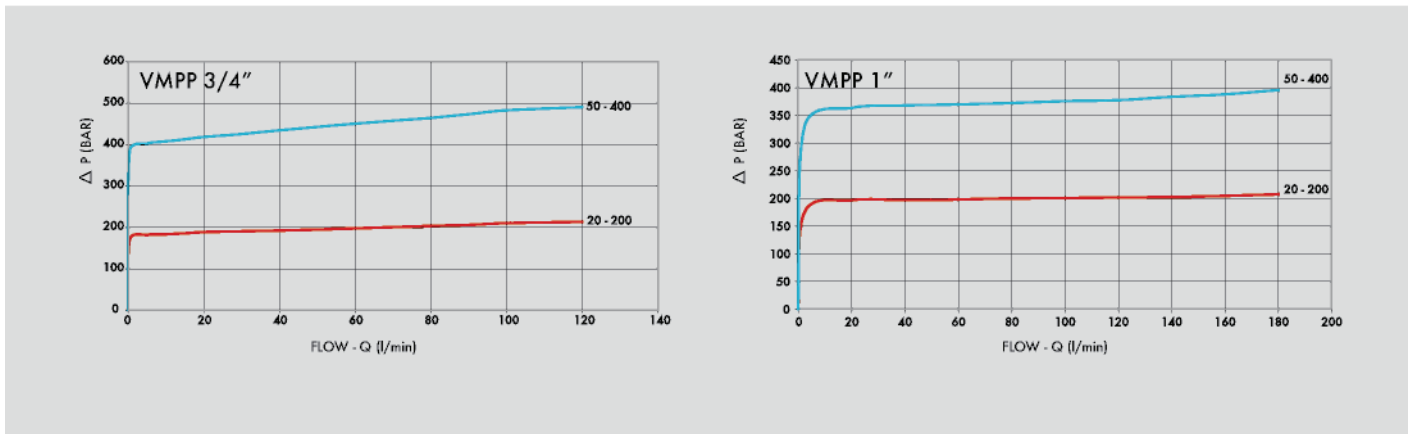
Specifications

Type	Max.Flow	Max.Presure
	LPM	Bar
VMPP 3/4"	120	350
VMPP 1"	160	350

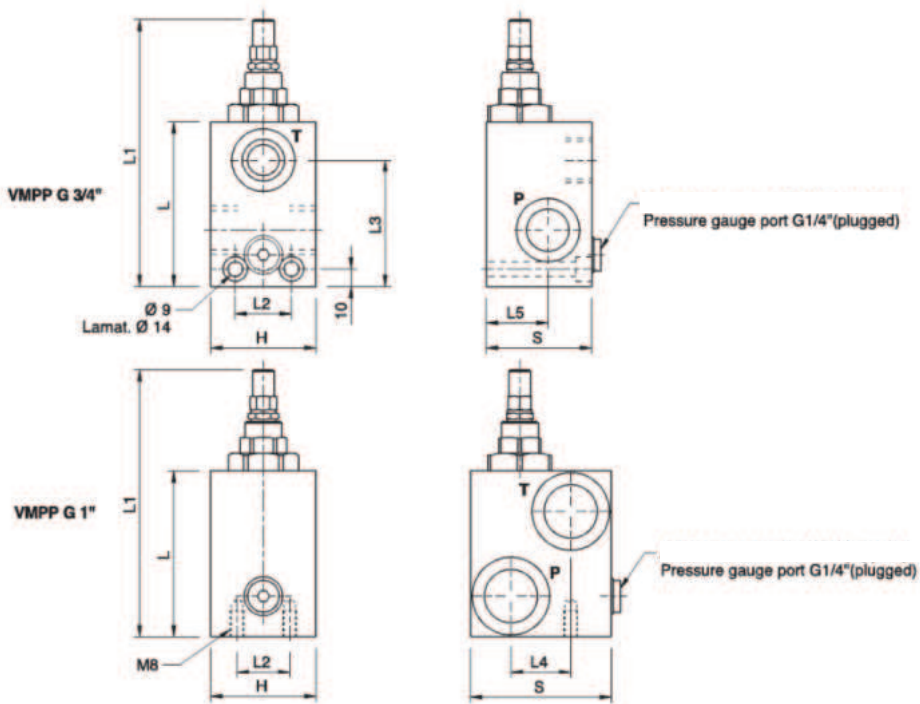
On Request

- Different setting range (see the table)
- Other setting available (CODE/T000 please specify the desired setting)

Performance Curve



Dimensional Drawing



Ordering Details

Code	Type	P-T	L	L1	L2	L3	L4	L5	H	S	Weight
		GAS	MM	mm	mm	mm	mm	mm	mm	mm	Kg
R-V0725/000*	VMPP 3/4"	G 3/4"	94	156	32	70	35	32	60	60	2.200
R-V0735/000*	VMPP 1"	G 1"	94	156	30	71	34	23	60	80	2.870

000*= please specify the desired setting range. See the table below.

SpringsTable

Setting Range	Pressure Increase	Standard Setting
Bar	Bar/Turn	Bar
20 - 200	40	160
50 - 400 standard	80	180

Adjustment

CODE/V	Handknob
CODE/PP	Arranged for sealing cap
CODE/P	Sealing cap

RELIEF VALVES