

DIFFERENTIAL AREA IN LINE MOUNTING RELIEF VALVE



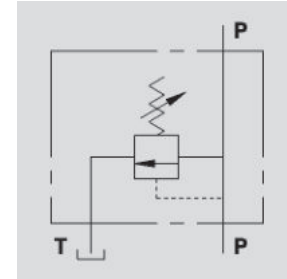
VMPP L D5

Flow Upto 120 LPM
Pressure 350 Bar



Description & Operation

The relief valve provides overload protection in a hydraulic circuit: when it reaches the pressure setting, the valve opens allowing pressure relief so that it does not exceed this setting. The valve differential opening is slower than the standard one, but the setting is more consistent to changing flow rate. Connect circuit port with pressure to P and tank port to T. Port P is reversible.



Hydraulic Symbol

Technical Data

Maximum Flow	120 LPM
Maximum Pressure	350 Bar
Body Material	Steel
Internal parts	Hardened and Ground steel
External Component treatment	Zn/Fe - standard (96h) / Zn/Ni (720h)
Oil Temperature	50 Deg. C
Fluids	Mineral based or synthetics with lubricating properties
Viscosity	30 cSt
Standard Sealing	NBR-Buna N
Filtration	20/18/15 ISO 4406 (Max. Filtration admitted)
Orientation / Mounting	Inline
Weight	See Ordering details

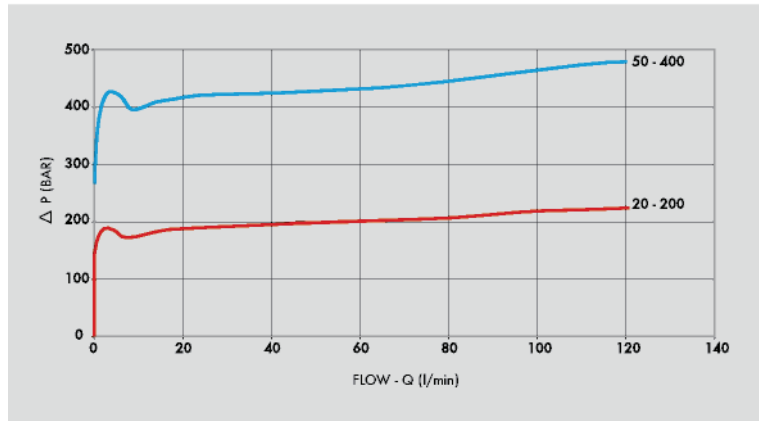
Specifications

Type	Max.Flow	Max.Presure
	LPM	Bar
VMPP L D5 3/4"	120	350

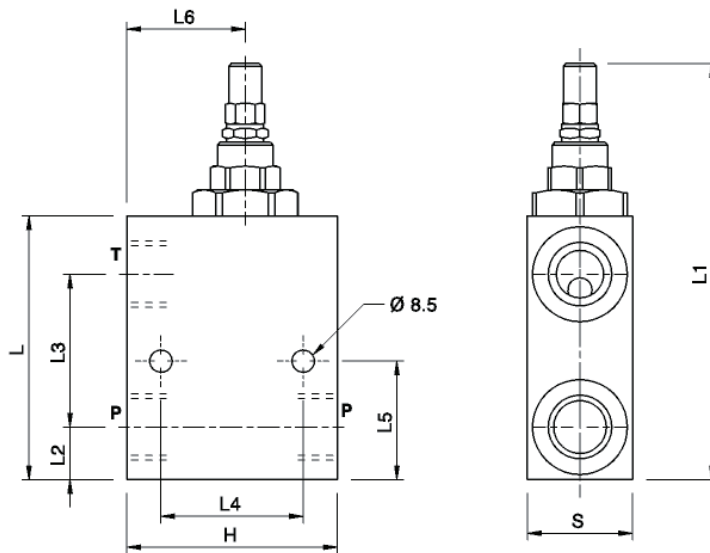
On Request

- Different setting range (see the table)
- Other setting available (CODE/T000 please specify the desired setting)

 **Performance Curve**



 **Dimensional Drawing**



 **Ordering Details**

Code	Type	P-T	L	L1	L2	L3	L4	L5	L6	H	S	Weight
		GAS	mm	mm	mm	mm	mm	mm	mm	mm	mm	Kg
V0726/000*	VMPP L D5 3/4"	G 3/4"	100	160	20	58	54	45	45	80	40	2.200

000*= please specify the desired setting range. See the table below.

 **SpringsTable**

Setting Range	Pressure Increase	Standard Setting
Bar	Bar/Turn	Bar
20 - 200	40	160
50 - 400 standard	80	180

 **Adjustment**

CODE/V	Handknob
CODE/PP	Arranged for sealing cap
CODE/P	Sealing cap