

IN LINE MOUNTING RELIEF VALVE



VMP L D5

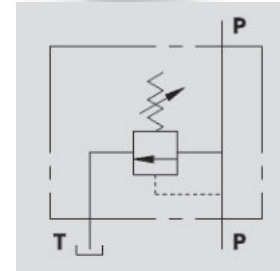
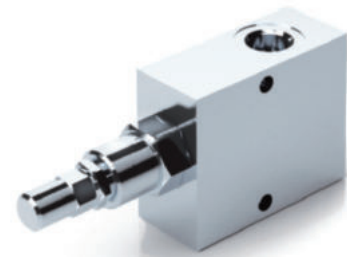
Flow Upto 90 LPM
Pressure 350 Bar

Description & Operation

The relief valve limits the maximum pressure in a circuit to the valve's setting.

When the circuit pressure reaches the setting, the valve opens and stops the circuit pressure going any higher.

Connect circuit port with pressure to P and tank port to T. Port P is reversible.



Hydraulic Symbol

Technical Data

Maximum Flow	90 LPM
Maximum Pressure	350 Bar
Body Material	Steel
Internal parts	Hardened and Ground steel
External Component treatment	Zn/Fe - standard (96h) / Zn/Ni (720h)
Oil Temperature	50 Deg. C
Fluids	Mineral based or synthetics with lubricating properties
Viscosity	30 cSt
Standard Sealing	NBR-Buna N
Filtration	20/18/15 ISO 4406 (Max. Filtration admitted)
Orientation / Mounting	Inline
Weight	See Ordering details

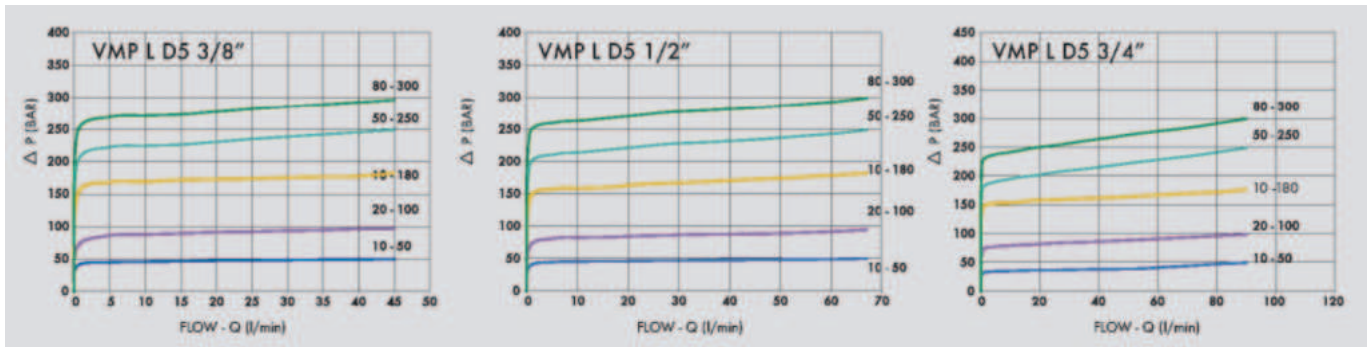
Specifications

Type	Max.Flow	Max.Pressure
	LPM	Bar
VMP L D5 3/8"	45	350
VMP L D5 1/2"	70	350
VMP L D5 3/4"	90	350

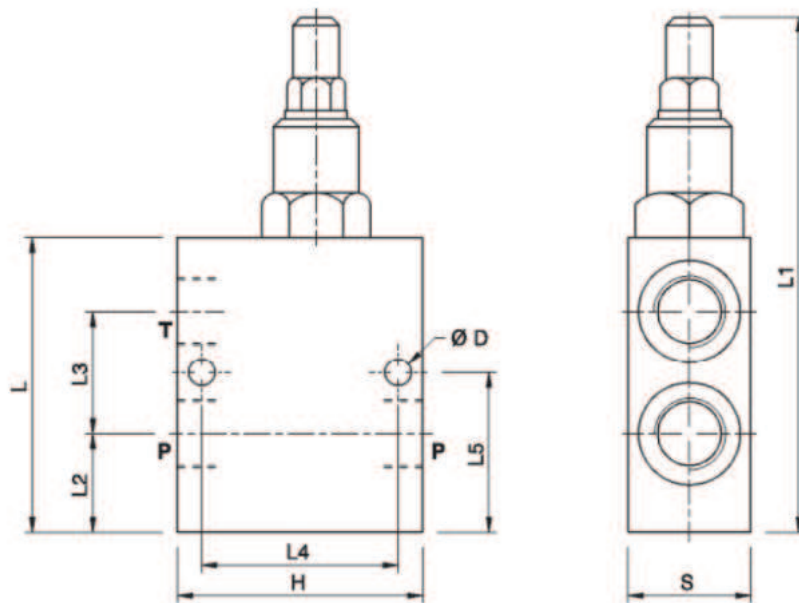
On Request

- Different setting range (see the table)
- Other setting available (CODE/T000 please specify the desired setting)

 **Performance Curve**



 **Dimensional Drawing**



 **Ordering Details**

Code	Type	P-T	ØD	L	L1	L2	L3	L4	L5	H	S	Weight
		GAS	mm	mm	mm	mm	mm	mm	mm	mm	mm	Kg
V0691/000*	VMP L D5 3/8"	G 3/8"	6.5	72	126	24	31	48	40	60	30	0.922
V0692/000*	VMP L D5 1/2"	G 1/2"	6.5	72	126	22	35	48	40	60	30	0.870
V0693/000*	VMP L D5 3/4"	G 3/4"	8.5	100	154	32	44	54	54	70	40	1.812

000*= please specify the desired setting range. See the table below.

 **SpringsTable**

Setting Range	Pressure Increase	Standard Setting
Bar	Bar/Turn	Bar
10 - 50*	7	30
20 - 100	12	75
10 - 180 standard	30	90
50 - 250	45	130
80 - 300	50	150

*For setting less than 70 Bar:Q= 12 LPM

 **Adjustment**

CODE/V	Handknob
CODE/PP	Arranged for sealing cap
CODE/P	Sealing cap

RELIEF VALVES