

1/4" IN LINE MOUNTING RELIEF VALVE



VMP L D5

Flow Upto 30 LPM
Pressure 350 Bar

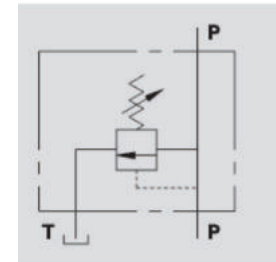


Description & Operation

The relief valve limits the maximum pressure in a circuit to the valve's setting.

When the circuit pressure reaches the setting, the valve opens and stops the circuit pressure going any higher.

Connect circuit port with pressure to P and tank port to T. Port P is reversible.



Hydraulic Symbol

Technical Data

Maximum Flow	30 LPM
Maximum Pressure	350 Bar
Body Material	Steel
Internal parts	Hardened and Ground steel
External Component treatment	Zn/Fe - standard (96h) / Zn/Ni (720h)
Oil Temperature	50 Deg. C
Fluids	Mineral based or synthetics with lubricating properties
Viscosity	30 cSt
Standard Sealing	NBR-Buna N
Filtration	20/18/15 ISO 4406 (Max. Filtration admitted)
Orientation / Mounting	Inline
Weight	See Ordering details

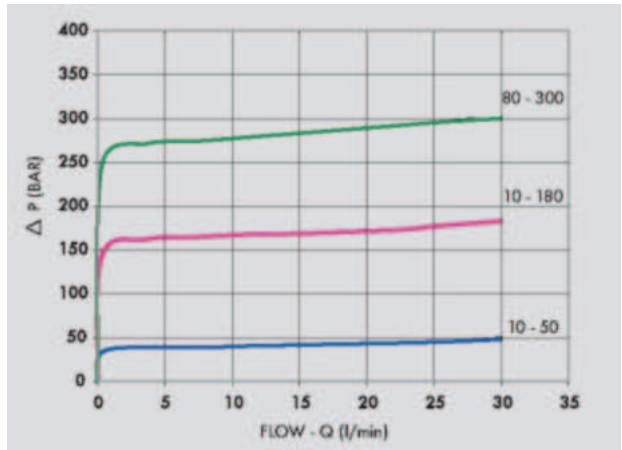
Specifications

Type	Max.Flow	Max.Presure
	LPM	Bar
VMP L D5 1/4"	30	350

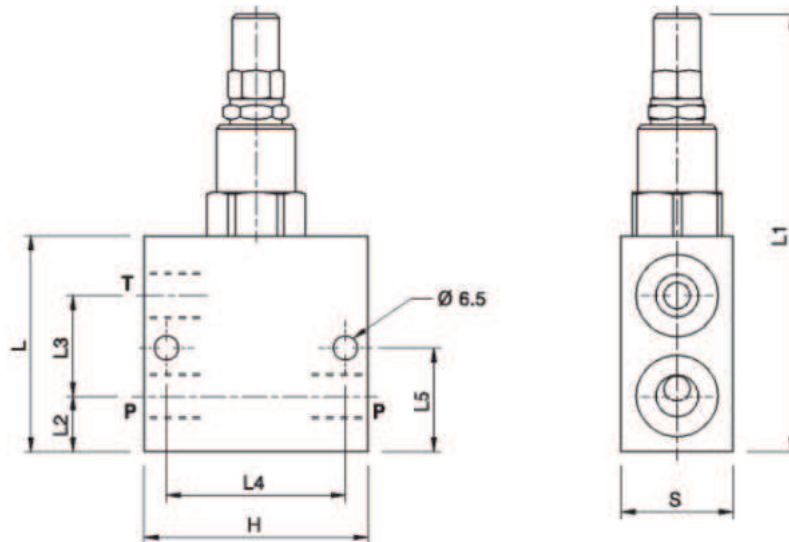
On Request

- Different setting range (see the table)
- Other setting available (CODE/T000 please specify the desired setting)

 **Performance Curve**



 **Dimensional Drawing**



 **Ordering Details**

Code	Type	P-T	L	L1	L2	L3	L4	L5	H	S	Weight
		GAS	mm	mm	mm	mm	mm	mm	mm	mm	Kg
V0688/000*	VMP L D5 1/4"	G 1/4"	58	112	15	27	48	28	60	30	0,940

 **SpringsTable**

Setting Range	Pressure Increase	Standard Setting
Bar	Bar/Turn	Bar
10 - 50*	7	30
10 - 180 standard	30	90
80 - 300	50	150

 **Adjustment**

CODE/V	Handknob
CODE/PP	Arranged for sealing cap
CODE/P	Sealing cap

*For setting less than 70 Bar: Q = 12 LPM