



RELIEF VALVE

VMP

Flow Upto 90 LPM
Pressure 350 Bar

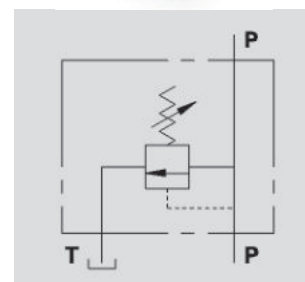


Description & Operation

The relief valve limits the maximum pressure in a circuit to the valve's setting.

When the circuit pressure reaches the setting, the valve opens and stops the circuit pressure going any higher.

Connect circuit port with pressure to P and tank port to T. Port P is reversible.



Hydraulic Symbol

Technical Data

Maximum Flow	90 LPM
Maximum Pressure	350 Bar
Body Material	Steel
Internal parts	Hardened and Ground steel
External Component treatment	Zn/Fe - standard (96h) / Zn/Ni (720h)
Oil Temperature	50 Deg. C
Fluids	Mineral based or synthetics with lubricating properties
Viscosity	30 cSt
Standard Sealing	NBR-Buna N
Filtration	20/18/15 ISO 4406 (Max. Filtration admitted)
Orientation / Mounting	Inline
Weight	See Ordering details

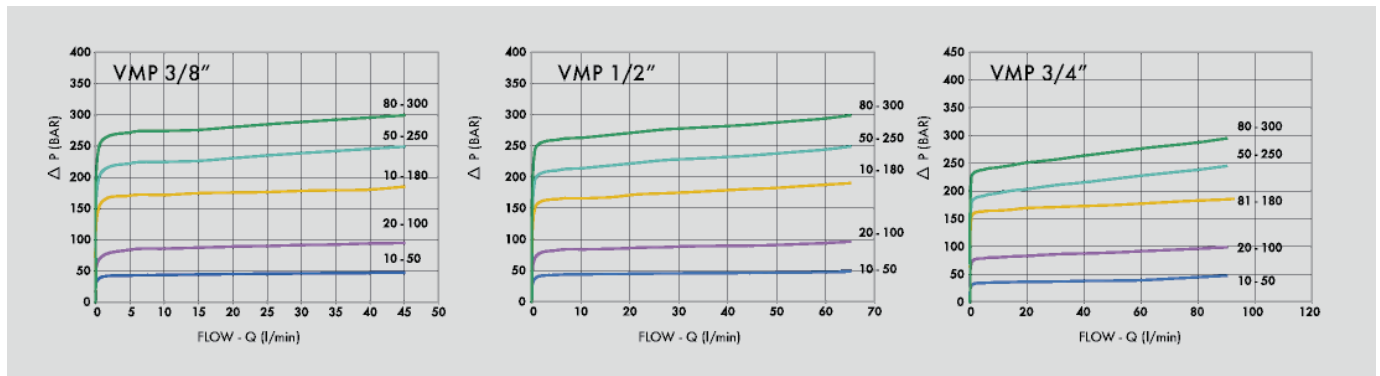
Specifications

Type	Max.Flow	Max.Pressure
	LPM	Bar
VMP 3/8"	45	350
VMP 1/2"	70	350
VMP 3/4"	90	350

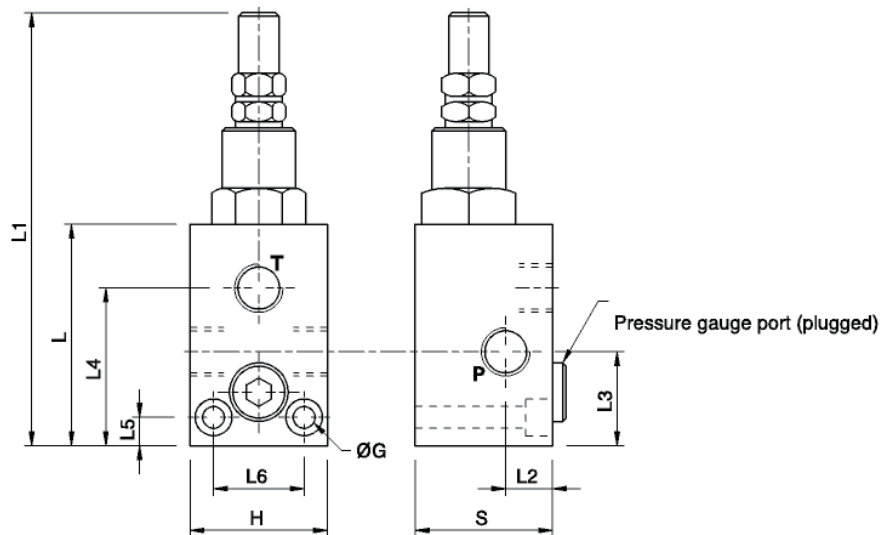
On Request

- Different setting range (see the table)
- Other setting available (CODE/T000 please specify the desired setting)

Performance Curve



Dimensional Drawing



Ordering Details

Code	Type	P-T	L	L1	L2	L3	L4	L5	L6	G	H	S	Weight
		GAS	mm	mm	mm	mm	mm	mm	mm	mm	mm	mm	Kg
V0700/000*	VMP 3/8"	G 3/8"	72	134	14	26	49.5	8.5	26	6.5	40	40	0.824
V0710/000*	VMP 1/2"	G 1/2"	77	139	17.5	29.5	54	8.5	30	6.5	45	45	1.058
V0720/000*	VMP 3/4"	G 3/4"	92	154	20	35	68	10	32	8.5	50	50	1.470

000* = please specify the desired setting range. See the table below.

SpringsTable

Setting Range	Pressure Increase	Standard Setting
Bar	Bar/Turn	Bar
10 - 50*	7	30
20 - 100	12	75
10 - 180 standard	30	90
50 - 250	45	130
80 - 300	50	150

*For setting less than 70 Bar: Q = 12 LPM

Adjustment

CODE/V	Handknob
CODE/PP	Arranged for sealing cap
CODE/P	Sealing cap

RELIEF VALVES