

LIGHT WEIGHT RELIEF VALVES



VMP L

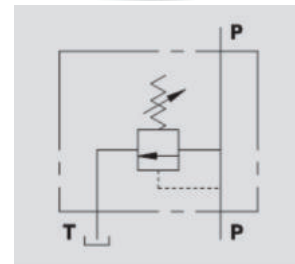
Flow Upto 40 LPM
Pressure 350 Bar

Description & Operation

The relief valve limits the maximum pressure in a circuit to the valve's setting.

When the circuit pressure reaches the setting, the valve opens and stops the circuit pressure going any higher.

Connect circuit port with pressure to P and tank port to T. Port P is reversible.



Hydraulic Symbol

Technical Data

Maximum Flow	40 LPM
Maximum Pressure	350 Bar
Body Material	Steel
Internal parts	Hardened and Ground steel
External Component treatment	Zn/Fe - standard (96h) / Zn/Ni (720h)
Oil Temperature	50 Deg. C
Fluids	Mineral based or synthetics with lubricating properties
Viscosity	30 cSt
Standard Sealing	NBR-Buna N
Filtration	20/18/15 ISO 4406 (Max. Filtration admitted)
Orientation / Mounting	Inline
Weight	See Ordering details

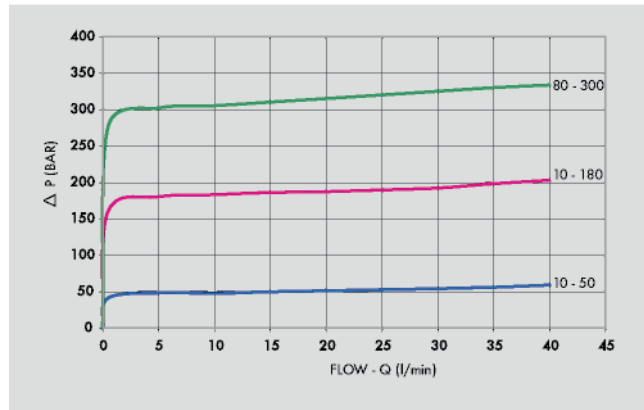
Specifications

Type	Max.Flow	Max.Pressure
	LPM	Bar
VMP 1/4" L	30	350
VMP 3/8" L	40	350

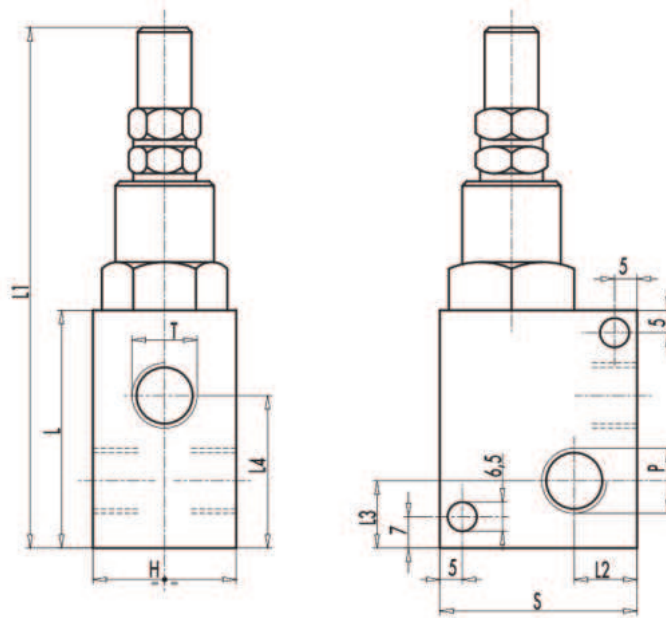
On Request

- Different setting range (see the table)
- Other setting available (CODE/T000 please specify the desired setting)

 **Performance Curve**



 **Dimensional Drawing**



 **Ordering Details**

Code	Type	P-T	L	L1	L2	L3	L4	H	S	Weight
		GAS	mm	mm	mm	mm	mm	mm	mm	Kg
R-V0689/000*	VMP 1/4" L	G1/4"	52	114	12	13	34	30	40	0.474
R-V0690/000*	VMP 3/8" L	G3/8"	52	117	12	15	35.5	30	40	0.472

000*= please specify the desired setting range. See the table below.

 **SpringsTable**

Setting Range	Pressure Increase	Standard Setting
Bar	Bar/Turn	Bar
10 - 50*	7	30
10 - 180 standard	30	90
80 - 300	50	150

*For setting less than 70 Bar:Q= 12 LPM

 **Adjustment**

CODE/V	Handknob
CODE/PP	Arranged for sealing cap
CODE/P	Sealing cap