

CARTRIDGE RELIEF VALVE 120 LPM



VMPC 120

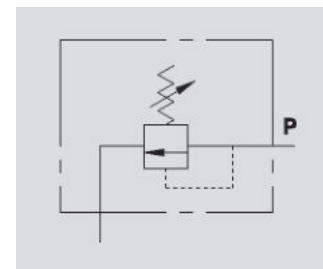
Flow Upto 160 LPM
Pressure 400 Bar

Description & Operation

The relief valve limits the maximum pressure in a circuit to the valve's setting.

When the circuit pressure reaches the setting, the valve opens and stops the circuit pressure going any higher.

Fit the valve in the appropriate cavity.



Hydraulic Symbol

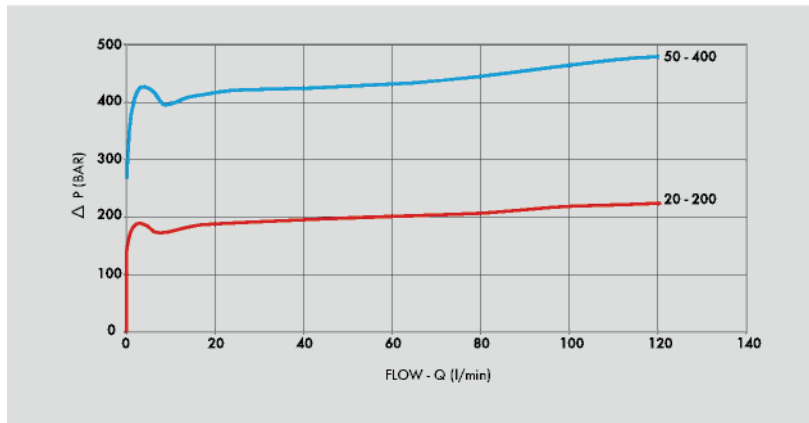
Technical Data

Maximum Flow	160 LPM
Maximum Pressure	400 Bar
Body Material	Steel
Internal parts	Hardened and Ground steel
External Component treatment	Zn/Fe - standard (96h) / Zn/Ni (720h)
Oil Temperature	50 Deg. C
Fluids	Mineral based or synthetics with lubricating properties
Viscosity	30 cSt
Standard Sealing	NBR-Buna N
Filtration	20/18/15 ISO 4406 (Max. Filtration admitted)
Orientation / Mounting	Inline
Weight	See Ordering details

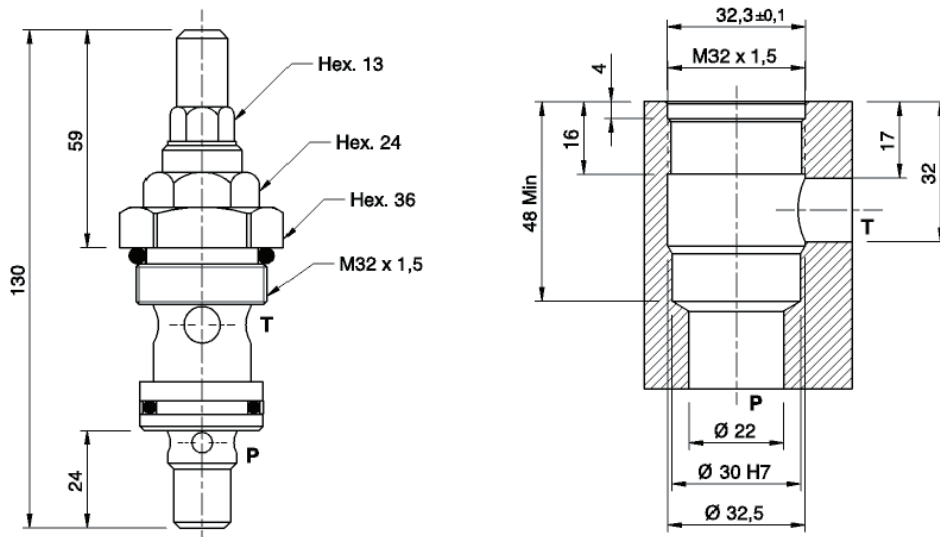
Specifications

Type	Max.Flow	Pressure Range
	LPM	Bar
VMPC 120 20-200 BAR	160	20-200
VMPC 120 50-400 BAR	160	50-400

 **Performance Curve**



 **Dimensional Drawing**



 **Ordering Details**

Code	Type	M	Weight
		MEP	Kg
R-VC1200/200	VMPC 120 20-200 BAR	M32X1.5	0.350
R-VC1200/400	VMPC 120 50-400 BAR	M32X1.5	0.350

000* = please specify the desired setting range. See the table below.

 **Adjustment**

CODE/V	Handknob
CODE/PP	Arranged for sealing cap
CODE/P	Sealing cap

RELIEF VALVES